

# THE 1944 DELPHIAN





THE 1944  
DELPHIAN

*Published by*  
THE SENIOR CLASS  
NEW PHILADELPHIA  
HIGH SCHOOL  
NEW PHILADELPHIA, OHIO



*Dale Dunn \*\*\* Business Manager*

*Jane Patrick \*\*\* Editor*



# DEDICATION



In this period of conflict and disorder, the Delphian Staff feels that it is fitting and proper to pay tribute to the men and women who are so gallantly defending our rights against our enemies. ☆☆ It is, therefore, with great pride that we dedicate this book to the students and faculty of our school who have made sacrifices to uphold the cause of liberty wherever it is being threatened.





"Majestic monarch of  
the sky  
The sign of hope and  
triumph high."  
We pause to salute you!

"I pledge allegiance to the Flag  
of the United States of America  
and to the Republic for which it  
stands, one Nation indivisible,  
with liberty and justice for all."



# FOREWORD



This year in publishing the Delphian, we have tried to include the things which you would want to remember. If in a few years you look back through your Delphian and are able to recall happy memories of your days in Senior High, we will, in a small way, have attained our purpose. ☆☆☆

# C O N T E N T S



- DEDICATION
- ADMINISTRATION DIVISION
- CLASSES DIVISION
- ACTIVITIES DIVISION
- ATHLETICS DIVISION

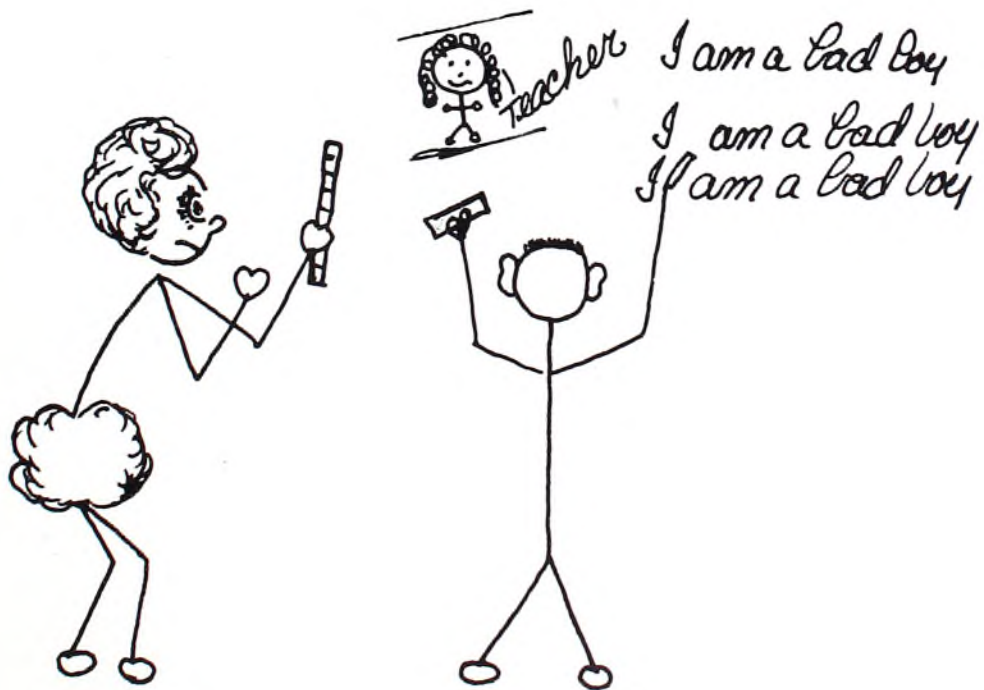
# ADMINISTRATION

○

○

○

○





JOHN W. EVANS, *Superintendent*  
A. B., Rio Grande College  
M. A., Ohio State University



THELMA E. BUSBY  
Secretary to the Superintendent

J. B. RUDY, *Principal*  
B. S. in Ed., Wooster College  
M. A., Ohio State University



EILEEN GREEN  
Secretary to the Principal

# School Board



Left to right—Mr. Frazier, Mr. Buchanan, Mr. Lukens, Mr. Ritter, Mr. Williams

## Officers

W. V. BUCHANAN	-	-	-	President
J. D. LUKENS	-	-	-	Vice President
W. M. FRAZIER	-	-	-	Clerk-Treasurer



## Committees

Education  
J. D. LUKENS  
W. R. RITTER

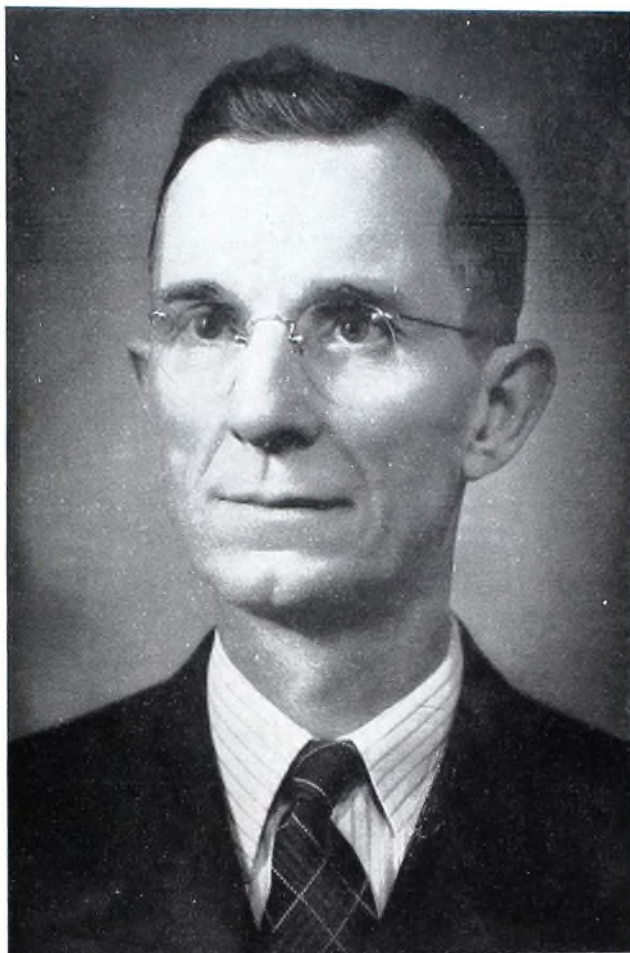
Finance  
W. R. RITTER  
W. M. FRAZIER

Buildings and Grounds  
G. H. WILLIAMS  
J. D. LUKENS

Physical Education  
G. H. WILLIAMS                      W. M. FRAZIER



F. B. FUERST  
Attendance Officer



R. S. SMITH  
Superintendent of Buildings  
and Grounds



HARRY NUSSBAUM  
B. C. HOLLINGSWORTH  
Custodians

## *The Languages*



MAE BAKER  
A. B., Otterbein College  
M. A., Columbia University  
English 11 and 12A



FLORENCE BEABER  
Ph. B., Wooster College  
Ohio State University  
English 10 and 12B



SUE E. FELTON  
Ph. B., Wooster College  
Boettingerstudienhaus,  
Berlin  
German and  
Plane Geometry



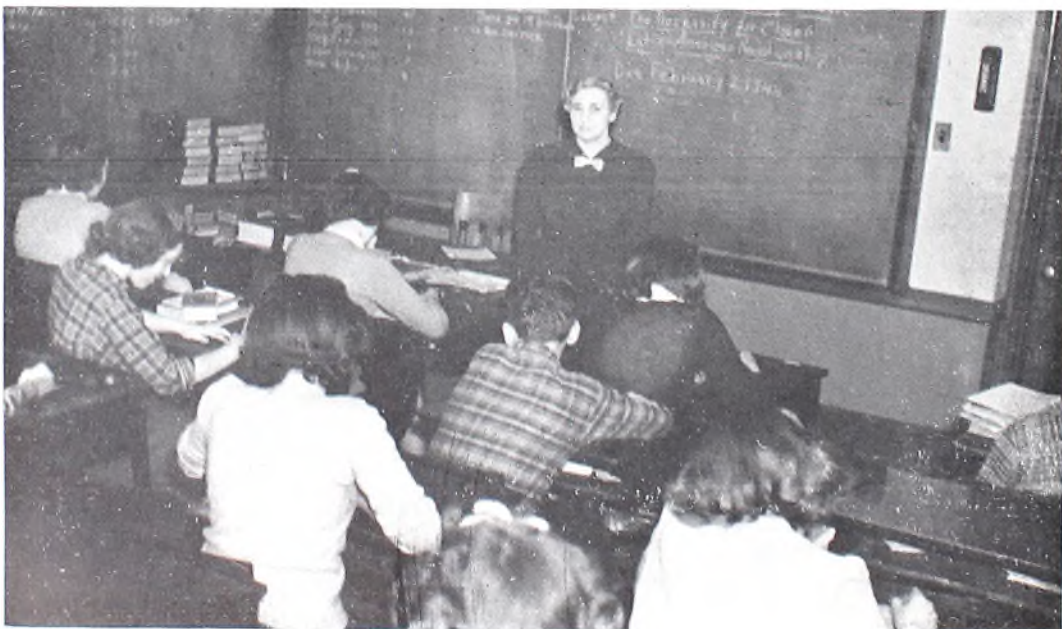
STELLA RUTLEDGE  
A. B., Ohio Wesleyan  
University  
Latin and English 10



PAULINE SHUMAKER  
A. B., Ohio Wesleyan  
University  
M. A., Columbia University  
English 11 and History 11



BERNICE WICKS  
A. B., Hiram College  
M. A., Western Reserve  
University  
Spanish and English 10



# *Social Studies*



H. S. CARROLL  
B. S. in Ed., Miami  
University; M. A., Ohio  
State University  
Civics, Economics, and  
Sociology



RUSSELL A. BENDER  
A. B., Wooster College  
B. S. in Ed., Kent State  
University; M. A., Ohio  
State University  
History 10, Commercial Law  
and Sociology



CARL E. WILLIAMS  
A. B. and M. A.,  
Ohio University  
Ohio State University  
Harvard University  
History 11



HELEN WARNER  
A. B., Muskingum College  
M. A., Northwestern  
University  
History and Speech





LEILA HELMICK  
A. B., Wittenberg College  
Chemistry and Physics

## Technical Sciences



HUGH M. HOWEY  
B. S., Wooster College  
M. of Ed., University of  
Pittsburgh  
Mathematics and  
Aeronautics



FRANCES MYER  
B. E. and B. A., University  
of Colorado  
Newberry College  
M. A., University of  
Pittsburgh  
Business Arithmetic and  
Algebra I



HERBERT STOUGHTON  
B. S., Otterbein College  
Ohio State University  
Biology and Senior Science



EVELYN D. FONDELL

B. S., University of  
Minnesota  
Gregg College; College of  
Puget Sound  
Typing II, Shorthand I  
and II



DELBERT C. PHILLIPS

B. S. in Ed., Ohio  
University  
Bookkeeping II, Business  
Organization, Salesmanship,  
and Typing I



VERDEAN ARMSTRONG

B. S. in Ed., Kent State  
University  
Ohio State University  
Canton Actual Business College  
Typing I and Bookkeeping I



DEO G. STEFFEN  
B. S. in Ed., Bliss College;  
Cincinnati University;  
M. A., Kent State  
University  
Bookkeeping II, Typing I,  
Business Organization  
Faculty Athletic Manager



CLARK GLOVER  
A. B., Ohio University  
A. M., Ohio State  
University  
Industrial Arts

## *The Vocational Arts*



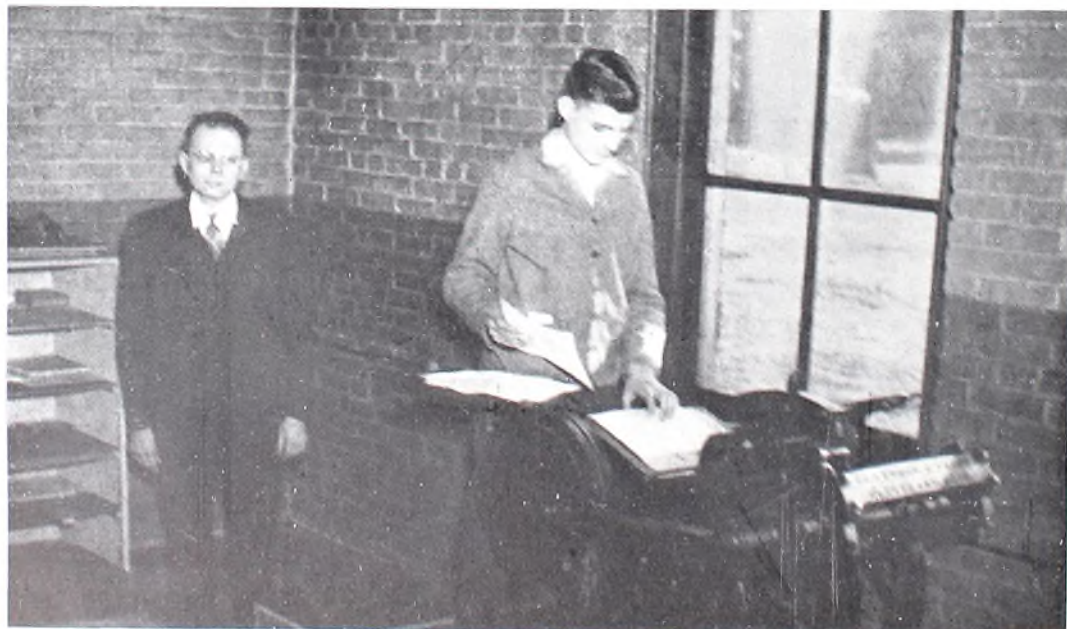
VIOLA KAUTZ  
B. S. and M. A., Ohio State  
University  
Home Economics



PEARSON PUGH  
B. S. in Agr., Ohio State  
University  
Industrial Arts



HAZEL RENNELS  
B. S. in Ed., Kent State  
University  
Home Economics





LOIS SHAW  
B. S. in Music Ed.  
Cincinnati Conservatory of  
Music  
University of Cincinnati  
Vocal Music

*Special Subjects*



BEULAH M. BARTON  
A. B., Western College  
M. A., Columbia University  
Health and Physical  
Education

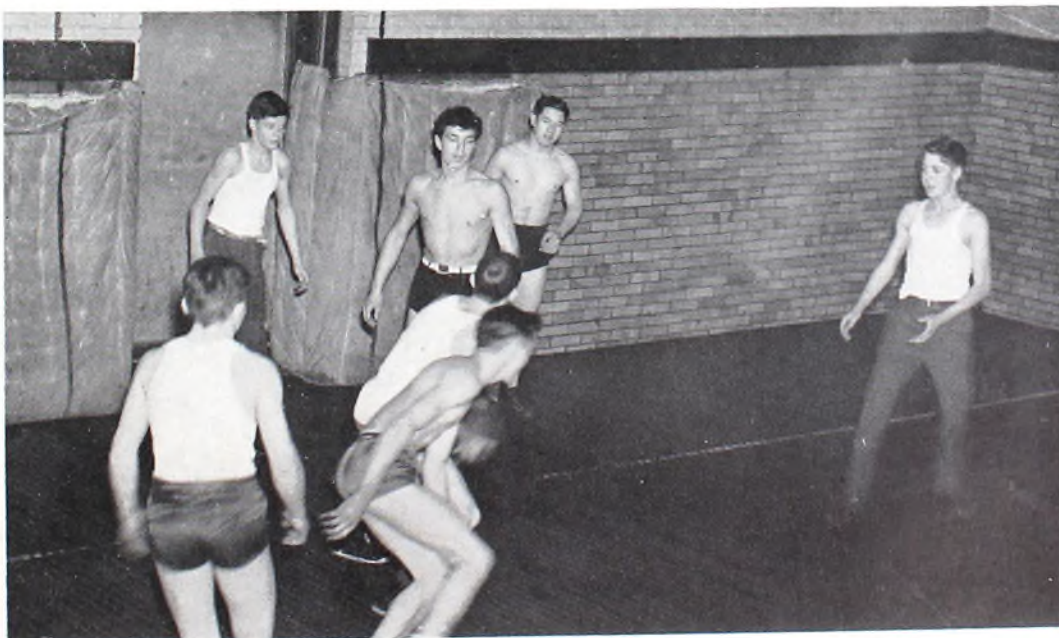
W. CALVIN JOLLY  
B. P. S. M., Westminster  
College  
Carnegie Tech  
Director of Instrumental  
Music



PAUL HOERNEMAN  
A. B., Heidelberg College  
Football and Basketball  
Coach; Health and Physical  
Education



JEAN BOWDITCH  
A. B., West Liberty State  
College  
Librarian





# CLASSES

○

○

○

○



Soph.



Jr.



Sr.



Tom Orr      Andrew Cheslock      Mary Jane Bair

# CLASS *of* 1944

## *Officers*

ANDREW CHESLOCK ----- *President*  
TOM ORR ----- *Vice President*  
MARY JANE BAIR ----- *Secretary-Treasurer*  
MISS HELMICK, MR. WILLIAMS, *Advisers*

## *Committee Chairmen*

Mary Buchanan ----- Banquet Committee  
Neal Burke ----- Decorating Committee  
George Reesman ----- Program Committee  
Martha McNeely ----- Invitation Committee  
Earl Paulus ----- Play Reading Committee

*Flower*—Gardenia  
*Motto*—Libertas per Veritatem  
*Colors*—Kelly Green and White

**JAMES M. ALLMAN—General**

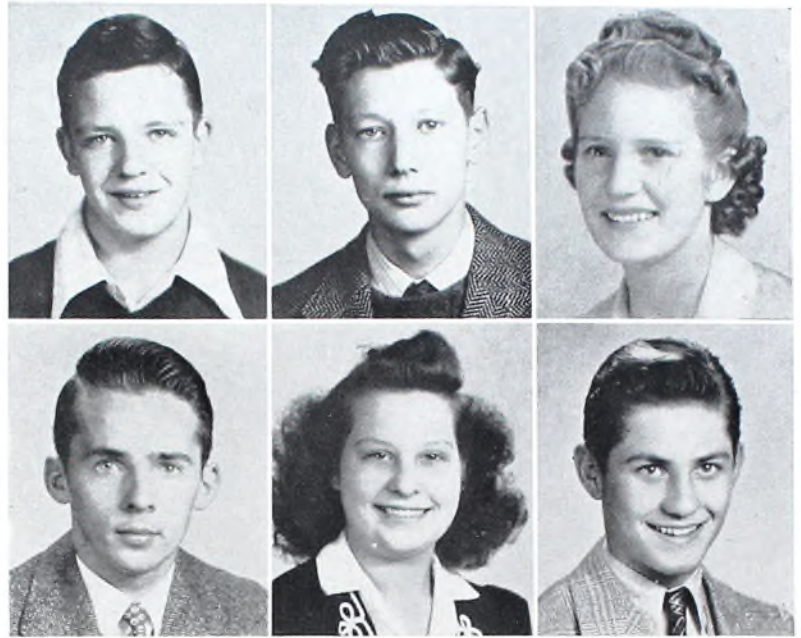
"True merit, like a river,  
the deeper it is the less noise it makes."

**EUGENE WALLACE ANDERSON—Commercial**

"I never trouble trouble 'till  
trouble troubles me."  
Industrial Arts Club—12; Intramurals—11.

**MARTHA EILEEN ANGEL**

"My heart's not like a toy,  
but has room for every joy."  
Operetta—10; District Scholarship Test in  
English 11, 17th in district; G. O. B.S.—11;  
Chorus—10, 11; Honor Club—10.

**MARY JANE BAIR—Commercial**

"Cheerfulness and good-will  
make labor light."  
Band—10, 11, 12; Girl Reserves—10, 11,  
12; Honor Club—10, 11, 12; Commercial  
Club—11; De'phian typist—12; Class of-  
ficer—12; G. A. A.—12.

**BYRON DAVID BALL—General**

"Sigh no more, ladies, sigh no more,  
men were deceivers ever."  
Color Guard—12; Class play—11.

**VERA LEE BATES—Commercial**

"Thy modesty is a candle to thy merit."

**JAMES W. AVON—Industrial Arts**

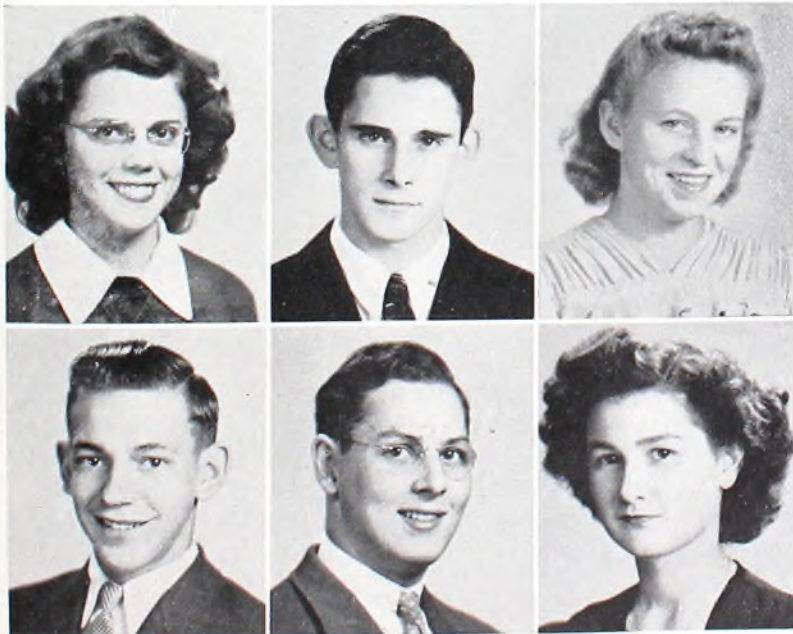
"Every man is the architect  
of his own fortune."  
Industrial Arts Club—12.

**BONNIE JEAN BAILEY—Academic**

"Nothing is impossible to a willing heart."  
Chorus—11, 12; Band—10, 11; Spanish  
Club—12; Nephilicos—12.

**DALE BAIR—Commercial**

"Of friends he has many,  
Of foes—has he any?"

**WILLIAM BEABER—Commercial**

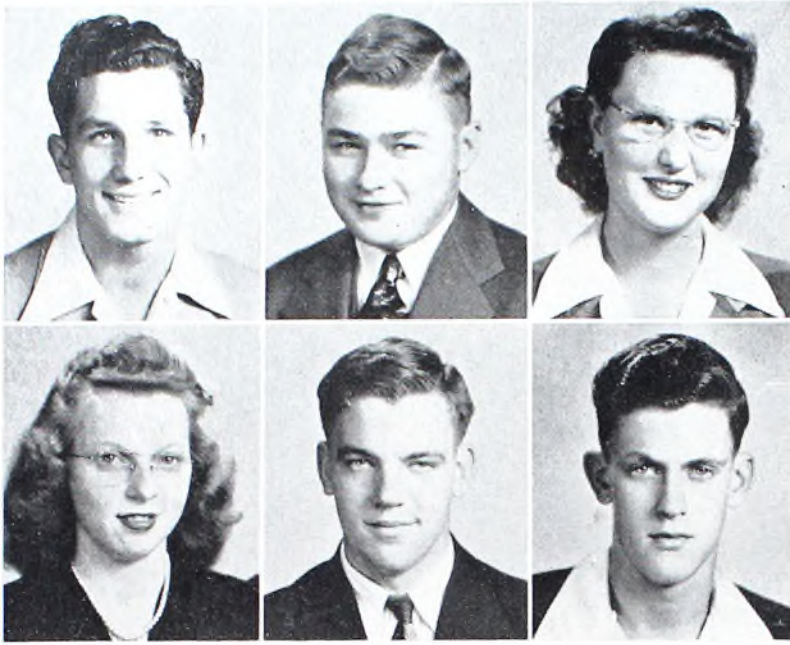
"No man is happy that does  
think himself so."  
Football—12.

**HERMAN BERGMAN—Academic**

"My mind to me a kingdom is."  
Debate—10, 11, 12; German Club—11, 12;  
Latin Club—11, 12; Junior Classical  
League—11, 12; Honor Club—10, 11, 12;  
Prom Committee—11; Class play—11.

**DORIS EDNA BROWN—Commercial**

"My tongue within my lips I reign,  
For who talks much talks in vain."  
Girl Reserves—10, 11, 12; Industrial Arts  
Club—12; Commercial Club—11.



KENNETH E. BROWN—*Commercial*

"From the crown of his head to the sole of his foot, he is all birth."

JUNIOR BROWNING—*Academic*

"I shall ne'er be ware of my own wit wit,  
Till I break my shins against it."  
Latin Club and Junior Classical League—  
11, 12.

MARY ELIZABETH BUCHANAN—*Academic*

"Where thoughts serenely express,  
How pure, how dear, their dwelling place."  
Chorus—10; Honor Club—11; Latin Club  
and Junior Classical League—11, 12; Girl  
Reserves—10, 11, 12; G. R. Cabinet—10,  
11; Band—10, 11, 12; Orchestra—10, 11,  
12; Assembly Committee—12.

THELMA BUCHER—*Commercial*

"She smiled and the shadows departed."  
Girl Reserves—10; Chorus—10, 12; Com-  
mercial Club—11; Industrial Arts Club—12

NEAL BURKE—*Academic*

"I exist as I am,  
'Tis enough for any man."  
Basketball—10, 11, 12; Honor Club—10,  
11, 12; Delphian Staff—11; Central News  
—11, 12; Hi-Y—11, 12; German Club—11,  
12; Football—12.

HOWARD BYERS—*Commercial*

"Courage is always greatest  
when blended with meekness."  
Industrial Arts Club—12.

JEANNE CAPLES—*Commercial*

"Gentle of speech, beneficent of mind."

DORIS CARPENTER—*Commercial*

"Faith, like light, should ever  
be simple and unbending."  
Girl Reserves—10, 11; Commercial Club—  
11; Industrial Arts Club—12.

RICHARD CASPER—*Commercial*

"The apparel oft proclaims the man!"  
Industrial Arts Club—12.

JAMES J. CHERCONY—*Academic*

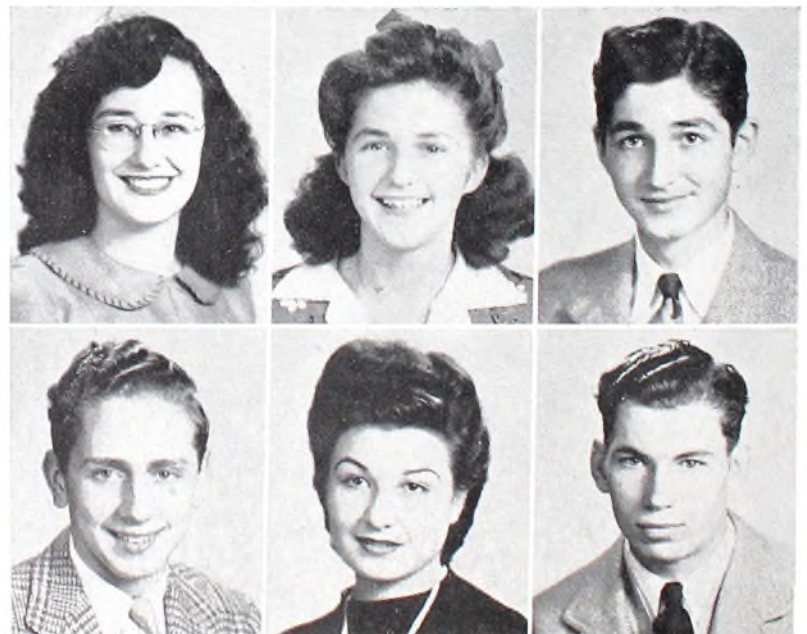
"Happy the man and happy he alone."  
Hi-Y—12; German Club—11, 12.

MARY T. CIHON—*General*

"A heart with room for every joy."  
German Club—11, 12.

ANDREW CHESLOCK—*Industrial Arts*

"After I have named the man,  
I need say no more."  
Industrial Arts Club—12; Football—12;  
Class president—12.



GERALD R. CLARK—*Industrial Arts*

"Worry and I have never met;  
For no man will I ever fret."  
Industrial Arts Club—12.

JUANITA COLLAR—*Commercial*

"And that smile like sunshine dart,  
Into many a sunless heart."  
Industrial Arts Club—12.

ROBERT BURTON COPE—*Academic*

"For even though vanquished, he  
could argue still."  
Class play—11; Intramurals—11; Latin  
Club and Junior Classical League—11, 12.

WILLIAM DUNCAN—*Industrial Arts*

"Undisturbed, he pursued the quiet tenor  
of his way."

DALE DUNN—*Academic*

"I am satisfied—I see, dance, laugh,  
and sing."  
Basketball Manager—10; Central News—  
10, 11; Class play—11; Chorus—10, 11,  
12; Hi-Y—10, 11, 12; German Club—11,  
12; Delphian Staff—11, 12; Nephilicos—  
12; Assembly Committee—12.

MARJORY JUNE EDIE—*Academic*

"A dancing shape, an image gay  
To haunt, to startle, and waylay."  
Chorus—10, 11, 12; Girl Reserves—12;  
Spanish Club—12; Nephilicos—12.

JAYNE CRITES—*Commercial*

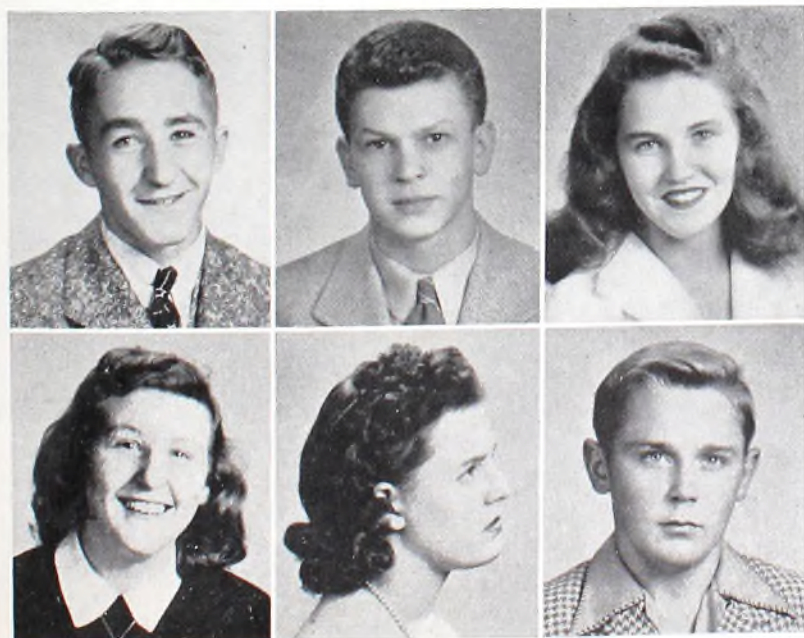
"A well-disposed nature  
Joined with a lovely feature."  
Girl Reserves—11; Class play—11; Indus-  
trial Arts Club—12.

MARY DESSECKER—*General*

"Don't be too serious!  
Take life easy and live long."  
Cheerleader—10, 11, 12; Chorus—10, 11,  
12; Operetta—11; Invitation Committee—  
12; Girl Reserves—12.

BETTY DUDLEY—*Commercial*

"That her fair form may stand and shine,  
Make bright our days and light our dreams."  
Chorus—11, 12; Industrial Arts Club—12.

RITA ENDRES—*Commercial*

"Let friendship's accents cheer our  
doubtful way."

PHYLLIS JEAN ENGLER—*Commercial*

"True as the needle to the pole,  
Or as the sun to the dial."  
German Club—12.

GAIL FAIT—*General*

"The world was made for fun and frolic."

MARY DEE FISCHIO—*Commercial*

"A pleasing countenance is a silent commendation."

Girl Reserves—10; Chorus—10; G. O. B. S.—11; Central News typist—12.

EARL FISHER—*General*

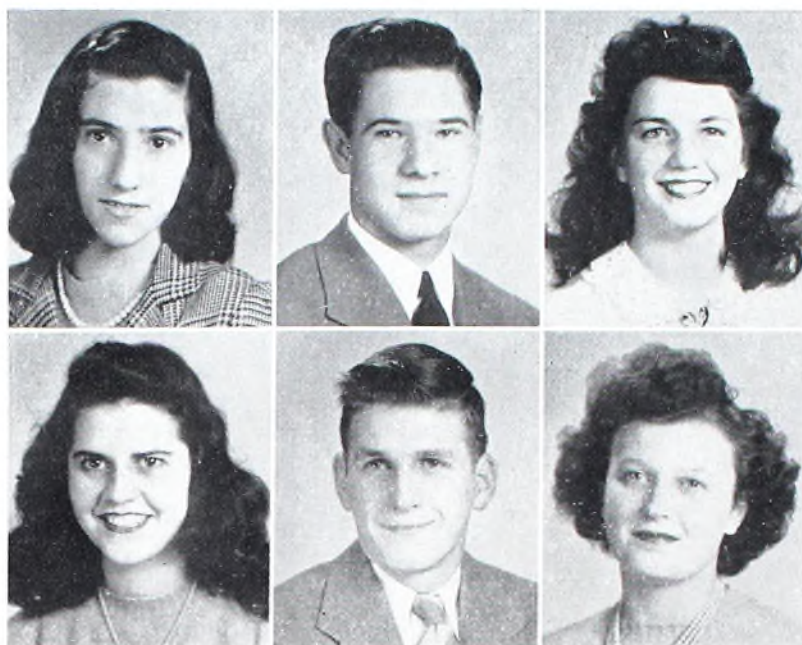
"Imagination is the ruling power of his brain."

Band—10, 11, 12; Dance Band—11, 12; Honor Club—12.

VIRGINIA FISHER—*Commercial*

"Bright as the sun her eyes the gazers strike, And like the sun, they shine on all alike."

Girl Reserves—10; G. O. B. S.—11; Industrial Arts Club—12.



MARY GARNER—*Commercial*

"Soft smiles by human kindness bred."

Girl Reserves—10, 11, 12; Chorus—10, 11, 12; Commercial Club—11; Nephilicos—12.

PAUL D. GIBBS—*General*

"A kind and gentle heart he had, To comfort friends and foes."

SARA GRAFF—*Academic*

"In youth and beauty wisdom is but rare."

Chorus—10, 12; Honor Club—10, 11, 12; Latin Club and Junior Classical League—11, 12; G. O. B. S.—11; Girl Reserves—10, 11, 12; G. R. Cabinet—11, 12; Delphian Staff—11, 12; G. A. A.—12; G. R. Chorus—12; Nephilicos—12; Candy Stand—12.

JANE FOWLER—*General*

"Whatever is popular deserves attention."

Band—10, 11, 12; Orchestra—10, 11, 12; Girl Reserves—10, 11, 12; Commercial Club—11; G. A. A.—12.

JAMES FREDERICK—*General*

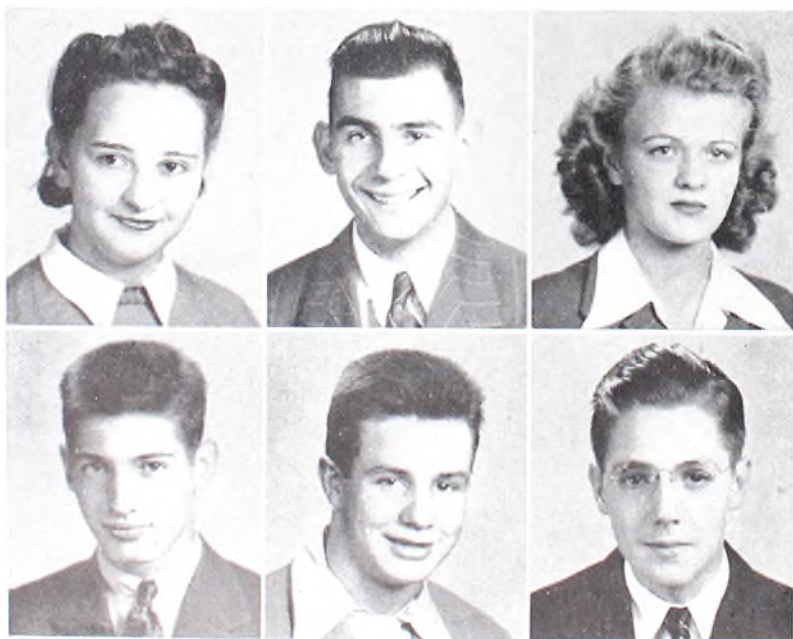
"None but himself can be his parallel."

Intramurals—11; Hi-Y—11, 12; German Club—11, 12.

JEANNE FRITCHE—*Academic*

"Common sense in an uncommon degree—"

Orchestra—10, 11, 12; Chorus—10, 12; Girl Reserves—10, 11, 12; G. R. Cabinet—11, 12; Honor Club—10, 11, 12; Spanish Club—12; Assembly Committee—12.



JOSEPH HARVEY GRIBBLE—

*Industrial Arts*

"His modesty is exceeded only by his worth." Football—11, 12; Industrial Arts Club—12.

GEORGE GRUBB—*General*

"—And where 'er

He met a stranger, there he left a friend."

Honor Club—10; Band—10, 11; German Club—11, 12.

JACK GUNTHER—*General*

"I ain't denyin' that women are foolish, God made 'em so to match the men."

Band—10; Debate Squad—11; Class play—11; Chorus—12; Nephilicos—12; Industrial Arts Club—12.



BETTY HALTER—*General*

"What happy things are youth,  
and love, and sunshine."

Orchestra—10; Saxophone Quartet—10,  
11; Commercial Club—11; Band—10, 11,  
12; Girl Reserves—10, 11, 12; G. A. A.—  
12.

HOMER HARRIS—*General*

"Generosity should always be accompanied  
by a dash of humor."

German Club—11, 12; Football—12.

CHARLES HARRIS—*Industrial Arts*

"An honest man, close-buttoned  
to the chin, broadcloth without,  
and a warm heart within."

Industrial Arts Club—12.

GERALD HARSTINE—*Industrial Arts*

"As carefree as a lark in the sky."

Basketball Manager 10, 11; Color Guard—  
11; Drum Major—12; Industrial Arts Club  
—12.

JOHN HARSTINE—*Academic*

"Thou living ray of intellectual fire."

German Club—11, 12; Honor Club—10,  
11, 12; Chemistry Lab Assistant—12; Dis-  
trict Scholarship Test in American History,  
2nd place, 4th in State for all schools—11;  
Honorable mention in Westinghouse Science  
Talent Search—12.

WILLIAM JUNIOR HEWITT—

*Commercial*

"Whose high endeavors are an inward light,  
that makes the path before him always  
bright."

Industrial Arts Club—12.

VERNON INDERMILL—*Academic*

"Then he will talk—

Ye gods! how he will talk!"

Chorus—10, 11; District Scholarship Test  
in Geometry—10; Class play—11; Hi-Y—  
12.

JUNE JACQUETTE—*Academic*

"Her hair was not more sunny  
than her heart."

Girl Reserves—10, 11, 12; Chorus—10, 11;  
Spanish Club—11, 12.

MARILYN J. JENKINS—*Commercial*

"Those lovely lamps, those  
windows of the soul."

Girl Reserves—11.

JANICE RUTH HILLER—*Commercial*

"The virtue of her lively looks  
Exce's the precious stone."

Orchestra—10, 11, 12; Commercial Club—  
11; Central News typist—12.

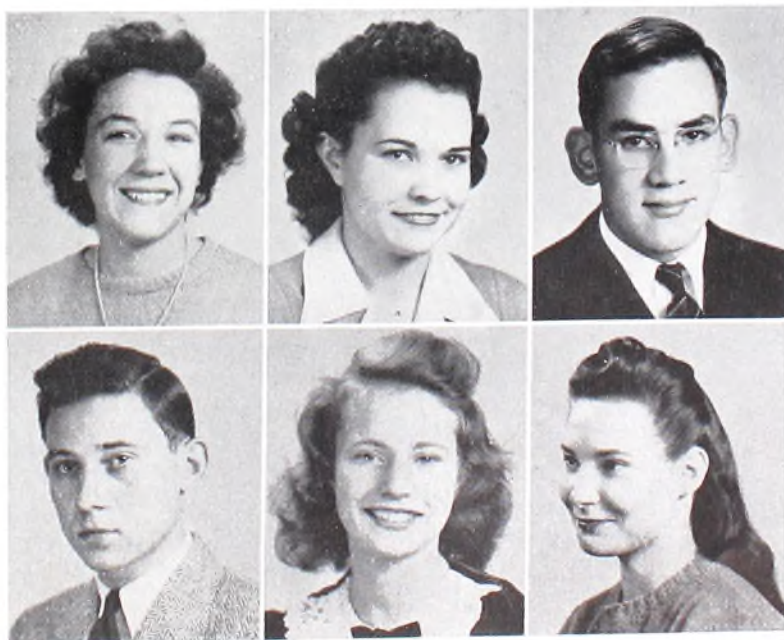
NINA HINSON—*Commercial*

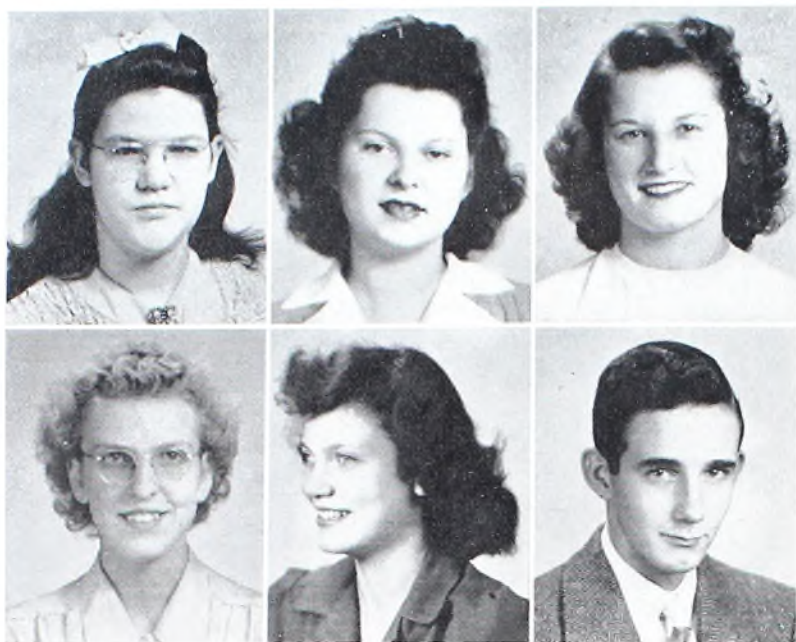
"Beauty is its own excuse for being."  
Girl Reserves—12.

WALTER H. HOTHEM—*General*

"Tis he whose law is reason; who depends  
upon that law as on the best of friends."

Decorating Committee—11; District Schol-  
arship Test in American History, honorable  
mention—11; Industrial Arts Club—12.





ARLENE KROPP—*Commercial*

"And her modest answer and graceful air  
Show her wise, and good as she is fair."

DORIS LUCILLE LARKIN—*Academic*

"There is wisdom in a merry heart  
What'er the world may say!"  
Girl Reserves—10, 11, 12; Chorus—10, 11;  
Latin Club and Junior Classical League—  
11, 12; Operetta—11; Candy Stand—12.

NEIL LAUGHLIN—*Industrial Arts*

"I am the master of my fate;  
I am the captain of my soul."  
Intramurals—11; Industrial Arts Club—  
12.

KATHRYN M. MARSH—*Academic*

"Her silver voice  
Is the rich music of a slumberbird."  
Junior Jamboree—10, Operetta—10, 11;  
Class play committee—11; Cheerleader—  
10, 11, 12; Chorus—10, 11, 12; G. R.  
Chorus—11, 12; Nephillicos—12; Girl  
Reserves—10, 11, 12; G. R. Cabinet—12;  
Spanish Club—12.

GLEN MARSHALL—*General*

"... Like bright metal on sullen ground."  
Intramural basketball—11; Industrial Arts  
Club—12.

JACK MASON—*Commercial*

"On their own merits, modest men  
are dumb."  
Basketball—10, 11; Football—12; Indus-  
trial Arts Club—12; Hi-Y—12.

ETHEL MAE KERPER—*Commercial*  
"A soft tongue never speaks hard words."  
Girl Reserves—10, 11, 12.

LOIS E. KINSEY—*Commercial*

"... And her voice is sweet  
with deep mysterious accords."  
Operetta—10, 11; Chorus—10, 11, 12; Girl  
Reserves—11, 12; Dance Band—12.

ANN KIRK—*Academic*

"A stunning up-to-date miss is she,  
Chuckfull of wit and gaiety."  
Girl Reserves—10, 11, 12; G. R. Cabinet—  
1, 12; Cheerleader—10, 11, 12; Chorus—  
10, 11, 12; G. R. Chorus—11, 12; Class  
Play—11; Spanish Club—12; Nephillicos—  
12.

ELEANOR J. LIGHTELL—*General*

"Her native grace, so void of art."  
Girl Reserves—11, 12; G. O. B. S.—11;  
Industrial Arts Club—12.

RICHARD LEE LINDSAY—*Academic*

"A little nonsense now and then  
Is relished by the wisest men."  
Soprano quartet—10; Band—10, 11, 12;  
Dance Band—10, 11, 12; Honor Club—10,  
11, 12; German Club—11, 12; Senior Jam-  
boree Committee—12; Assembly Commit-  
tee—12.

ELNORA M. LORENZ—*Academic*

"She was ever fair and never proud,  
Had tongue at will, yet never was loud."  
Chorus—10, 11; Operetta—11; Class Play  
—11; Girl Reserves—10, 11, 12; Central  
News typist—12; Spanish Club—12.



DON MATHIAS—*Commercial*

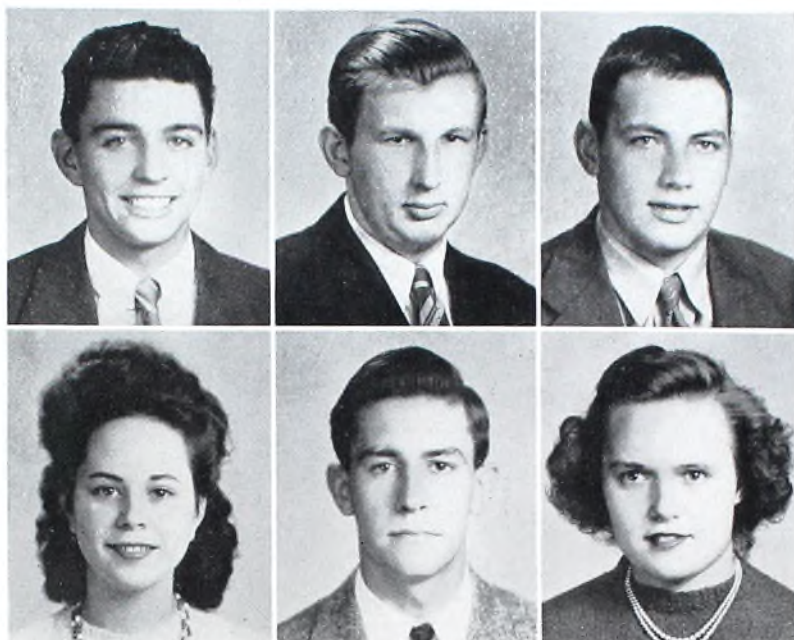
"Like some young cypress,  
tall and dark and straight."  
Industrial Arts Club—12.

DAVID MAURER—*General*

"Keen sense and common sense,  
and no room for nonsense."  
Chorus—10; Honor Club—12; Banquet  
Committee—12.

EUGENE MAURER—*General*

"Let every man mind his own business."

MARTHA McNEELY—*Academic*

"She that bears a noble mind."  
Band—10; Orchestra—10; Second in State  
for brass quintet ensemble—10; German  
Club—11, 12; Honor Club—11, 12.

## MARGARET ELLEN MEISSNER—

*Commercial*

"Smiles are smiles only when  
the heart pulls the wire."  
Band—10, 11, 12; Candy Stand—11, 12;  
Girl Reserves—12; Delphian typist—12; G.  
A. A.—12.

JOE MILIUS—*General*

"What should men do but be merry?  
Why all this toil and trouble?"

EVELYN MAY—*General*

"Beauty is the bait which . . .  
doth men allure."

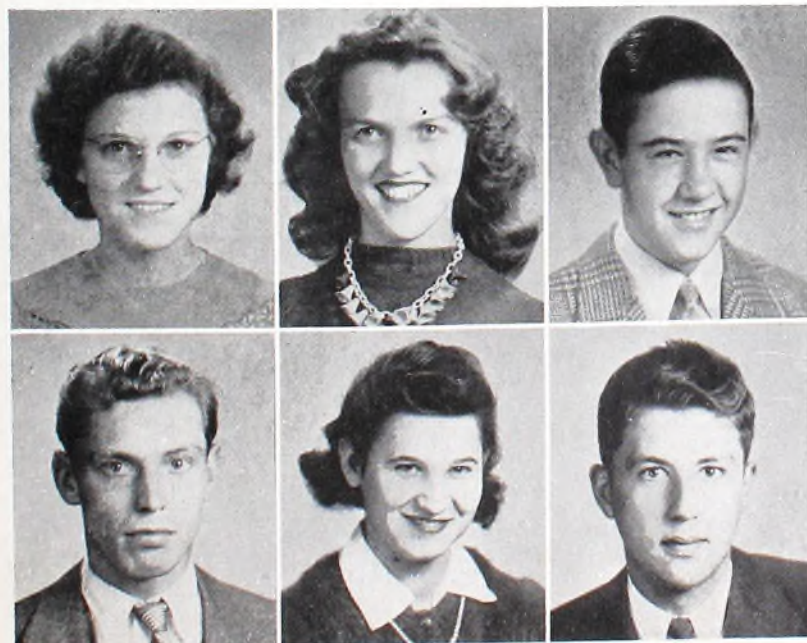
## ROBERT GEORGE McGLONE—

*General*

"I am that merry wanderer of the night."  
Basketball—10; Football—10, 11; Hi-Y—  
11, 12; Stage Crew—12.

MARY McINTOSH—*Academic*

"With a heart like a feather,  
a soul full of mirth."  
Girl Reserves—10, 11, 12; Latin Club and  
Junior Classical League—11; German Club  
11, 12.

PAUL MILLER—*General*

"And panting time toiled after him in vain."  
Football—12.

LILAH MYERS—*Commercial*

"She doth little kindnesses which most  
leave undone or despise."  
Girl Reserves—10; Commercial Club—11;  
Industrial Arts Club—12; Central News—  
12.

WILLIAM KENNETH NEFF—*General*

"Not that I love study less,  
But that I love fun more"  
Basketball Manager—10, 11; Vocational  
Club—10; Band—10, 11; School Patrol—  
11.

PATRICIA NEWELL—*Academic*

"A rosebud set with little willful thorns."  
Chorus—10, 11, 12; Decorating Committee—11; Operetta—11; Latin Club and Junior Classical League—11; Invitation Committee—12; Girl Reserves—12.

DONNA NEWTON—*Commercial*

"She is gentle—she is shy,  
But there's mischief in her eye."  
Industrial Arts Club—12; G. A. A.—12.

MARY NICOLA—*Commercial*

"She is prim, she is neat,  
She is pleasant and sweet."  
Chorus—10; Commercial Club—11; Girl Reserves—10, 11, 12; Central News Staff—12.

ALICE LOUISE PALONCY—

*Commercial*

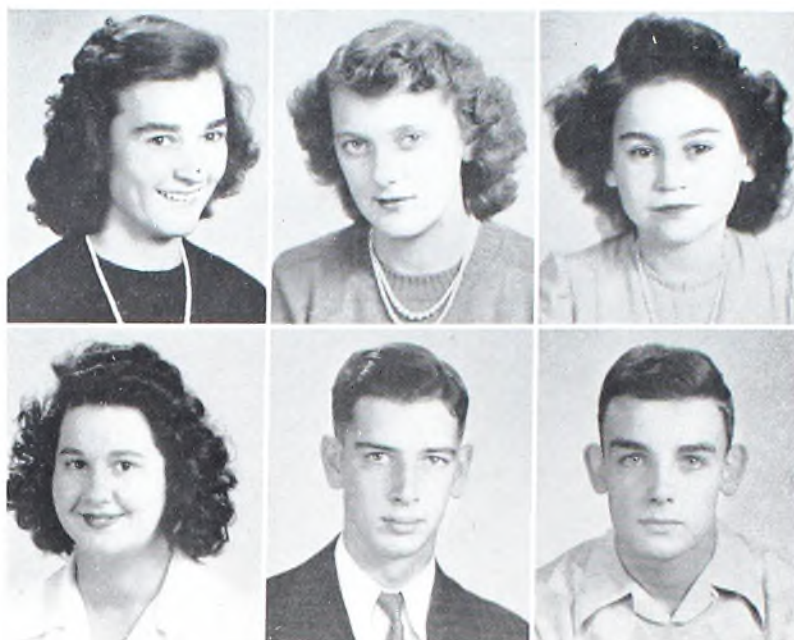
"A pensive maid, devout and pure,  
"Sober, steadfast and demure."  
Commercial Club—10; Chorus—10, 12; Industrial Arts Club—12; Central News typist—12.

JANE E. PATRICK—*Academic*

"A wondrous gift is thine,  
Forever attractive, always divine."  
Honor Club—10; Chorus—10, 12; Girl Reserves—10, 11, 12; G. R. Cabinet—11, 12; Latin Club and Junior Classical League—11, 12; Delphian Staff—11, 12.

SARAH LOU PATTERSON—*Academic*

"How lovely she would have looked,  
in a wide hoop skirt, stepping lightly  
to a minuet."  
Candy Stand—11, 12; Spanish Club—12; Central News Staff—12.



MARY LEE NUSSBAUM—*Commercial*

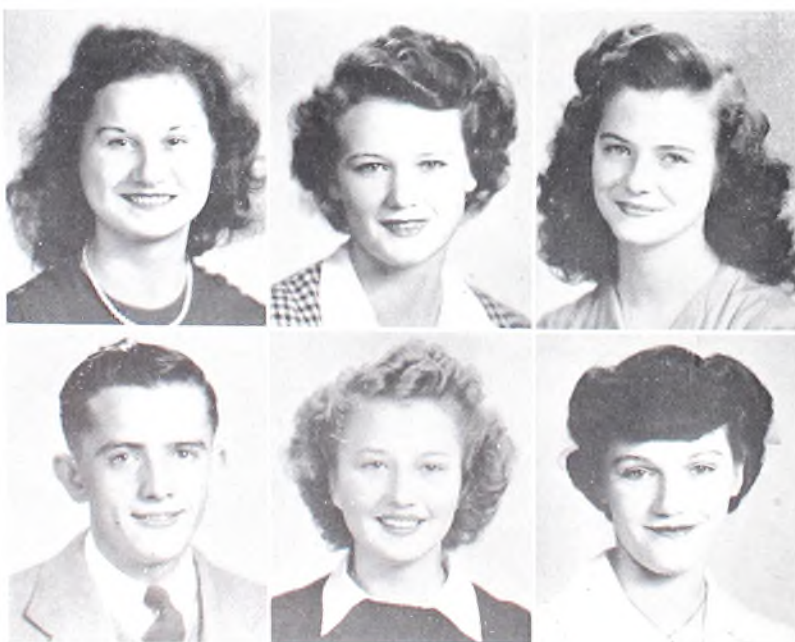
"Her hair is thick with many a curl,  
That clustered round her head."

ED OHLIGER—*Academic*

"A man's friendships are one of the  
best measures of his worth."  
Band—10, 11; Basketball—10, 11; Latin Club and Junior Classical League—11, 12; Hi-Y—11, 12.

TOM ORR—*Academic*

"His limbs were cast in manly mould,  
For hardy sports or contests bold."  
Honor Club—10; Basketball—10, 11, 12; Hi-Y—10, 11, 12; Class Officer—10, 11, 12; German Club—11, 12; Football—12.



EARL E. PAULUS—*Commercial*

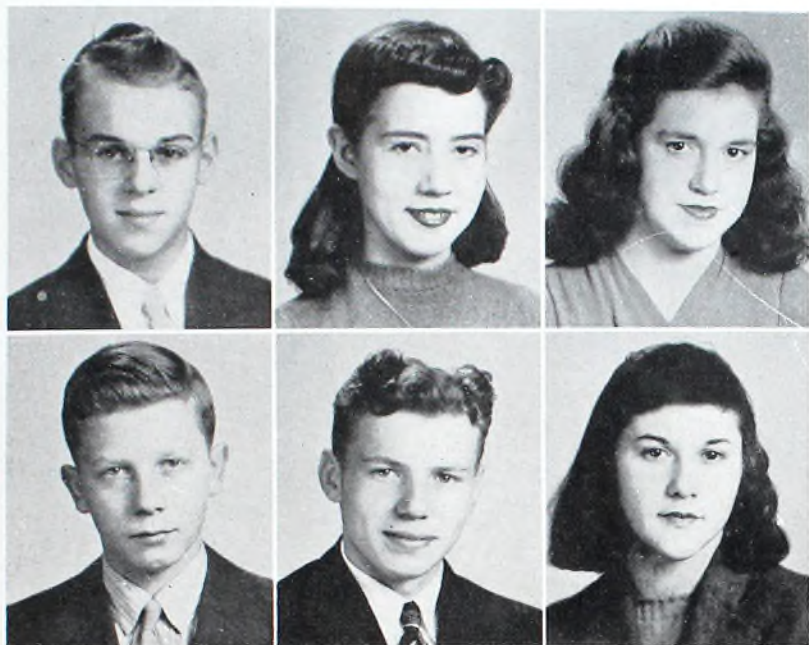
"Correct with spirit, eloquent with ease,  
Intent to reason, or polite to please."  
District Scholarship Test in Bookkeeping I—11; Honor Club—12.

GLORIA LOUISE PEARCH—*General*

"Whose merry laugh  
Hushed all the murmurs of discontent."  
Chorus—10; Commercial Club—11; Industrial Arts Club—12.

THERMA MAE PEASE—*Commercial*

"Blue eyes that waver not, but have  
in them something frank and brave."  
General News typist—12.

EDWARD POLLOCK—*Industrial Arts*

"The heart of honor,  
The tongue of truth."  
Industrial Arts Club—12.

GEORGE M. PRINGLE—*Commercial*

"He that is of merry heart hath  
a continual feast."

BETTY RAPPORT—*Academic*

"A ready tongue, a ready wit."  
Girl Reserves—10, 11, 12; Honor Club—  
10, 11, 12; Central News—10, 11, 12;  
North Eastern Ohio Journalistic Award—  
11; District Scholarship Tests—18th in his-  
tory, honorable mention in English—11;  
Class play—11; Debate Squad—10, 11, 12;  
National Forensic League—11, 12; Spanish  
Club—12.

GEORGE REIP—*Industrial Arts*

"Sometimes I sit and think,  
Sometimes I just sit."  
Football—12.

JAMES A. REISER—*Academic*

"I am he of whom you have heard so much."  
Chorus—10; Basketball—10; Class Officer  
—11; Intramural Basketball—11; Hi-Y—  
10, 11, 12; German Club—11, 12; Delphian  
Staff—12.

WILMA RENNECKAR—*Academic*

"Her fingers shame the ivory keys,  
They dance so light along."  
Girl Reserves—10, 11, 12; G. R. Chorus—  
11, 12; G. R. Cabinet—11, 12; Orchestra—  
11, 12; Honor Club—10, 11, 12; Chorus—  
10, 11, 12; Spanish Club—12.

DELBERT EARL PERKINS—

*Commercial*

"A great lover of the ladies!"  
Band—10; Chorus—10; Class play—11;  
Honor Club—10, 11, 12; District Scholar-  
ship Test in Bookkeeping, 5th in District,  
11th in State—11; Delphian Staff—11, 12;  
G. R.-Delphian play—12.

VERA PERRY—*Commercial*

"She's ever ready when in demand,  
She's always sort of a helping hand."  
Girl Reserves—10; Chorus—10, 11, 12;  
Commercial Club—11; Central News typ-  
ist—12.

HELEN PHILLIPS—*Commercial*

"Modest, cheerful, full of glee,  
We wish more girls li'e her could be."  
Band—10, 11, 12; Girl Reserves—10, 12.

SUE ELLEN RAY—*Academic*

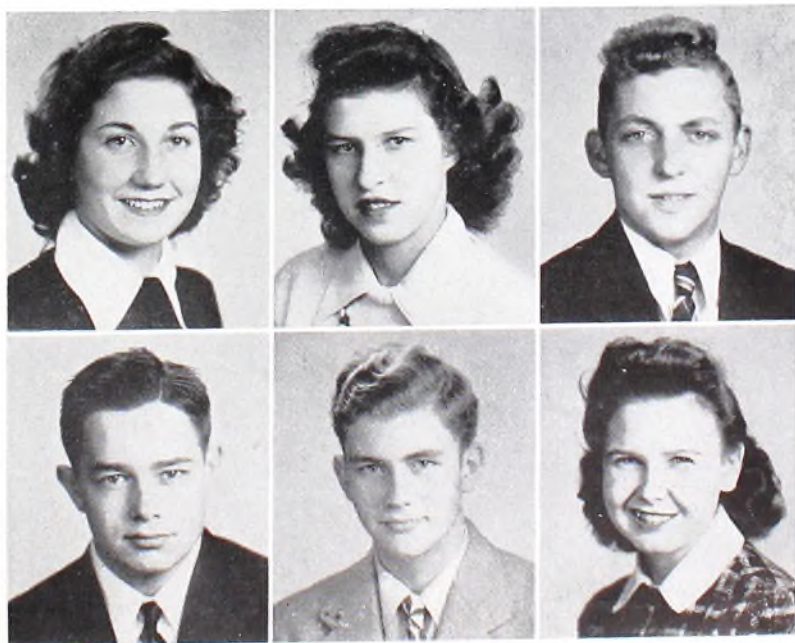
"With a voice so low and a face so sweet,  
A more pleasant one you could not meet."  
Girl Reserves—10, 11, 12; Band—10, 11,  
12; Orchestra—11, 12—G. A. A.—12;  
Spanish Club—12.

DELLA RECLA—*Commercial*

"A face with gladness overspread."  
Girl Reserves—10, 11; Commercial Club—  
11; G. O. B. S.—11; Industrial Arts Club—  
12.

GEORGE REESMAN—*General*

"Calm, cool, and collected, surely  
he will succeed in the world."





DENNIS RUDY—*Academic*

"Time devoted to study is never lost."

German Club—10, 11; Central News Staff—10, 11, 12; Chorus—11, 12; Operetta—10, 11; Honor Club—10, 11, 12; District Scholarship tests in Plane Geometry, 16th in State—10; 4th in district, 8th in State—11; in Advanced Algebra, 8th in District—11; in Physics, 4th in District and 8th in State—11; Lab Assistant—12; Honorable mention in Westinghouse Science Talent Search—12.

IRIS MAXINE RYAN—*Academic*

"Time could not chill her, fortune sway,  
Nor toil, with all its burdens, tire."

Band—10, 11; Chorus—10; Latin Club and Junior Classical League—11.

ROBERT RYAN—

"Such splendid purpose in his eyes."

RALPH SIMMERS—*Industrial Arts*

"But honest hearts make iron arms."

RICHARD SOULSBY—*General*

"For every why, he had a wherefore."

District Scholarship Test in World History, 5th in District, 10th in State—10; Band—10, 11, 12; Orchestra—10, 11, 12; Dance Band—10, 11, 12; Class Play—11; Prom Decorating Committee—11, 12; Trombone Quartet, 2nd in State—10.

CLEMENTINE STARINIERI

*Commercial*

"Here's to the girl with a heart and a smile."  
Chorus—10; Girl Reserves—10, 11; Commercial Club—11; G. O. B. S.—11; Industrial Arts Club—12.

BEVERLY RITENOUR—*Commercial*

"True blue clear through."

G. O. B. S.—11.

WILLIAM RITENOUR—*General*

"Whose armor is his honest thought,  
And simple truth his utmost skill."

JAY ROBSON—*General*

"Life's no better if we worry,  
The world's no better if we hurry."  
Intramural basketball—11.

VICTOR SCHRADER—*Commercial*

"No storm can ruffle the current of his life."

NANCY ELLEN SEVER—*Academic*

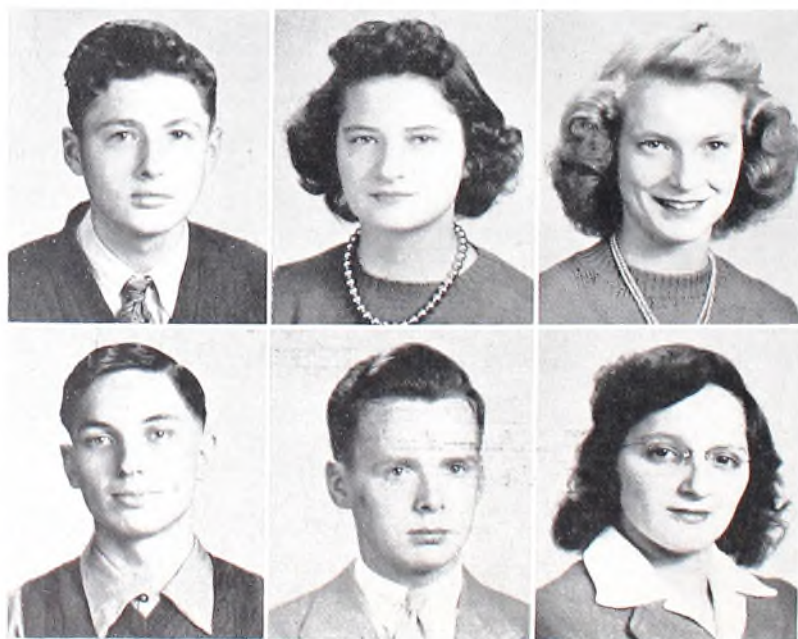
"Continual cheerfulness is a sign of wisdom."

Chorus—10; Orchestra—10, 11, 12; German Club—11, 12; Honor Club—10, 11, 12; Girl Reserves—10, 11, 12; District Scholarship Test in American History, 3rd in State in Class 1 schools, 4th in State in all schools—11; D. A. R. Citizenship Test, 2nd in State—12; Library Assistant—12.

PHYLLIS SHULER—*Academic*

"Her airs, her manner,  
All who saw admired."

Chorus—10; Girl Reserves—10, 11, 12; Honor Club—11; Decorating Committee—11; G. O. B. S.—11; Latin Club and Junior Classical League—11, 12; Delphian Staff—11, 12.



**THELMA MARIE STEVENS—Academic**

"She has made laughing a pastime  
and talking an art."

Girl Reserves—10, 11; Band—10, 11, 12;  
Orchestra—10, 11, 12; Class play—11;  
Band Staff—11; Special Chorus—11; Chor-  
us—11, 12; Spanish Club—12.

**PHYLLIS JEAN STORCK—Academic**

"Heart and hand that move together."

Girl Reserves—10, 11, 12; Delphian Staff—  
11, 12; Spanish Club—12; G. A. A.—12.

**SARAH ANN SWEASEY—Academic**

"Kind hearts are more than coronets."

Chorus—10, 11, 12; Girl Reserves—10, 11,  
12; Spanish Club—12.

**WILMA THURMAN—Commercial**

"An open-hearted maiden, true and pure."

Chorus—10, 11, 12.

**PAULINE TOLOTTI—General**

"The joy of youth and health her eyes dis-  
played,

And ease of heart her every look conveyed."

Girl Reserves—10, 11, 12; Commercial  
Club—11; Cheerleader—10, 11, 12; Assem-  
bly Committee—12; Central News and Del-  
phian typist—12; Class play—11; G. A. A.  
—12; G. O. B. S.—11.

**MARGARET TSCHUDY—Commercial**

"A cheerful smile, a winsom way,  
And friends are coming every way."

Girl Reserves—10; Industrial Arts Club—  
12.

**EVELYN SWIHART—Academic**

"Life was always meant to be enjoyed."

Operetta—10; Girl Reserves—11; G. O. B.  
S—11; Chorus—10, 11, 12; Spanish Club—  
12—Industrial Arts Club—12.

**GLORINE JANE SWISSHELM—**

*Commercial*

"Is she not more than painting can express?"

Band—10, 11; Girl Reserves—10, 12.

**BILL TATE—General**

"A rare combination of wisdom and wit,  
Half wisdom and half wit."

Band—10, 11; Class play—11; Intramural  
Basketball—11; G. R.-Delphian play—12;  
Senior Jamboree—12.

**ELLA LENORA ULRICH—Commercial**

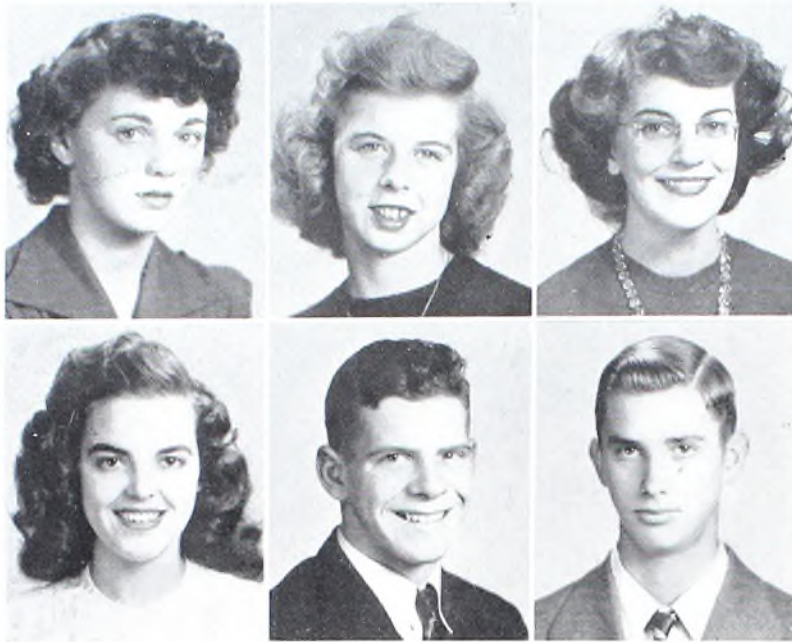
"Very quiet and sedate;  
When you know her, she's just great."  
Girl Reserves—10.

**SARA ULRICH—Commercial**

"She talk'd, she smil'd, my heart she wyl'd;  
She charmed my soul, I wist na'how."  
Commercial Club—10; Chorus—10, 11, 12;  
Industrial Arts Club—12; Nephilicos—  
12; Central News Typist—12.

**SAM URFER—Academic**

"And when a lady's in the case,  
You know all other things give place."  
Basketball—10; German Club—11; Hi-Y  
—10, 11, 12.



DORIS L WAGES—*Academic*

"Her very frowns are fairer far  
Than smiles of other maidens are."  
Band—10, 11; Girl Reserves—10, 11, 12;  
Spanish Club—12.

AUDREY WALDRON—*Commercial*

"The sweetest flower that graces spring,  
May well a tribute to you bring."  
G. A. A.—12; Central News typist—12.

MARIAN L. WALTERS—*Commercial*

"A gentle eye, a voice more kind,  
We may not look on earth to find."  
Band—10, 11, 12; Girl Reserves—10, 11,  
12; Commercial Club—11.

RUTH WALTERS—*Commercial*

"And all the beauty in the place,  
Is in thy heart and on thy face."  
Girl Reserves—10, 11, 12; Chorus—10, 11,  
12; Class play—11; Commercial Club—11;  
Nephillicos—12; G. R. Chorus—12.

JAMES WALTZ—*General*

"Look; he's winding up the watch of his wit,  
By and by it will strike."  
Industrial Arts Club—12.

JAMES WEST—*General*

"Not too serious, not too gay,  
But a rare good fellow."  
Industrial Arts Club—12.

KENNETH WHEATON WINTERS—*Academic*

"Every morning he looked over  
the girls and found a new ideal."  
Band—10, 11, 12; German Club—12.

CATHERINE WRIGHT—*Academic*

"Her eyes as stars of twilight fair;  
Like twilight's too, her dusky hair."  
Girl Reserves—10, 11, 12; Chorus—10, 12;  
Class Officer—10, 11; G. O. B. S.—11;  
Class play—11; Latin Club and Junior Clas-  
sical League—11; Assembly Committee—  
12; Spanish Club—12; G. A. A.—12.

EUGENE YOSICK—*Industrial Arts*

"The man of independent mind,  
He looks and laughs at a' that."  
Industrial Arts Club—12.

RICHARD ZAYCHEK—*Commercial*

"He who hath ambition hath a future."  
Invitation Committee—12.

MAXINE WEST—*Commercial*

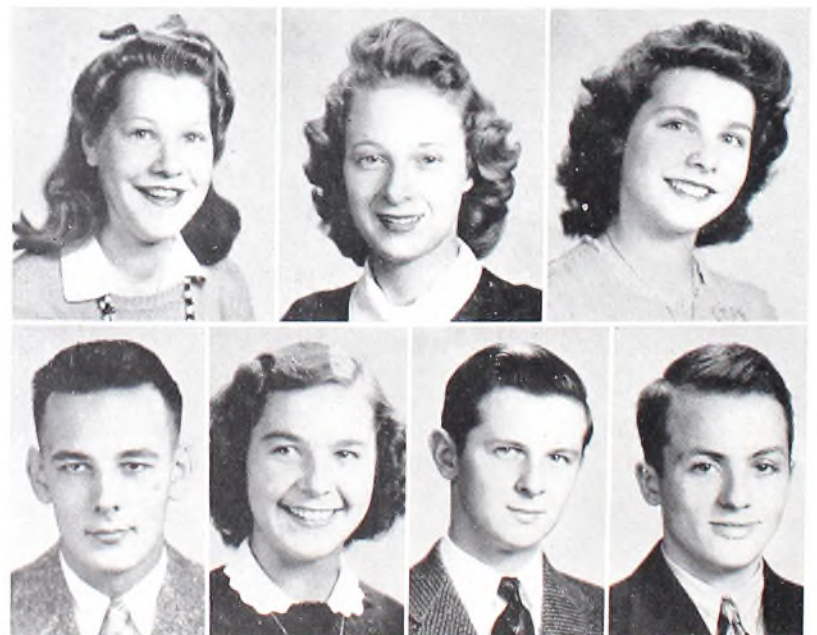
"A quiet, modest maid is she  
As good and kind as a maid can be."  
Chorus—10, 11; G. O. B. S.—11; G. A. A.—  
12.

WILMA WHITE—*Commercial*

"—Of stature fair, and slender frame."  
Chorus—10, 11, 12; Girl Reserves—10, 11,  
12; Central News—12; Librarian Assistant  
—12; G. A. A.—12.

LODEMA COLLEEN WILLIAMS—*Commercial*

"Quality, not quantity is my measure."  
Orchestra—10, 11; Commercial Club—11;  
Girl Reserves—12; Candy Stand—11, 12.



## Class of 1944 . . Camera Shy

RICHARD BRIGGS—*Academic*

"We grant, although he had much wit,  
He was very shy of using it."  
Hi-Y—12; German Club—12.

FRANK GINETTI—*Commercial*

"A man's a man for a' that."  
Football Manager—11, 12.

EARL ELLWOOD, JR.—*Commercial*

"And oft I have heard defended,  
Little said is soonest mended."

KENNETH HUTSON—*General*

"What's a man, anyhow? What am I?  
What are you?"  
Band—12.

CARL RICHTER—

"And the memory of the strong man  
Lingered long among the people."  
Football—10, 11, 12; Intramural Basketball—11; Hi-Y, 12; German Club—12.

---

## Class History

### CHAPTER ONE—Freshman Year 1940-1941

As we entered our freshman year in the Junior High School, we naturally had a feeling of superiority towards the under-classmen.

We shall always remember our Junior High School days from the memories we have of our freshman year. The Student Council, Leaders' Club, and homeroom activities kept many of us busy; others of us worked on the Weltonian Staff or as reporters for the "Quaker." The presentation of "The Mikado" included many of our classmates. And, of course, we'll never forget those noon-hour activities—basketball, volleyball, and pingpong. Then came the day we had looked forward to for a long time, our class day. We spent a very enjoyable day at Tuscora Park, skating, playing ball, and picnicking. Our freshman year came to a close with the commencement exercises which promoted us to the rank of sophomores.

### CHAPTER TWO—Sophomore Year 1941-1942

Our sophomore year found us lost in a new building filled with strange faces. We soon lost that sophisticated feeling; but after about five months of school, we began to feel a little more at home in the Senior High School. During this year, the United States declared war, and the Senior High started right in to back up our country by selling War Stamps and Bonds. Calisthenics kept us in good physical condition. Most of our time was spent on lessons, but the Girl Reserve and Hi-Y organizations filled in our spare time. The orchestra, band, and chorus gave the musically talented ones a chance to shine. As our sophomore year came to a close, we began to realize what a wonderful school we have.

## CHAPTER THREE—Junior Year 1942-1943

Our junior year began with a patriotic duty as our first activity. We conducted a scrap drive which was very successful. This year new courses were offered to prepare boys and girls to help Uncle Sam win the war. Several new organizations, the G. O. B. S. and the Victory Corps, were formed to help the war effort. Our class's first project for the year was the presentation of "What a Life" with Henry Aldrich. This is the first time for several years that a junior class put on a play, and it was a successful performance. This made it possible for us to entertain exquisitely the seniors at the annual junior-senior prom. This lovely affair brought our junior year to a close.

## CHAPTER FOUR—Senior Year 1943-1944

In September our group returned as full-fledged seniors, with all the worries, responsibilities, privileges, and joys that go with that title. We missed the faces of several of our fellow classmates. It seems that Uncle Sam had a more important job for them. Our jamboree was one of the greatest entertainments ever put on by a senior class. The main social events of the year were the senior dance, junior-senior prom at which we were now guests instead of hosts, and the senior banquet. "Smilin' Through," our class play, proved to be a great success. Our seniors suddenly turned to the romantic view of life. Class Day was a great day of folly. We skated, picnicked, and had a good time, realizing that this would be our last get-together. Impressive commencement exercises brought to a close our all too brief sojourn in the Senior High School.



## *Class Prophecy*

Although being a prophet really isn't my line,  
Nevertheless, I had a dream which came just in time  
To show me some faces, so familiar to me,  
In careers and places I never thought they'd be.

They said we would be the citizens of tomorrow. I am sure as I looked down through the years of our school life in Central High, I could see many of the outstanding qualities and ambitions of my classmates that assured me that they were capable of filling their places in that world of tomorrow.

Just as though I were peering through an opening in a cloud, they paraded before my eyes.

There is Nancy Sever. Having attained the ambition of her high school days, she is now the first woman president of the United States.

John Harstine and Einstein—the only two people in the world who understand the theory of relativity.

Edward Pollock—the newly elected president of the Farm Bureau. Strange, isn't it?  
Wilma Rennecker—now famous pianist for Fred Waring and his 55 Pennsylvanians.

Joe Gribble and Margie Edie—and all the little Gribbles. Quite an adept little housewife.

Neal "Stretch" Burke—former coach of Heidelberg College basketball team, now assistant editor of the "Cleveland Plain Dealer."

Martha Angel—the first woman pilot of the Heliocopter Airlines.

Kenny Hutson and Jim Frederick are running against each other for mayor of New Philadelphia.

Then there's Evelyn May—a well-known operator of a Brooklyn beauty salon.

Dick Lindsay—of course, he is a noted band and orchestra leader heard every evening over station A-W-O-W.

Pretty Glorine Swisshelm is the private secretary of Tope's—er, I mean, Cope's Book and Office Supply Co.

Mason and Marshall's—yes, we find Jack and Glenn co-partners of a "Sports Goods and Fishing Tackle Corp."

Ann Kirk—now assistant editor of "Vogue." Also the wife of a prominent New York attorney.

Bill Tate—now a famous orator making campaign speeches for George Reesman, local candidate for Congress.

Stevens and Storck—co-partners of a local kindergarten. Well, then, truth is certainly stranger than fiction.

Dennis Dale Rudy—famous surgeon at Johns Hopkins. Incidentally, one pretty little "angel of mercy" on the staff is none other than our own Jeanne Fritche.

Martha McNeely—yes, 'course we all knew her future before she graduated back in '44. Maurice yesterday, day before, now and forever.

Remember Dale "Dubby" Dunn? He's foreign news correspondent now for the "Daily Times."

Kathryn Marsh—Katie's a star radio songstress now singing to advertise Dr. James Chercony's "Little Pink Pills—a Sure Cure for Everything."

Then there was Homer Harris—he's a famous radio announcer on the "Hour of Charm" program.

'Course we mustn't forget Sammie Urfer, the modern wolf of the day. He now occupies the corner of Hollywood and Vine, giving out with the call of the "wild." (ow-w-w)

Mary McIntosh, society's most recent bride, has just become the wife of the United States minister to Brazil.

Yes, Vernon is still concerned with the "skirts" of the day. He recently "bought out" the Conover and Powers Modeling Agencies. Just as in '44, he's making big money, and spending it on girls—this time a whole bevy of 'em.

Delbert Perkins—ace photographer for the Indermill Modeling Agencies. They say the job really appeals to him.—Well?

'Course you've seen Ruthie Walters' pictures in the most recent magazines. Her charming face now graces the advertisement of Camay, "the soap of beautiful women."

Betty Rapport—Oh-h yes, we find Betty right in the middle of Central Europe, clearing up the chaos of World War II. She's following right in Mrs. Roosevelt's footsteps.

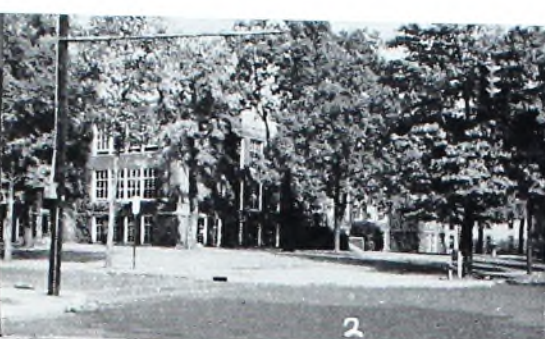
Bob McGlone—a well-known author of short stories, now living a quiet life in the hills of northern Maine. His latest article—"Night Life and Its Disadvantages."

*Sarah Lou Patterson*

## PIX of HIX



1—A rare sight . . . 2—Nice outward appearance, but— . . . 3—Brave boys . . . 4—Gazing at No. 6 . . . 5—Hiding the body? . . . 6—We think so, too . . . 7—They bravely gave up lessons for the scrap drive!! . . . 8—Isn't dancing exciting? . . . 9—Doing their bit for Armistice Day . . . 10—Funny letter? . . . 11—A gathering of the nuts . . . 12—Can't you hold her closer? . . . 13—Manpower shortage . . . 14—All alone? . . . 15—Mutt and Jeff . . . 16—This is the life . . . 17—Egad! . . . 18—Unsteady Steadies! . . . 19—Hello . . . 20—Oh well, we didn't want to win anyway . . . 21—Central News broadcasts! . . . 22—Bell rang. . .



# Class of 1945



Robert Bair      Raymond Strickmaker      Donna Graff

## Officers

ROBERT BAIR	-----	President
RAYMOND STRICKMAKER	-----	Vice President
DONNA GRAFF	-----	Secretary-Treasurer
MISS ARMSTRONG AND MR. PUGH	-----	Advisers

# Class of 1945



Row 1—Frances Aldridge, Virginia Altier, Patricia Allen, Marybelle Anslow, Janice Arnold, Vincent Aveni.

Row 2—Robert Bair, Virginia Ball, Jerry Beaber, Wilford Beal, Marvin Beans, Donna Beans.

Row 3—Dorothy Bear, Lois Bigler, Annabelle Bird, Erma Bond, Madge Bucher, Charles Burtscher.

Row 4—June Carpenter, Robert Casebeer, Jeanne Chaney, John Cole, Mary Nina Congleton.

Row 5—Leah Coutts, Charles Cronebaugh, Jack Davis, Doris DeArment.

Not in picture—Edward Browning and Gloria Conconi.

# Class of 1945



Row 1—Mary Ella Diefenbacher, Ellwood Demuth, Albert Dolzine, Mary Lou Doney, Nalta Dotts, Virginia Dragich.

Row 2—Helen Duncan, Jane Eckert, Carol Eichel, Joanne Ellwood, Jean Endres, Mickey Engel.

Row 3—Martha Fishel, Betty Fisher, Stanley Fisher, Lawrence Fitzpatrick, Wanda Fisher, Theresa Galleneri.

Row 4—Richard Geib, Zoa George, Mildred Glazier, John Goudy, Donald Gowan, Donna Graff.

Row 5—Trevia Graff, Dick Gray, Ruth Gregory.

Not in picture—Jean Dudley, Edna Gibson and Donald Graff.

# Class of 1945



Row 1—Clarence Hanna, Janet Hanson, June Hare, Robert Harris, Jerry Hassin, Carl Hollingsworth.

Row 2—Robert Homan, Norma Lee Hoover, Ray Horn, Junior Ickes, Dorothy Jones, Jeanne Kappeler.

Row 3—Margaret Kappeler, Coralene Kaylor, Marie Kelly Katherine Kinsey, Janice Kuenzli, Omer Kiser.

Row 4—Wayne Kiser, William Kniesner, Twila Knisely, Howard Kopp, James Kuhn.

Row 5—Robert Lane, David Leading, Eugene Lightel, Ruth Lowmiller, Dorothy Lamb.

Not in picture—Eugene Knisely and Tom Lehman.

# Class of 1945



Row 1—Zola Marinelli, Margie Marsh, Pauline Martin, Donna Mason, Shirley Mason, Dale McClelland.

Row 2—Gene McInnis, Mary Lou McCullough, Iva McIlvaine, Margaret McKerrihan, Reno Menapace, Robert Menapace.

Row 3—Carl Mercer, Elizabeth Miller, Dan Miskimen, Shirley Mitchell, Bonnie Morris, Charles Meyer.

Row 4—Julianne Myer, John Orlando, Betty Parker, Faith Parsons, Jack Parson, Ellen Passoni.

Row 5—James Patrick and Ruth Patrick.

Not in picture—Samuel Neibert, Donna Newton, Helen Orlando, and Mary Page.

# Class of 1945



Row 1—Edward Patterson, George Patterson, Oscar Patterson, Delbert Perry, Roland Platz, Edward Pongratz.

Row 2—Eleanor Pringle, Kathryn Raiff, Doris Rawes, Mary Richards, Hubert Reigle, Dorothy Robb.

Row 3—Betty Lou Rosenberry, Dean Rummell, Donald Rutledge, Anne Schuepbach, Betty Shafer.

Row 4—Betty Lou Sherretts, Mary Lou Sherrets, John Spittle, Patsy Stemple, Evelyn Stiffler.

Row 5—Fred Stilwell and Jack Stoneman.

Not in picture — Marjorie Schumacher, Robert Seibert, Mae Stanfield, and Cecil Stocker.

# *Class of 1945*



Row 1—Raymond Strickmaker, Ann Strimbu, Nick Strimbu, Marie Stucky, Eugene Surbey, Margaret Swihart.

Row 2—Frieda Swinderman, Dorothy Thomas, Margery Thomas, Eugenie Tilton, Cora June True.

Row 3—Norma Jean Turney, Edna Ulrich, Joan Waddington, Delbert Walton, Mary Warner.

Row 4—Robert Weber, Marjorie West, Ann Weuthrick, Joanne Williams, Glen Winkler.

Row 5—Jerry Winters, Anna Wyatt, Leonia Zimmerman, Shirley Zurcher.

Not in picture—Tom Strimbu, Norma Jean Thomas, Joseph Vielmetti, and Frances Walker.

## "The Play's The Thing"

JUNIOR CLASS PLAY—"The Fighting Littles"—February 24

### THE CAST

ALMATINA, <i>who runs the kitchen</i>	Mary Nina Congleton
COUSIN OLITA, <i>a comfortable sort</i>	Eugenie Tilton
FILMER, <i>who can't keep out of trouble</i>	Charles Meyer
HAM ELLERS, <i>who is a regular guy</i>	John Cole
MR. LITTLE, <i>who is not as cross as he sounds</i>	James Patrick
GOODY, <i>who's almost too beautiful</i>	Margie Marsh
MRS. LITTLE, <i>who would like a peaceful household</i>	Joanne Ellwood
ANTOINETTE, <i>who thinks Filmer is wonderful</i>	Ruth Lowmiller
SREWBALL, 17, <i>just that</i>	Dorothy Thomas
CUCKOO, <i>ditto</i>	Patsy Stemple
HENRIETTE, <i>an enchantress from the South</i>	Shirley Mitchell
NORMAN PEEL, <i>who is father's choice</i>	Robert Casebeer
DICKY HARPEDDLE, <i>who's something of a problem</i>	Richard Gray
MRS. HARPEDELLE, <i>who thinks Dicky is wonderful</i>	Zola Marinelli
MISS POGOLA, <i>who is sensitive</i>	Kathryn Kinsey

### THE STORY

The Junior Class chose "The Fighting Littles" to present as its dramatic project for this year. It is adapted from Booth Tarkington's novel of the same title. The Littles are a family with opinions of their own and the temperament to express themselves. Each member of the family wants to live in his own way, except Mother Little, who is kept busy trying to keep the peace. Daddy Little thinks all his daughter's friends are young hoodlums. Goody tries to be the kind of daughter he thinks he wants, but this confuses everybody.

Through three acts the quick-tempered Littles squabble their way through differences in viewpoint and ridiculous situations without even knowing how funny they are. When the battle royal is over, they discover that they have learned to understand each other and are really a united family, and Mr. Little discovers that the young folks aren't all going to the dogs after all.

SENIOR CLASS PLAY—"Smilin' Through"—May 5

### THE CAST

JOHN CARTARET	Dale Dunn
DR. OWEN HARDING	Kenneth Winters
ELLEN (young)	Pauline Tolotti
ELLEN (old)	Kathryn Marsh
KATHLEEN DUNGANNON	Sarah Lou Patterson
WILLIE AINLEY	Delbert Perkins
KENNETH WAYNE; JEREMIAH WAYNE	Don Mathias
MOONYEEN CLARE	Ann Kirk
MARY CLARE	Glorine Swisshelm

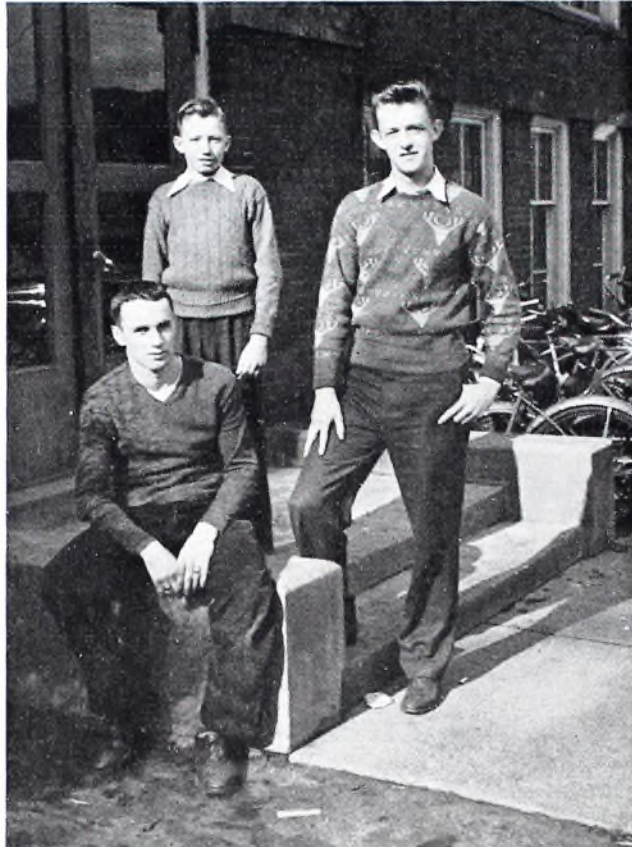
The cast also includes the following extras:

Ruth Walters, Bonnie Bailey, Martha Angel, Jack Gunther, Robert McGlone.

This fantastic comedy-drama is the story of the spirit of a woman who returned to help a pair of young lovers achieve the happiness of which she had been thwarted fifty years before.

On the eve of her wedding night she fell victim to a bullet meant for the man she was to marry. The shot was fired by a rejected suitor, and over the ages a great hatred has existed between the two families. The spectacular manner in which the boy and girl of the present generation are united and find their happiness is a thrilling and gripping climax to the series of incidents which precede it.

# Class of 1946



Robert McMillen    Robert Singhaus    William Quicksall

## Officers

WILLIAM QUICKSALL ----- *President*  
ROBERT SINGHAUS ----- *Vice President*  
ROBERT McMILLEN ----- *Secretary-Treasurer*  
MISS FONDELL AND MR. STOUGHTON ----- *Advisers*

# Class of 1946



Row 1—Keith Ables, Marjorie Angel, Lois Angus, Marie Arend, Frances Aubihl, Delbert Bair.

Row 2—Dorothy Barnish, Frances Barnish, John Bates, Anthony Battalio, Burton Beaber, Beverly Beans.

Row 3—Jerry Bernard, Noela Bivenour, Anna Bonifant, Vera Bonvechio, Jane Boyce, Nancy Brown.

Row 4—Dawn Breyer, Marjorie Bucher, Rosanna Buckohr, Mary Buckohr, Norma Jean Buckohr.

Row 5—Ruth Buchohr, Betty Byers, Robert Caples, Dorothy Cercone, Joseph Cheslock.

Not in picture—Agnes Breehl, Virginia Bucher, George Callahan, Donald Angel.

# Class of 1946



Row 1—Barbara Cope, Darrel Cope, Dean Coutts, Mildred Croxton, Homer Dummermuth, Mary Dumermuth.

Row 2—Bobby Edwards, Robert Edwards, Mary Emerson, Mary Erwin, Virginia Ewbank.

Row 3—Lucy Everett, John Fagley, Frank Fischio, June Fisher, Eugene Fuhrer.

Row 4—John Furniss, Mary Garabrandt, Dorothy Garner, Dominic Ginnetti, David Gopp.

Row 5—Bill Gowins and Arleen Gregory.

Not in picture—Frank Davis, Virginia Enold, Elizabeth Everett, Sara Foster, Evelyn France, John Grages, and Shirley Grubb.

# Class of 1946



Row 1—Donald Haines, Glen Hall, Elvin Hannahs, Bob Harris, Laird Harstine, Leonard Harstine.

Row 2—Lois Harstine, Don Hart, Joan Herron, Lloyd Holleyoak, Norman Jackson, William Jackson.

Row 3—Charles Jones, Helen Kaderly, Eileen Kail, Robert Kail, Phyllis Kallenbaugh, Charles Keenan.

Row 4—Phil King, Jacqueline Knisely, Norma Kuenzli, Jack Lewis, Rhoda Light, Mary Ann Limbach.

Row 5—Joe Lintz and Charles Lowther.

Not in picture—Robert Harbin, Marie Herron, Ray Hornbeck, and Regina Liberatore.

# *Class of 1946*



Row 1—Dick Maholm, Mary Maughan, Donald Maurer, Edith Maurer, Joanne Maus, Eugene Martin, Norma Martin.

Row 2—Evangeline May, Joan McCarty, Beverly McCoy, Sadie McGinnis, Joan McKnight, William Medley.

Row 3—Lillian Mennom, Dick Miller, Barbara Mohny, Dorothy Moore, Ila Mae Moore, Jacqueline Merriman.

Row 4—Robert Morrison, Thomas Murphy, Charlotte Mowrer, Vanessa Murray, Noma Myers, Paul Neiger.

Row 5—Ruth Nolan, Wilma Paulus, Donald Peach, Judith Peach, Jane Phillips, Margery Price.

Not in picture—Robert McMillen, William Peach, Ruth Pease.

# Class of 1946



Row 1—William Quicksall, Jim Rapport, Wallace Reed, Jane Reiser, Bonnie Reynolds, Fred Ricketts.

Row 2—Hope Rosch, Shirley Ross, Robert Rufenacht, Charles Scalambrino, Jeanne Schindler, Howard Schneider.

Row 3—Margaret Schneider, Dale Schwartz, Joanne Shaw, Mary Sherer, Thelma Shott, June Simmers.

Row 4—Jack Singerman, Robert Singhaus, Rose Slough, William Smith, Lillian Sopinski.

Row 5—Dean Stevens, William Stewart, Norma Sweany, Dorothy Swinderman, Robert Swinehart, Majel Swisshelm.

Not in picture—Lyle Rogers, Harold Shaw, Marjorie Smitley, John Spittle, and Grace Steiner.

# Class of 1946



Row 1—William Tabernac, Harold Thomas, Gene Thomas, Holt Tonkin,  
Betty Tygard, Richard Valentine.

Row 2—Donald Vining, Alice Watkins, Walter Watson, Ted Wenger, Wanda  
West, Bernice Williams.

Row 3—Jacqueline Williams, James Wills, Robert Winters, Charlene Wolf,  
Robert Wood.

Row 4—Margaret Wright, William Yaggi, Shirley Young, Leroy Yaggi,  
Pauline Yost, Leon Yarnell, John Zion, Mike Yosick.

Not in picture—William Valentine and Edward Warmack.



## Senior Class Will

We, the Class of 1944, of New Philadelphia Senior High School, assured of being not only in splendid health but also in complete possession of our mental faculties (such as they are), aware of the fact that our school life is coming rapidly to a close, and following the custom of our predecessors, do make, and declare, and publish this, our last will and testament, bestowing our cherished possessions upon the heirs whom we have deemed deserving:

To Elvin Hannahs we bequeath John Harstine's accumulated knowledge.

To Bob Ed Harris we will Tom Orr's build and "Buck" Browning's strength.

To any junior girl, who has the social background, we donate Cecil Stocker's "sub-deb" laughter.

To Jane Boyce, we leave Herman Bergman's debating ability.

To John Goudy we bequeath Neal Burke's towering stature.

To anyone who can't keep his feet still, we will the Dance Band leadership with Dick Lindsay's compliments; or as second choice, Sam Urfer's yen for travel.

We will Wilma Renneckar's dexterity on the piano to Joanne Williams.

To any girl needing only one eye we give Kate Marsh's hair do.

We bequeath Bill Tate's jokes and Delbert Perkins's poems to Jim Patrick, if he needs them.

To any junior boy wanting a "WAVE" we pass along "Andy" Cheslock's hair.

To all of the five sophisticated junior girls we will Ann Kirk's figure (geometry, of course).

To Stan Fisher and "Rich" Geib we give Jim Reiser's and "Dutch" Intermill's ways with women and chem lab odors!

To Dave Leading we will not only Jack Gunther's ability to drive safely but also Jim Waltz's ability to observe the "victory speed."

To any junior or sophomore with a lion's heart, we leave Jack Mason's ability to kid Miss Helmick and get away with it.

To the rest of the students we bequeath as heirlooms our engravings in the double study hall, the collapsible chairs in the band room with their hoard of gum, our worthy class advisers plus the rest of the weary faculty, and last but not least our famed alma mater, Central High!

We do hereby designate our worthy advisers, Miss Helmick and Mr. Williams, as executors of this document, to which we affix our seal of gratitude on this day of graduation, the twenty-fifth day of May, nineteen hundred and forty-four.

THE SENIOR CLASS

Witnessed by Dennis Rudy and Jeanne Fritche

# *Girl Reserve . . Delphian Staff Play*



William Tate, Margaret Schneider, Evelyn Stiffler, Delbert Perkins, Marjorie Schumacher, James Reiser, James Patrick, Julianne Myer, Keith Abies, Joanne Williams, Richard Gray, Robert Morrison, Robert McGlone.

## *"Ever Since Eve"*

### CAST OF CHARACTERS

MRS. CLOVER	-----	Evelyn Stiffler
JOHNNY CLOVER	-----	Delbert Perkins
MR. CLOVER	-----	Bill Tate
SPUD ERWIN	-----	James Patrick
SUSAN BLAKE	-----	Marjorie Schumacher
BETSY ERWIN	-----	Julianne Myer
MARTHA WILLARD	-----	Joanne Williams
OFFICER SIMMONS	-----	Robert Casebeer
HENRY QUINN	-----	James Reiser
LUCYBELLE LEE	-----	Margaret Schneider
PRESTON HUGHES	-----	Robert McGlone
FOOTBALL PLAYERS	-----	Robert Morrison, Richard Gray, Keith Ables

"Ever Since Eve," by Florence Ryerson and Colin Clements, takes place in the office of Johnny Clover, editor-in-chief of the "Penguin," the school newspaper. He and his friend Spud are very disgusted at being forced to have Susan Blake as their associate editor. They are striving to purchase a three-color cover for the Christmas issue of the "Penguin," but are unable to sell enough ads to pay for it. Matters are complicated when both boys come down with the measles. The responsibility of editing the "Penguin" thus falls to Susan who, by much swapping of objects around town, manages to secure the three-color cover, and to pay for it. When the paper comes out, however, great excitement arises because of Susan's printing various articles together, such as falsely announcing the marriage of Martha Willard and Principal Henry Quinn of the high school. Lucybelle Lee, a southern belle, causes great commotion during the play. At last everything is straightened out and things once more are running smoothly.

## THE POET PAINTS THE PAST

*Calendar*

## SEPTEMBER

- 7—Summer's gone, and we are back  
To find out what our minds do lack.  
10—This afternoon we were all set free  
To attend the annual county spree.  
17—This was the night our team went to town  
With Harris scoring our first touchdown.  
22—The mighty Seniors chose Andy to rule  
The best darn class in the whole darn school.  
25—The doors were opened, set free again  
To see our country's fighting men.

## OCTOBER

- 11—The Delphians went on sale today;  
So don't get anxious, they'll be out in May.  
12—Many lassies from the tenth year up  
Came to attend the G. R. Round-Up.  
22—An did ye all hear Macbeth today,  
When Jack Rank presented that famous play?  
26—Some patriotic Senior girls score  
And help issue Ration Book No. 4  
29—We came in style  
To dance a while.

## NOVEMBER

- 23—The Juniors were seen on the campus green  
To have their faces put on Dutton's screen.  
5—An Air WAC, with recruiting crew,  
Came to tell our girls what they could do.  
16—Industrial Arts classes strive and strive  
To get lots of metal for their drive.  
25—This Thanksgiving Day the sun shone bright,  
And our football team portrayed its might.

## DECEMBER

- 3—"Ever Since Eve" sure gave us a laugh—  
The play given by G. R. and Delphian Staff.  
7—Hoerneman presented his new squad  
Who beat Bolivar and pleased the crowd.  
13—At banquet the Boosters did celebrate,  
And gave the football team a cheer they rate.  
23—Because of flu, vacation starts early,  
But not one of us is surly.  
29—Brickels' Huntington team guests of Phila.  
And they were a good team, really.

## JANUARY

- 3—With vacation memories school resumes;  
Exams soon, so studying booms.  
10—Yes, and here they are!  
Knowing so little, how did we get so far?  
11—Phila 40, Dover 24.  
Could we ask for any more?  
24—For Fourth War Loan there is a contest,  
To see which class can sell the best.  
28—Entertained by Magician Frye;  
Decide the hand is quicker than the eye.

## FEBRUARY

- 4—At the special school talent assembly  
We wondered that such performances could be.  
15—In Canton Timken game  
New Phila soars to fame.  
17—We saw something rare—  
A demonstration of liquid air.  
18—Tonight the G. R. dance was grand  
And so was Harry Woodfield's band.  
24—"The Fighting Littles," by Junior Class,  
Was attended by parents and friends en masse.

## MARCH

- 3—Down to Dennison we went  
To beat Cambridge in the tournament.  
10—Seniors tried out for scholarship,  
And, boy, that test was a "pip."  
15—Senior boys took V-12 test  
So navy could pick out the best.  
21—The G. R.'s entertain their Dads tonight  
With music, refreshments, and a play, gay and light.  
24—Banquet and dance for the Hi-Y  
Was enjoyed by many a gal and guy.

## APRIL

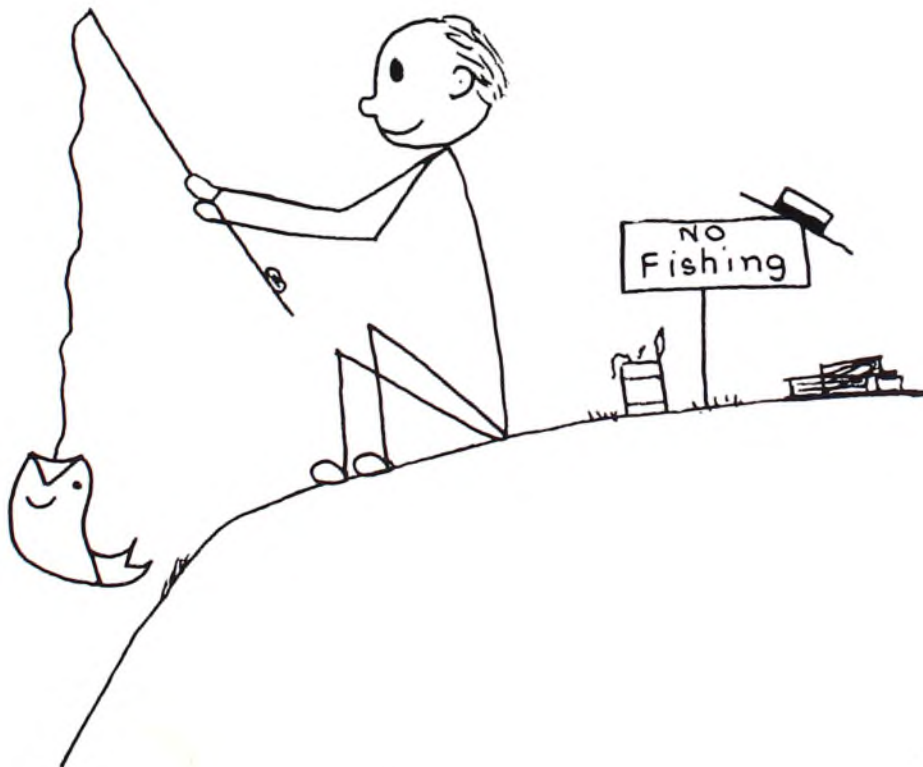
- 3-4-5—The candles in the Auditorium shone bright  
For pre-Easter services sending forth their light.  
6—For three whole days school bells won't ring.  
Why? Oh, because at last it's spring.  
21—Seniors had annual Jamboree  
And at night had a class party.

## MAY

- 5—In "Smiling Through" Senior stars shine,  
And audience enjoys every line.  
13—The Mother-Daughter tea  
Was lovely as it could be.  
19—The music soft, the lights low,  
At the Prom everything just so.  
21—Baccalaureate helped finish high school years  
For boys and girls with eyes full of tears.  
23—The Seniors came to dance and dine,  
And all said the reception was divine.  
25—Seniors, in caps and gowns, sedate,  
Marched down the aisles to graduate.

# ACTIVITIES

- 
- 
- 
- 



# The Band



Billy Murphy

Row 1—Joan McCarty, Martha Fishel, Joanne Maus, Jerry Hassin, Janet Hansen, Elizabeth Miller, Margaret Brown, Mary Emerson, Marion Walters, Mary Ann Limbach, Jane Reiser, Dorothy Thomas, Sue Ray.

Row 2—Don Hart, Robert Ryan, Crystal Leavengood, Helen Phillips, Doris Wages, Elvin Hannahs, John Powell, Shirley Kimmel, Virginia Ewbank.

Row 3—Jean Fowler, Keizo Yamada, Coralene Kaylor, Dick Lindsay, Marilyn Moffit, Marjorie Angel, Leonia Zimmerman, Joe Lintz, Harold Thomas.

Row 4—Don Ulrich, Winifred Buchanan, Mary Jane Bair, Jim Hewitt, Robert Williams, Kenneth Exley, Fred Ricketts, Bob Singhaus, Lawrence Wynett.

Row 5—Jerry Winters, Jack Davis, Carl Mercer, Carl Laughlin, Lois Angus, Mary Buchanan, Thelma Stevens, John Winters, Herman Mcnace, John Renneker.

Row 6—Sara Foster, Dick Soulsby, Bob Scibert, Bob Morrison, Carl Hollingsworth, Marjorie Schumacher, Dorothy Lamb, Kenneth Winters, Mr. Jolly, Jerry Bernard.

Row 7—John Wright, Dean Albangh, Don Rutledge, Donna Beans, Reno Menapace, David Leading.

Row 8—Kenneth Hutson, Byron Ball, Gerald Harstine, Dean Stevens.

Not in picture—Treva Graff, Eugene Surbey, Richard Geib, Joan Morrison, Earl Fisher, Don Maurer, Eleanor Patterson, Margaret Beckwith, Hester Armstrong, and Jerry Sullivan.

Despite the fact that they were handicapped by the loss of their former instructor, Mr. Bliss, the band under their new director, Mr. Jolly, hung up another grand record this year. They worked hard and gave us many fine shows at the football games, especially at the Thanksgiving game. Because of the war restrictions, the band wasn't able to attend many out-of-town games but made up for it by playing for civic affairs, assemblies, and concerts.

# Orchestra



Row 1—Sue Ray, Dorothy Thomas, Mary Ann Limbach, Joanne McCarty, Jacqueline Williams, Jerry Hassen, Leonia Zimmerman.

Row 2—Janice Hiller, Shirley Mitchell, Bobby Edwards, Mary Emerson, Nancy Sever, Helen Kaderly, Jeanne Fritche, Margaret Schneider, Keith Ables.

Row 3—Robert Singhaus, Harold Thomas, Richard Soulsby, Robert Morrison, Thelma Stevens, Treva Graff, Jeanne Kappeler, Donald Rutledge, David Leading

Row 4—Mr. Jolly, Mary Buchanan, Jean Fowler, Elvin Hannahs, Jerry Winters, Carl Mercer.

Not in picture—Don Maurer, Jane Reiser, Joe Lintz, Wilma Renneckar.



## *The Dance Band*



Coralene Kaylor, Joanne Williams, Marilyn Moffit, Richard Lindsay, Jerry Winters, Robert Seibert, Richard Geib, Richard Soulsby, Earl Fisher, and Lois Kinsey.

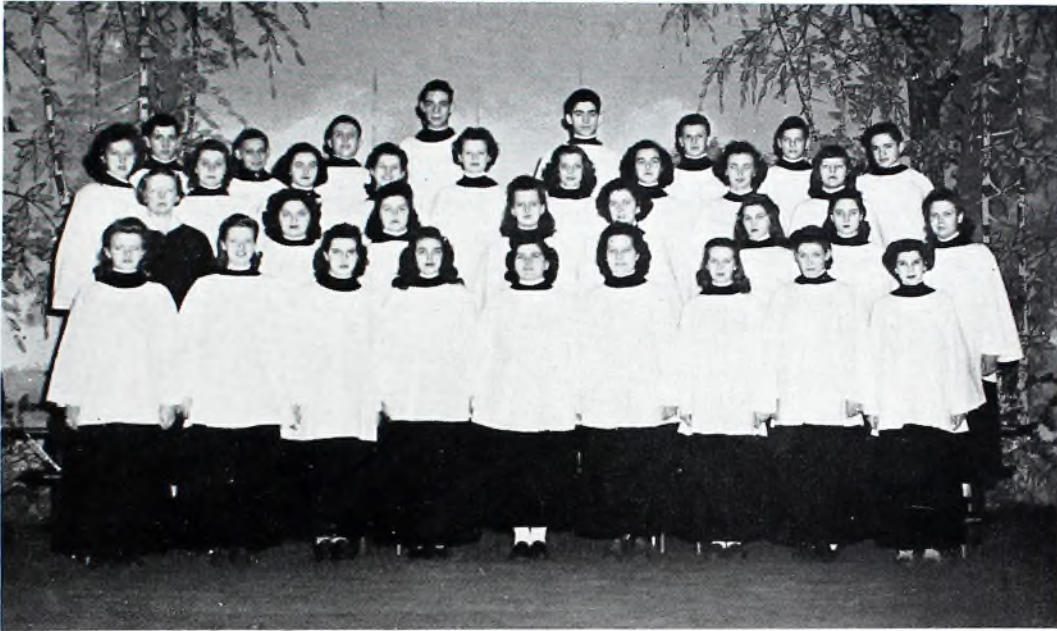


## *The Modernairs*

The "Modernairs" are those solid-senders you've been hearing at the school-stomps. The ole maestro is Dick Lindsay, the king of the mellow sax. Their aim is to give out with jive that's on the beam for all you hep-cats. To get in the groove, they do all their practicing outside of school. The founder was Bill Moffit, now making sweet music on his trombone for the Coast Guard Band.

The rhythm section, composed of Mary Buchanan, Jerry Winters, and Jo Williams, keeps the beat for the red-hot trumpet section, starring Rich Geib and Earl Fisher; for the throbbing saxes, Corky Kaylor, Briggie Moffit, and Dick Lindsay; and for those smooth trombonists, Bob Seibert and Dick Soulsby. The lassie Lois Kinsey does the warbling. To hear them is to cheer them.

## *Nephilthicos*



Row 1—Sara Graff, Edna Ulrich, Janice Arnold, Ruth Walters, Jeanne Kappeler, Bonnie Bailey, Lois Bigler, June Carpenter, Ruth Lowmiller.

Row 2—Miss Shaw, Anne Schuepbach, Twila Knisely, Dorothy Jones, Cora True, Margie Edie, Ann Weuthrick, Wilma Rennekar.

Row 3—Zoa George, Sara Ulrich, Joanne Ellwood, Ann Kirk, Jane Patrick, Norma Lee Hoover, Eugenie Tilton, Joanne Williams, Kathryn Marsh.

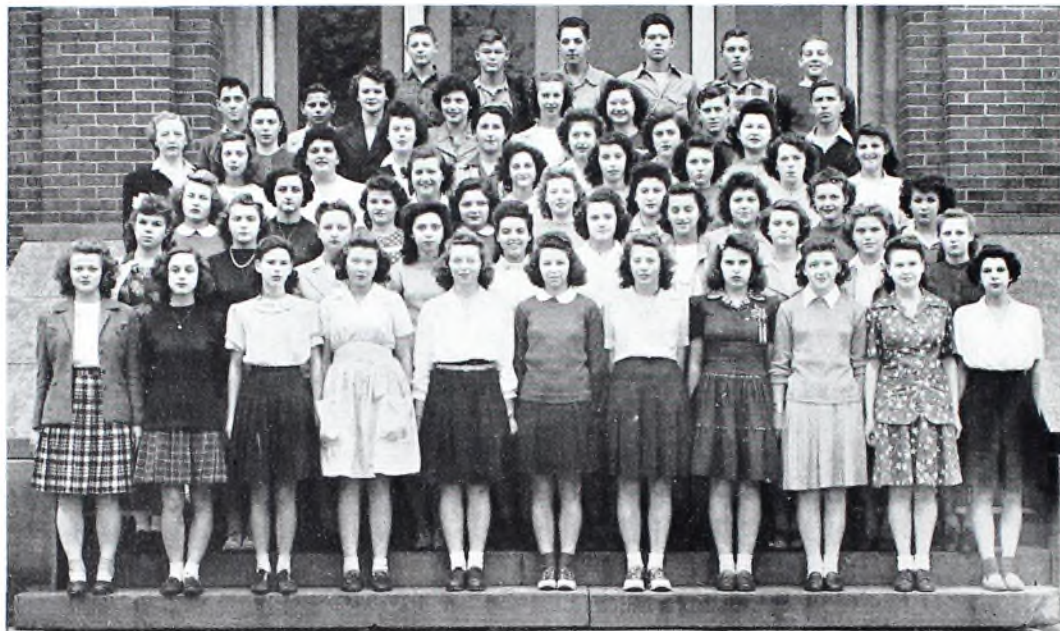
Row 4—Laird Harstine, Robert Lane, Fred Ricketts, Don Hart, Jack Parson, Dale Dunn, Charles Cronebaugh, Norman Jackson.

Not in picture—Patsy Stemple, Nalta Dotts, Mary Garner, Delbert Perry, Dean Stevens, Keith Ables, Joe Lintz, Roland Platz, Robert Seibert.



The name is new but not the type of organization. The members of this group are selected from the regular chorus classes. They have performed for various school assemblies and services in the community. Outstanding among these was the program for the Senior High School assembly and the singing they did at the Spiritual Emphasis Week service.

## *First Period Chorus*



Row 1—Sara Graff, Barbara Mohny, Majel Swisshelm, Shirley Young, Thelma Bucher, Jacqueline Knisely, Jayne Crites, Janice Arnold, Patsy Stemple, Wilma Renneckar, Ruth Lowmiller.

Row 2—Norma Jean Sweany, Sara Ulrich, Mary Garner, Wilma Thurman, Ruth Walters, Norma Kuenzli, Lillian Sopinski, Margaret Schneider, Rose Slough, Norma Kerr.

Row 3—Mary Dessecker, Joanne Ellwood, Frieda Swinderman, Anna Mae Schuepbach, Edna Ulrich, Theresa Galleneri, Madge Bucher, Bonnie Morris, June Carpenter.

Row 4—Miss Shaw, Norma Lee Hoover, Jeanne Kappeler, Donna Mason, Mildred Glazier, Doris DeArment, Erma Bond, Frances Aldridge, Norma Jean Turney.

Row 5—Bette Anne Fisher, Jeanne Fritche, Evelyn Swihart, Zoa George, Cora True, Lois Kinsey.

Row 6—Robert Lane, Jane Patrick, Loris Larkin, Betty Dudley, Alice Paloncy, Daie McClelland, Don Maurer.

Row 7—Keith Ables, Dennis Rudy, Jack Gunther, Jack Parson, Dean Stevens, Delbert Perry.

Not in picture—Laird Harstine and Ray Horn.

## *Eighth Period Chorus*



Row 1—Marie Arend, Dorothy Barnish, Anna Bonifant, Barbara Cope, Noela Bivenour, Virginia Enold, Twila Knisely, Norma Martin, Jeanne Schindler, Joan Herron, Lois Bigler.

Row 2—Mary Nina Congelton, Mary Lou Sherrets, Betty Lou Sherrets, Marjorie Marsh, Bonnie Bailey, Vanessa Murray, Joan McCarty, Hope Rosch, Sara Foster, Nalta Dotts, Ann Weuthrick.

Row 3—Miss Shaw, Noma Myers, Shirley Grubb, Lois Harstine, Arlene Gregory, Jane Reiser, Bobby Edwards, Jane Boyce, Joanne Shaw, Faith Parsons, Zola Marinelli, Dorothy Jones.

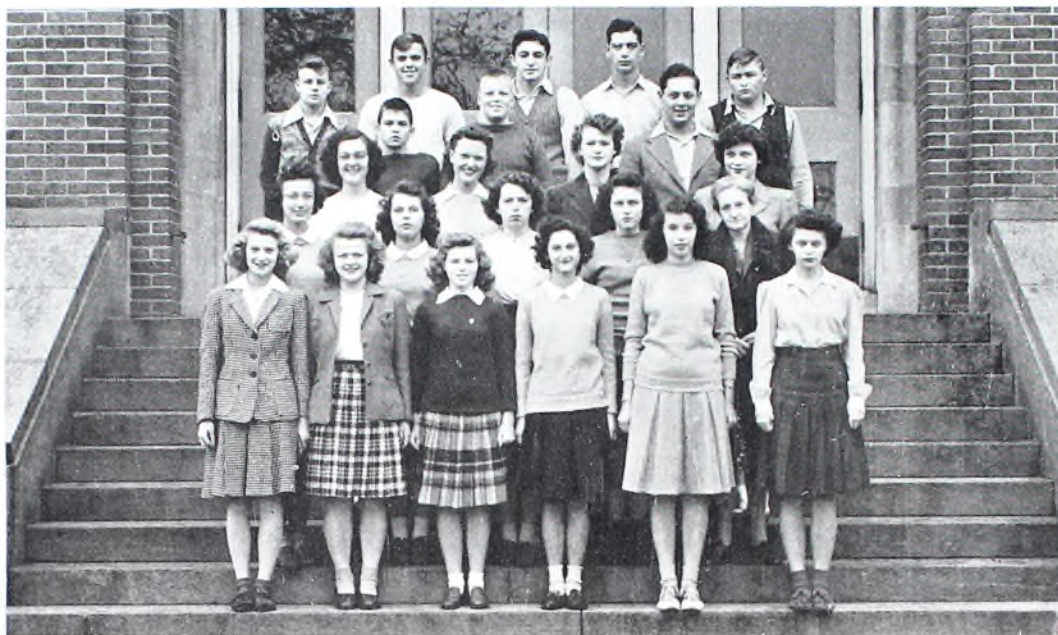
Row 4—Leah Coutts, Eugenie Tilton, Virginia Dragich, Joanne Williams, Wanda West, Charlotte Mowrer, Patricia Newell, Wilma White, Sarah Sweasey, Kathryn Marsh, Margie Edie, Ann Kirk.

Row 5—Fred Ricketts, Bill Peach, Roland Platz, Norman Jackson, Jerry Bernard, Phil King, Dale Dunn, Charles Cronebaugh, Charles Jones.

Row 6—Robert Seibert, Don Hart, Robert Casebeer.

Not in picture—Frances Barnish, Catherine Wright, Thelma Stevens, Dawn Breyer, Richard Soulsby, Joe Lintz.

## Latin Club and Junior Classical League



Row 1—Phyllis Shuler, Sara Graff, Julianne Myer, Mildred Glazier, Doris DeArment, Janice Kuenzli.  
Row 2—Joanne Williams, Joan Waddington, Frances Aldridge, Erma Bond, Miss Rutledge.  
Row 3—Eugenie Tilton, Mary Buchanan, Jane Patrick, Doris Larkin.  
Row 4—John Goudy, Jim Patrick, Herman Bergman.  
Row 5—Bob Cope, Jack Stoneman, Stanley Fisher, Ed Ohliger, Junior Browning.

### Officers

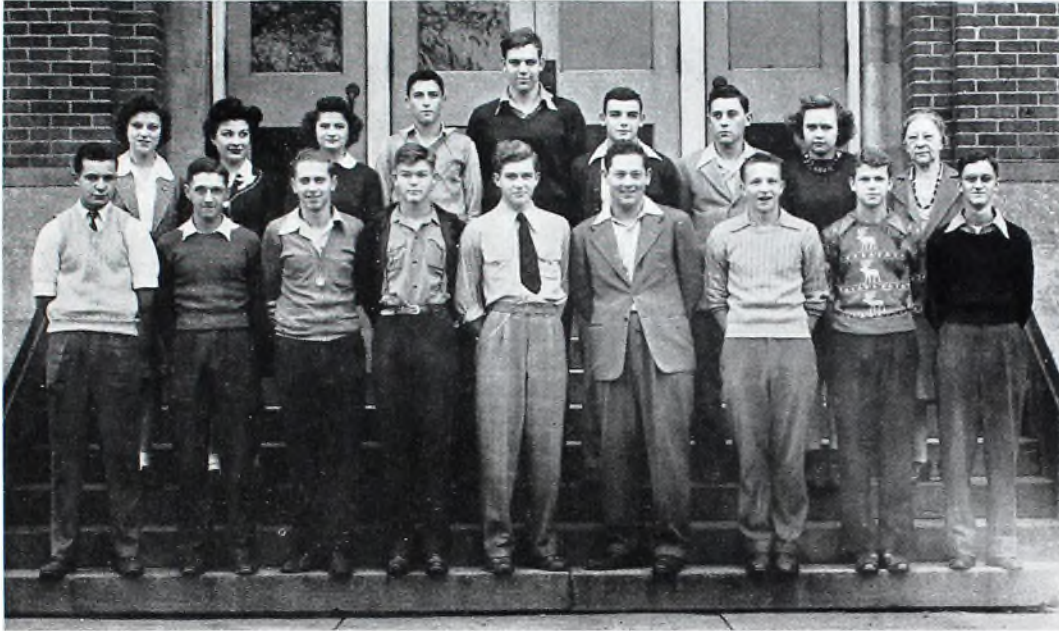
PHYLLIS SHULER	-----	<i>President</i>
HERMAN BERGMAN	-----	<i>Vice President</i>
EUGENIE TILTON	-----	<i>Treasurer</i>
FRANCES ANN ALDRIDGE	-----	<i>Secretary</i>
JULIANNE MYER	-----	<i>Song Director</i>
MISS RUTLEDGE	-----	<i>Adviser</i>



The Latin Club is an organization composed of students of the advanced class in Latin. At the monthly meetings the members participate in interesting business and social programs which concern the study of Latin. One of the interesting meetings of the year was that one at which the new members were formally initiated into the Club.

The Junior Classical League is a chapter of the national organization whose purpose is to further the study and interest in the classics. All members of the Latin Club are also members of this League. During the Ohio Latin Week the local league entertained all Latin students; the slogan was "All Roads Lead to Rome."

# German Club



Row 1—George Grubb, John Harstine, Jim Chercony, Dennis Rudy, Jim Reiser, Herman Bergman, Carl Richter, Dale Dunn, Dick Lindsay.

Row 2—Martha McNeely, Mary Cihon, Nancy Sever, Dick Briggs, Neal Burke, Tom Orr, Vernon Indermill, Mary McIntosh, Miss Felton.

Not in picture—Phyllis Engler, Jim Frederick, Kenneth Winters, and Homer Harris.

## SECOND SEMESTER MEMBERS

John Cole  
Martha Fishel  
Clarence Hanna

Bob Harris  
Eugene Lightel  
Ellen Passoni

Dorothy Robb  
Howard Schneider  
Evelyn Stiffler

## Officers

NEAL BURKE	-----	President
JOHN HARSTINE	-----	Vice President
NANCY SEVER	-----	Secretary
DENNIS RUDY	-----	Treasurer
MISS FELTON	-----	Adviser

The main purpose of the German Club is to promote the interest of its members in conversing in German. The German language will play a large part in our lives, not only in present day science but also in post-war peace.

It is the custom of the Club to hold annually a typically German Christmas party, at which all members participate in German games and singing.

# Spanish Club



Row 1—June Jacquette, Sara Patterson, Doris Wages, Marjorie Edie, Wilma Renneckar, Phyllis Storck, Ruth Lowmiller.

Row 2—Miss Wicks, Sue Ray, Jeanne Fritche, Elnora Lorenz, Bonnie Bailey, Sarah Sweasey, Kathryn Marsh, Betty Rapport.

Row 3—Norma Lee Hoover, Evelyn Swihart, Thelma Stevens, Ann Kirk, Catherine Wright.

## Officers

BETTY RAPPORT	-----	<i>President</i>
PHYLLIS STORCK	-----	<i>Vice President</i>
WILMA RENNECKAR	-----	<i>Secretary</i>
THELMA STEVENS	-----	<i>Treasurer</i>
MISS WICKS	-----	<i>Adviser</i>



"El Cerculo Espanol," the official name of the Spanish Club, is composed of students who are taking their second year of the language. The meetings, which are held once a month, are conducted entirely in Spanish.

The principal social affair of the year was a delightful party given near Christmas at the home of Ann Kirk.

# Honor Club



Row 1—Mildred Croxton, Julianne Myer, Iva McIlvaine, Margaret Kappeler, Ellen Passoni, Marjorie Schumacher, Janice Kuenzli, Jacqueline Knisely, Lois Harstine, Rose Slough.  
 Row 2—Delbert Perkins, Joanne Williams, Eugenie Tilton, Donna Graff, Marjorie Price, Lillian Sopinski, Charlene Wolf.  
 Row 3—Herman Bergman, Wilma Renneckar, Dennis Rudy, Richard Lindsay, Frances Aubihl, Dorothy Robb, Patricia Stemple.  
 Row 4—Jeanne Fritche, John Harstine, Mary Jane Bair, Jane Reiser, Jane Boyce, June Simmers.  
 Row 5—Sara Graff, Phyllis Shuler, Rhoda Light, Wilma Paulus, Vera Bonvechio, Frances Aldridge, John Zien, Elvin Hannahs.  
 Row 6—Miss Felton, Charles Meyer, Earl Fisher, Earl Paulus, Neal Burke, Martha McNeely, Nancy Sever, Dorothy Thomas.  
 Sitting—John Cole, James Patrick.  
 Not in picture—David Maurer, Betty Rapport, Robert Mcnapace, Anna Wyatt, Norma Kuenzli.

## Officers

NEAL BURKE	-----	President
JAMES PATRICK	-----	Vice President
JOANNE WILLIAMS	-----	Secretary
MISS FELTON, MISS HELMICK, MR. WILLIAMS	-----	Advisers

The Honor Club is an organization for the students who find it worth while to attain good records in their studies.

Those who have acquired at least two A's and two B's or three A's and two B's for one semester are classified as associate members; while those who have retained such grades for three semesters become active members. Students who have met the requirements are classified as life members.

Each year the members of this Club are entertained at the banquet given by the College Club.

# The Hi-Y



Row 1—Vernon Indermill.

Row 2—Robert Harris, Dale Dunn, James Reiser, Mr. Howey.

Row 3—Carl Richter, Tom Orr, Richard Geib, James Patrick, Roland Platz.

Row 4—John Cole, Eugene Surbey, Jack Mason, Lawrence Fitzpatrick, Richard Gray, James Cherony.

Row 5—Sam Urfer, Stanley Fisher, Robert McGlone, Robert Bair, Edward Ohliger.

Row 6—Robert Harris, James Frederick, Neal Burke, William Quicksall, Richard Briggs.

## Officers

DALE DUNN	-----	<i>President</i>
ROBERT E. HARRIS	-----	<i>Vice President</i>
NEAL BURKE	-----	<i>Secretary</i>
ED OHLIGER	-----	<i>Treasurer</i>
MR. HOWEY	-----	<i>Adviser</i>



The New Philadelphia Hi-Y was organized in the year of 1922. It has been an active club ever since that time.

Its purpose is to create, maintain, and extend high standards of Christian character throughout the school and the community. The club participates in discussions and hears speakers on life's problems.

The members, as they have done in previous years, sold programs at the football games last fall.

# The Girl Reserve Cabinet



Row 1—Coralene Kaylor, Sara Graff, Julianne Myer, Wilma Renneckar, Kathryn Marsh.  
 Row 2—Ann Kirk, Jeanne Fritche, Evelyn Stiffler, Miss Wicks.  
 Row 3—Jane Patrick and Mary Buchanan.



## Officers

SARA GRAFF	President
EVELYN STIFFLER	Vice President
CORALENE KAYLOR	Treasurer
JEANNE FRITCHE	Secretary
WILMA RENNECKAR	Pianist
KATHRYN MARSH	Song Leader
ANN KIRK	Dramatic Triangle
MARY BUCHANAN	Charm and Culture Triangle
EVELYN STIFFLER	Tips to Teens Triangle
JANE PATRICK	Handicraft Triangle
JULIANNE MYER	Music-Arts Triangle
MRS. BRENTON KIRK	President of Women's Council
MISS WICKS	Adviser

# Dramatic Triangle



Row 1—Jeanne Schindler, Ruth Lowmiller, Virginia Enold, Barbara Mohney, Ruth Walters, June Simmers, Patricia Stemple.

Row 2—Betty Halter, Margaret Kappeler, Frances Aldridge, Dorothy Thomas, Joan Waddington, Norma Myers, Vera Bonvechio.

Row 3—Noela Bivenour, Pauline Tolotri, Martha Fishel, Charlotte Mowrer, Joanne Shaw, Jane Boyce, Lila Myers, Mildred Glazier.

Row 4—Miss Warner, Phyllis Shuler, Marjorie Marsh, Phyllis Storck, Betty Anne Fisher, Janice Kuenzli, Marjorie Schumacher, Doris Larkin.

Row 5—Patricia Allen, Joanne Ellwood, Bonnie Morris, Mary McIntosh, Ann Kirk, Doris DeArment, Norma Lee Hoover.

Not in picture—Donna Mason and Beverly McCoy.

## Officers

ANN KIRK	-----	Leader
RUTH WALTERS	-----	Secretary
MISS WARNER	-----	Adviser
WOMEN'S COUNCIL	-----	Mrs. W. V. Buchanan, Mrs. Frank McIntosh, Mrs. H. A. Coleman, Mrs. Paul Hoerneman.

This year the Dramatic Triangle had discussions on acting and the mechanism behind the scenes.

The girls presented two plays: for the Fathers' party they gave "The Girl from Brazil," and for the Mothers' party they gave "What Are We Going to Wear?" They were also responsible for several assembly programs throughout the year. At their last meeting of the year they enjoyed a book review.

# Handicraft Triangle



Row 1—Janet Hanson, Nina Hinson, Dorothy Swinderman, Beverly Beans, Rhoda Light, Joanne McKnight, Norma Martin, Barbara Cope.

Row 2—Betty Byers, Alice Watkins, Vanessa Murray, Lois Harstine, Thelma Shott, Twila Knisely, Margaret Schneider, Dorothy Garner.

Row 3—Dorothy Lamb, June Jacquette, Jeanne Fritche, Jane Phillips, Ruth Nolan, Lillian Sopinski, Patricia Newell.

Row 4—Elizabeth Miller, Jeanne Kappeler, Betty Rapport, Mary Emerson, Bobbie Edwards, Shirley Ross, Nancy Sever.

Row 5—Miss Myer, Joan McCarty, Jane Reiser, Jane Patrick, Norma Kuenzli, Sara Foster.

Not in picture—Marie Arend, Donna Beans, Ethel Kerper, Eleanor Lightell, Mary Maughan, Mary Nicola.

## Officers

JANE PATRICK	-----	Leader
VANESSA MURRAY	-----	Secretary
MISS MYER	-----	Adviser
WOMEN'S COUNCIL	-----	Mrs. J. B. Rudy, Mrs. John W. Evans, Mrs. R. J. Foster, Mrs. R. M. Kaylor, and Mrs. Carl Wad- dington.

In normal times the Handicraft Triangle makes a study of the crafts of America and foreign countries, and the girls spend some time making things for themselves. But for the past two years their creative ability has been put to making scrap books for the boys at Fletcher General Hospital.

# Charm and Culture Triangle



Row 1—Jayne Crites, Leonia Zimmerman, Faith Parsons, Majel Swisshelm, Colleen Williams, Betty Lou Sherrets, Charlene Wolf.

Row 2—Marie Herron, Sue Ray, Mary Jane Bair, Shirley Mitchell, Miss Rutledge, Judy Peach.

Row 3—Betty Parker, Phyllis Kaltenbaugh, Jean Fowler, Wilma White, June Carpenter, Mary Sherer, Mary Buchanan.

Row 4—Mary Ella Diefenbacher, Catherine Wright, Marian Walters, Glorine Swisshelm, Mary Garner, Doris Brown.

Row 5—Leah Coutts, Mary Lou McCollough, Helen Phillips, Cora True, Erma Bond, Ellen Passoni.

Not in picture—Virginia Ball, Agnes Breehl, Helen Duncan, Regina Libertore, Margaret Meissner, Shirley Zucher, Ruth Patrick.

## Officers

MARY BUCHANAN	-----	Leader
JEAN FOWLER	-----	Secretary
MISS RUTLEDGE	-----	Adviser
WOMEN'S COUNCIL	---	Mrs. George Williams, Mrs. E. H. Tilton, Mrs. Charles Fritche, Mrs. Carl Williams.

This year, with so many speakers busy in war work, the Charm and Culture Triangle has striven to give most of its own programs. It has particularly stressed the cultural side of the girls, and the programs have consisted of plays and group discussions.

# Tips-to-Teens Triangle



Row 1—Frances Barnish, Anna Bonifant, Doris Wages, Jacqueline Knisely, Margie Edie, Marjorie Price, Rose Slough.

Row 2—Dorothy Barnish, Joanne Maus, Mary Ann Limbach, Norma Sweany, Virginia Ewbank, Nancy Brown, Miss Beaber.

Row 3—Lillian Mennom, Marjorie Angel, Janice Arnold, Nalta Dotts, Iva McIlvaine, Frieda Swinderman, Ann Schuepbach, Dorothy Robb.

Row 4—Cecil Stocker, Lois Kinsey, Virginia Bucher, Elnora Lorenz, Mary Diefenbacher, Donna Graff, Kathryn Kinsey, Evelyn Stiffler.

Not in picture—Pauline Yost, Virginia Dragich.

## Officers

EVELYN STIFFLER -----Leader

MARJORIE PRICE -----Secretary

MISS BEABER -----Adviser

WOMEN'S COUNCIL-----Mrs. Simon Kinsey, Mrs. R. M. Stiffler,  
Mrs. John McCullough, Mrs. V. R. Marsh, Mrs. Russell Coutts.

The Tips-to-Teens Triangle has aimed to help its members solve the problems of the teen-age girl. Among the various subjects discussed have been health, appearance, and professions.

Round table discussions were held on correct etiquette, for young people today must realize the importance of good manners at home, in public, and at school.

# Music-Arts Triangle



Row 1—Julianne Myer.

Row 2—Mildred Croxton, Jacqueline Williams, Jerry Hassin, Wilma Rennekar.

Row 3—Sara Graff, Ann Weuthrick, Sarah Sweasey, Helen Kaderly, Lucy Everett, Coralene Kaylor.

Row 4—Miss Shaw, Mary Nina Congleton, Kathryn Marsh, Marjorie Bucher, Joanne Williams, Eugenie Tilton, Treva Graff.

Not in picture—Betty Rapport.

## Officers

JULIANNE MYER -----Leader

EUGENIE TILTON -----Secretary

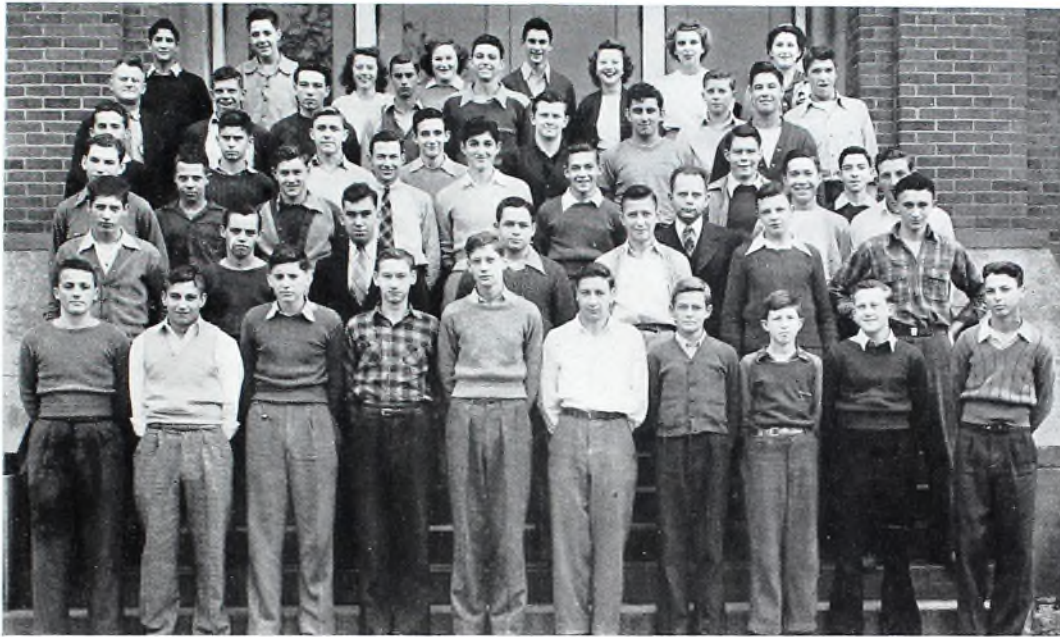
MISS SHAW -----Adviser

WOMEN'S COUNCIL-----Mrs. James Patrick, Miss Edna Felton,  
Mrs. John Marsh, and Mrs. Samuel Warr.



The Music-Arts Triangle's purpose for the year was to give the members a more complete knowledge of the field of music and of arts. The triangle conducted many interesting programs under the fine leadership of Miss Shaw.

# Industrial Arts Club



- Row 1—Richard Zaychek, Edward Warmack, Wayne Kiser, Ellwood Demuth, Eugene Anderson, William Hewitt, Donald Graff, John Grages, Jack Davis, Ray Hodge.
- Row 2—Joe Gribble, Junior Ickes, James Fishel, George Reip, Gerald Harstine, James Allman, Glen Marshall.
- Row 3—Andrew Cheslock, Jason Stephan, Dale McClelland, Lawrence Fitzpatrick, Richard Casper, William Beaber, Mr. Pugh, Donald Rutledge, Carl Hollingsworth, Carl Mercer, Jack Mason.
- Row 4—James Avon, John Spittle, Gerald Clark, Neil Laughlin, Eugene Yosick, Dean Albaugh, Joe Vielmetti.
- Row 5—Mr. Glover, James Waltz, Charles Harris, James West, Donald Mathias, Gloria Pearch, Edward Pollock, Ray Horn.
- Row 6—Edward Pongratz, Jack Gunther, Jayne Crites, Betty Halter, Byron Ball, Arlene Kropp, Evelyn Swihart.
- Not in picture—Thelma Bucher, Charles Burtcher, Howard Byers, Doris Carpenter, Juanita Collar, Betty Dudley, William Duncan, Virginia Fisher, Eleanor Lightell, Evelyn May, Lilah Myers, Donna Newton, Alice Paloncy, Della Reela, Clementine Starinieri, Nick Strimbu, Tom Strimbu, Sara Ulrich, Glen Winkler.

## Officers

JACK MASON	-----	President
JOE VIELMETTI	-----	Vice President
GLEN MARSHALL	-----	Secretary
MR. GLOVER AND MR. PUGH	-----	Advisers

This club was organized so that students might have an opportunity to work in their chosen field as a vocation or avocation, also that the students might enjoy social activities among their own groupings. It has been of very high service to our school, the Club, and our country.

The projects completed this year are as follows: twelve library tables for our new high school library, twelve writing tables, and twenty-four comfort trays for Fletcher General Hospital at Cambridge. The members of the club conducted the school's scrap drive which was a great help to Uncle Sam's war effort.

At Christmas time the club enjoyed a party with an exchange of gifts, dancing, and refreshments.

## Assembly Committee



Row 1—Charles Meyer, Miss Warner, Nalta Dotts, Evelyn Stiffler, Twila Kniseiy, Jeanne Fritche, Charles Cronebaugh.

Row 2—Pauline To'otti, Dorothy Robb, Martha Angel, Lois Kinsey, Nancy Sever, Catherine Wright.

Row 3—John Cole, Dale Dunn, Jerry Winters, Richard Lindsay, Lawrence Fitzpatrick, George Patterson.

Not in picture—Mary Buchanan, Donna Graff, and Dan Miskimen.

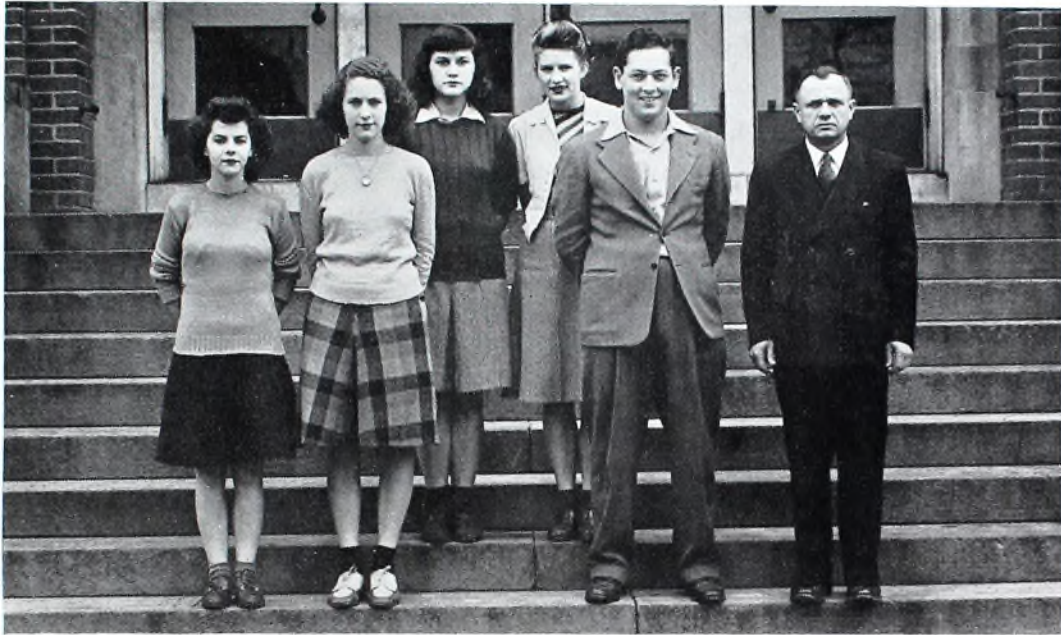


The purpose of the Assembly Committee is to plan assemblies that the students will enjoy and to present the talent of the school.

This Assembly Committee is made up of one representative from each homeroom under the leadership of Miss Warner.

Four special assemblies with professional entertainers were offered to the students for thirty cents. These four assemblies were Jack Rank's presentation of "Macbeth," the Alexander Novelty Trio, Frye the Magician, and Elliott's Liquid Air Demonstration. This is the first year for the Assembly Committee, and the enthusiasm of the students proves that their work is appreciated.

## Debate Squad



Betty Lou Sherrets, Mary Nina Congleton, Betty Rapport, Martha Angel,  
Herman Bergman, Mr. Bender

Not in picture—Jane Boyce, Virginia Enold, Jim Rapport, William Quicksall,  
Charlene Wolf.



The subject for debate this year was "Resolved: That the United States should join in reconstituting the League of Nations." Due to the difficulties of travelling, the squad entered only three tournaments this year. All of them were at Canton.

In the final District Tournament of the State Speech League on February 19 New Philadelphia just missed going to Columbus by losing the last debate to Canton McKinley by a 2-1 decision. Canton went to Columbus and won second place in the state. Marietta won the Championship. Jane Boyce, Betty Rapport, Herman Bergman and Jim Rapport represented N. P. H. S. in the District Tournament.

## *Candy Stand Girls*



Colleen Williams, Sarah Patterson, Sara Graff, Margaret Meissner  
Not in picture—Doris Larkin.



The Candy Stand is one of the sources of income for our Delphian. The girls chosen for this work contribute their time and efforts without reward. Margaret Meissner and Colleen Williams worked hard this year to keep us supplied with as much gum and candy as we wanted to buy.



## School Library Staff



Lillian Sopinski, Iva McIlvaine, Eileen Kail, Nancy Sever, Helen Kaderly, Wilma White, Virginia Bucher, Miss Bowditch, Elizabeth Miller, Shirley Mitchell, Shirley Ross.

Not in picture—Lois Harstine.



Something new has been added! October, 1943, marked the opening of our high school library. An attitude of justice and fair play is the keynote of the service rendered to faculty and students. Our library staff is composed of eleven senior high girls, who, as volunteer workers, spend one or more free periods each day in the library performing simple tasks under the supervision of the librarian. Since all students must educate themselves, there is no spot better adapted to self-education than the library.

# Traffic Patrol



Joe Cheslock, William Tabernack, Darrell Cope

MR. STOUGHTON -----*Manager*



Few students realize the important service that these boys give to our school. Rain or shine, they direct traffic and help students to cross the busy streets both at noon and in the evening.

# *Delphian and Central News Typists*



Row 1—Ella Ulrich, Janice Hiller, Nina Hinson, Therma Mae Pease.

Row 2—Sarah Ulrich, Alice Paloney, Audrey Waldron.

Row 3—Elnora Lorenz, Margaret Meissner, Pauline Tolotti, Mary Jane Bair.

Not in picture—Vera Jane Perry.



The sacrifice and efforts of the typists' time and effort aid greatly in making the Delphian possible, for the Staff depends upon them to get the copy ready for the printer. Without their able assistance there would be no Delphian.

The work of the Central News typists is similar to that of the Delphian typists. They must tabulate the material and cut the stencil. Theirs is not a spectacular job, but it is essential.

# Central News Staff



Row 1—Robert Singhaus, Mildred Croxton, Sarah Lou Patterson, Wilma White, Ella Ulrich, Miss Shumaker.

Row 2—Harold Thomas, Jane Boyce, Betty Rapport, James Patrick, Evelyn Stiffler, Dorothy Robb.

Row 3—Dennis Rudy, James Rapport, Robert Harris, Neal Burke, John Cole, Stanley Fisher.

*Editors*-----Neal Burke, Betty Rapport, and Evelyn Stiffler  
*Sports Editor* -----Robert Harris  
*Club Editor* -----Sarah Lou Patterson  
*Column Editor* -----James Patrick  
*Art Editors* -----Mildred Croxton and Harold Thomas  
*Reporters* -----Dorothy Robb, John Cole, and James Rapport  
*Business Manager* -----Stanley Fisher  
*Assistant* -----Robert Singhaus  
*Circulation Manager* -----Dennis Rudy  
*Assistant* -----Jane Boyce  
*Production Managers*-----Mary Fischio, Clementine Starinieri  
Lilah Myers, Wilma White, Ella Ulrich, and Mary Nicola  
*Typists*---Nina Hinson, Janice Hiller, Vera Perry, Elnora Lorenz,  
Alice Paloney, Ella Ulrich, Sarah Ulrich, Therma Pease,  
and Audrey Waldron.  
*Adviser* -----Miss Shumaker

The Central News aims to give us a complete and accurate picture of life in N. P. H. S. The Staff meets every day and publishes an edition every three weeks. It also keeps the public informed about the school's activities by publishing a column in the *Daily Times* once every two weeks.

In accordance with its custom in past years, the Staff has sponsored a number of worthy activities throughout the year. Its chief one was raising money to buy a soda fountain for the city's Youth Center.

# Delphian Staff



Joanne Williams, Norma Gene Thomas, Miss Baker, Phyllis Storck, Delbert Perkins, Dale Dunn, Clarence Hanna, Jane Patrick, James Reiser, Phyllis Shuler, Dorothy Thomas, Sarah Graff, Julianne Myer, Charles Meyer.

Not in picture—Janet Hanson.

Jane Patrick	Editor-in-Chief
Dale Dunn	Business Manager
Phyllis Shuler	Literary Editor
Delbert Perkins	Photograph Editor
Phyllis Storck	Art Editor
James Reiser	Sports Editor
Sara Graff	Circulation Manager
Dorothy Thomas	Assistant Editor
Julianne Myer	Assistant Business Manager
Joanne Williams	Assistant Literary Editor
Janet Hanson	Assistant Photograph Editor
Norma Gene Thomas	Assistant Art Editor
Clarence Hanna	Assistant Sports Editor
Charles Meyer	Assistant Circulation Manager
Miss Baker, Miss Barton, Miss Beaber, Mr. Williams,	Faculty Advisers

Anytime near a deadline date, an uninitiated observer would be bewildered by what goes on in Miss Baker's room. In the back of the room he sees several individuals staring out the window, waiting for a brainstorm to blow their way. He sees sales tax stamps everywhere. They are the Staff's "pet peeve." He never finds money scattered around; the Delphian has a hard enough time finding it anywhere. Someone is always dashing in and out of the room. Sighs of relief fill the air when the bell rings—saved by the bell!

The editor assigns write-ups to everybody and nearly has heart failure until they come in. They usually appear two minutes before the dummy leaves for the printer's shop. The biggest day of the year is the day the Delphian comes out. Then the whole Staff, especially the editor, slips into a coma.

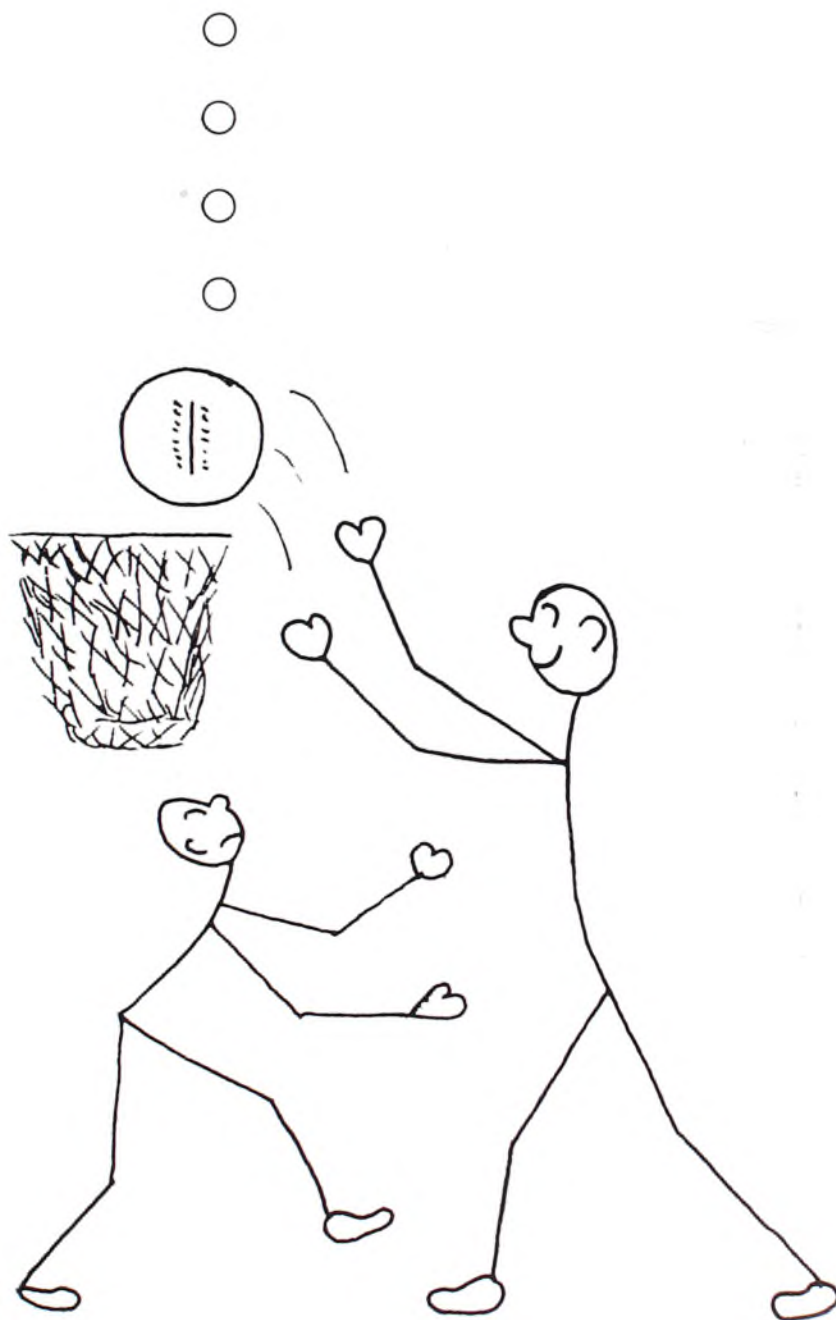
PEEKS *at* FREAKS

1—Admiring his letter? . . . 2—Psst., What time is it? . . . 3—Passing out Defense Stamps . . . 4—Our daily lecture . . . 5—Gruesome two-some . . . 6—Taken off guard! . . . 7—“Save the carbon paper.” . . . 8—Here’s where we study? . . . 9—A grin that wins . . . 10—Acetylene torch helps in scrap drive . . . 11—Look what’s on our doorstep . . . 12—Varga girls of 1950 . . . 13—Something fishy . . . 14—Day-dreaming! . . . 15—Industrial genius . . . 16—They bring in the scrap . . . 17—Romeo and Juliets . . . 18—Goodness, funnies in study hall? . . . 19—What big eyes you’ve got . . . 20—Man to man (?) talk . . . 21—A bunch has lunch.





# ATHLETICS





This was Coach Kidd's first year as assistant coach with the varsity. He was concerned mainly with the line, and he certainly developed an aggressive hard-charging forward wall. Bill was liked and respected by the entire team.

## *The Coaches*

In his six years' experience as coach in New Philadelphia Mr. Hoerneman has spurred the Quakers on to one victory after another. His emphasis on training rules and hours of practice has rewarded us with a brilliant and successful season.



# Managers

## FOOTBALL

These are the boys who do the dirty work and like it. Taking care of equipment and keeping the boys in tiptop condition are their specialties.



MR. HOWEY

## BASKETBALL

The squirts of the squad, averaging five feet two, did a great deal of work for their size. This is an inglorious job, and these boys performed it well.



Frank Ginnetti      Nelson Myer  
Jim Patrick

## FACULTY MANAGER

Mr. Howey became our faculty manager when the United States claimed Mr. Steffen. He has done a swell job in performing the numerous duties of this position.



Ralph Sherer      John Wright  
John Goudy      Fred Ricketts



Row 1—Joe Gribble, Clarence Hanna, Lyle Rogers, Marvin Beans, Carl Richter, Tom Orr, William Kniesner, Bob McMillen, Stanley Fisher, Bob Harris.  
Row 2—William Valentine, Edward Warmack, Roland Platz, Paul Miller, George Reip, William Beaber, Raymond Strickmaker, Richard Geib.  
Row 3—Neal Burke, Homer Harris, Jack Stoneman, Edward Patterson, Lloyd Johnson, Orval Stevens, Don Gowan, John Fagley, Andrew Cheslock.  
Row 4—Edward Strasizar, Paul Phipps, Leon Yarnell, Burton Beaber, Junior Rufenacht, Jim Rapport, Richard Valentine, Jack Gribble.  
Row 5—Jack Frew, Carlton Long, Bill Pearch, Tom Murphy, Eugene Walters, Calvin Day.

### SEASON OF 1943

September 17

CAMBRIDGE 18

Away

PHILA. 20

Quakers get off to flying start in the opening game of the season with Harris's returning the kick-off eighty-five yards in the opening seconds of the game. Brownies bounce back to score three tallies, but Hanna's two conversions prove margin of victory.

September 24

DENNISON 0

Home

PHILA. 33

Speedy Quakers gain revenge over Railroaders, highlighted by fifty-yard scoring jaunt when Rogers snags aerial. Gribble scores when McMillen blocks opponents' punt. Quakers show class before local fans in first home appearance of the year.

October 1

NEWCOMERTOWN 7

Home

PHILA. 93

Red and Black completely outplay stubborn Trojans. Richter dashes thirty-five yards with intercepted pass to score. Hoerneman uses regulars only two periods.

October 8

EAST LIVERPOOL 0

Home

PHILA. 0

Stubborn Quakers refuse to bow to giant Potters. Hard charging Quaker line repels Potter's touchdown marches in shadow of our own goal post. Outweighed but not out-fought, Phila's record still unmarred by defeat.

October 15

WOOSTER 0

Away

PHILA. 9

Splashing over a rain-soaked field, the Phils and the Wooster Generals battle to a nothing-nothing tie. The Red and Black are held constantly in their own territory by great Wooster punting.

October 22

AKRON KENMORE 0

Home

PHILA 18

Fighting Quakers roll over Akron City Champs for third victory. Locals show marked improvement in all departments of play. "Goose" Kniesner, Quaker tackle, snatches Cardinal fumble and sprints sixty yards to score.

October 30

BELLAIRE 7

Away

PHILA 8

Vastly under-rated Big Reds give locals stiff battle on rain-soaked field. Bellaire eleven scores in early minutes of game, but Quakers retaliate with safety late in first quarter. Eighty-yard touchdown drive in fourth period nets Red and Black margin of victory.

November 6

UHRICHSVILLE 0

Away

PHILA 20

Hard-hitting Quakers crush undefeated Tigers before capacity crowd. Powerful Philly line smothers opponents' vaunted attack. Fleet-footed Quaker backs scamper off-tackle and around ends for long gains. Bengal passing offensive in final quarters fails to score.

November 13

BARBERTON 13

Home

PHILA 6

Local's dream of undefeated season shattered by Barberton powerhouse. Magics stick to straight football to annex touchdown in second quarter. Blocked punt gives Barberton second six points. Undaunted Phils come back to score late in final quarter.

November 25

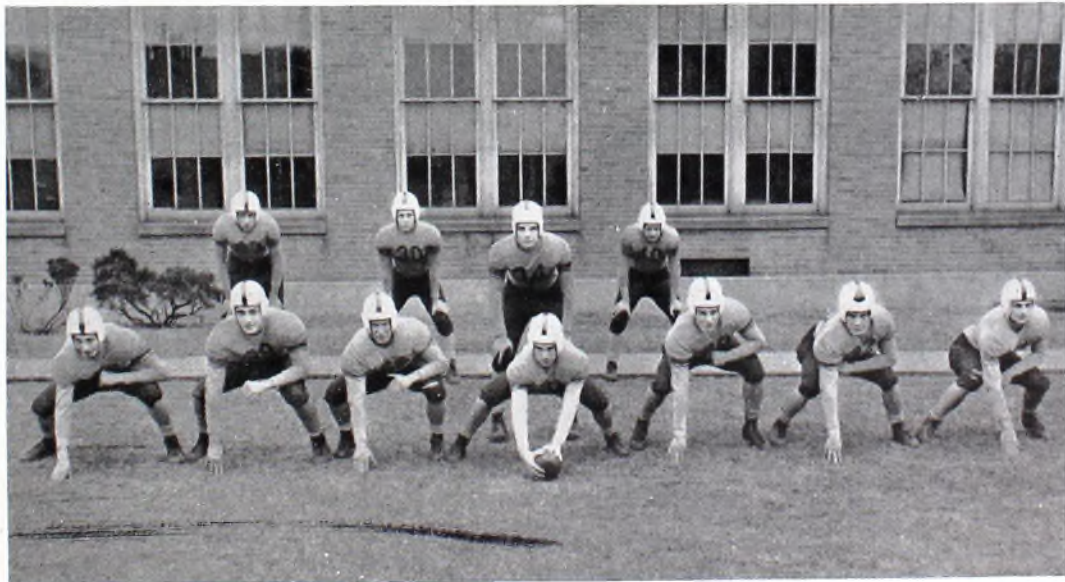
DOVER 0

Away

PHILA 20

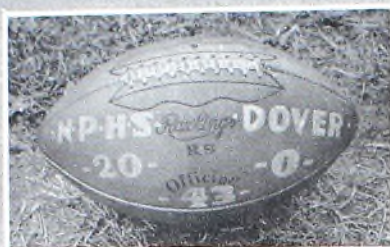
Quakers again County Champs when Tornadoes relinquish title after four-year reign. Five thousand excited fans see lightning action when Richter streaks 70 yards and laterals to Harris to score in the final seconds of first quarter. Tornadoes are bewildered by Quakers' blinding speed, vicious tackling, and determined will for revenge. Beans, midget Quaker guard, plays brilliant defensive game.

## THE FIRST TEAM

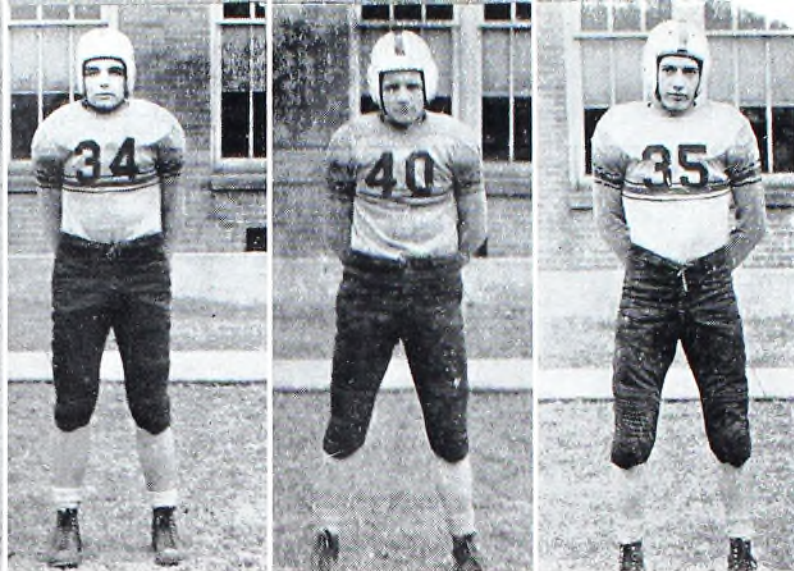


Line—Joe Gribble, Stanley Fisher, Marvin Beans, Bob McMillen, Clarence Hanna, William Kniesner, Lyle Rogers.  
Backfield—William Valentine, Bob Harris, Tom Orr, Carl Richter.

# FOOTBALL



1943



TOM ORR, *Co-captain* - - - - - *Quarterback*

Tom did a great job in a position to which glory is not attributed. He was our spark plug when the going got tough, and his efficient blocking kept our offensive rolling.

CARL RICHTER, *Co-captain* - - - - - *Halfback*

"Butch" was our speedy little halfback whose broken field running was responsible for many Phila tallies. He was always in there fighting, and his spirit and aggressiveness should prove an inspiration to future Quaker gridders.

JOE GRIBBLE - - - - - *End*

Joe specialized in cracking opponents' end sweeps and in snaring passes for many large gains. This is Joe's last year, and it will be hard to find another fine end like him.

MARVIN BEANS - - - - - *Guard*

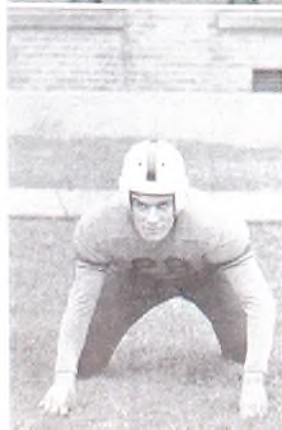
"Beanie" was one of the few regulars left from last year's varsity, and his powerful defensive charging stopped many enemy line thrusts. He was given honorable mention on the International News Service All-Ohio Squad.

BOB HARRIS - - - - - *Fullback*

Bob played his second year with the varsity and contributed much toward our hard driving backfield, breaking through the opponents' lines for many long gains. He was awarded honorable mention on the United Press All-Ohio Team.

CLARENCE HANNA - - - - - *Guard*

Hanna was another one of the few veterans left to carry on this year, and much praise is due him for his offensive blocking. He received honorable mention on the Associated Press All-Ohio Team.



WILLIAM KNIESNER - - - - - Tackle

"Goose," one of our best liked gridgers, was really a defensive tower of strength. He continually broke through the enemy line to spill the opponent blocks for great losses.

LYLE ROGERS - - - - - End

"Rog" was only a sophomore this year, but he did a great job with our small but mighty squad. We look forward to his power in our line next year.

STANLEY FISHER - - - - - Tackle

"Stan" was one of our quiet boys who did his job well. He continually broke through the opponents' line to demoralize enemy backs. Much is expected of "Stan" next year.

BOB McMILLEN - - - - - Center

"Mick" held another of the unheralded positions on the squad. He was our reliable center, and without his steady work at this position our offense would have slowed to a standstill.

WILLIAM VALENTINE - - - - - Halfback

"Bill" was our fleet-footed wing back, and his excessive speed was of great value to our reverse attack. His jarring tackles stopped many an enemy advance.

EDWARD WARMACK - - - - - Halfback

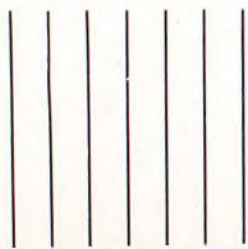
"Eddie" began the season as a regular, but, due to an old knee injury, was forced to the sideline during midseason. Whenever he was in there, he always gave his very best.

RICHARD GEIB - - - - - End

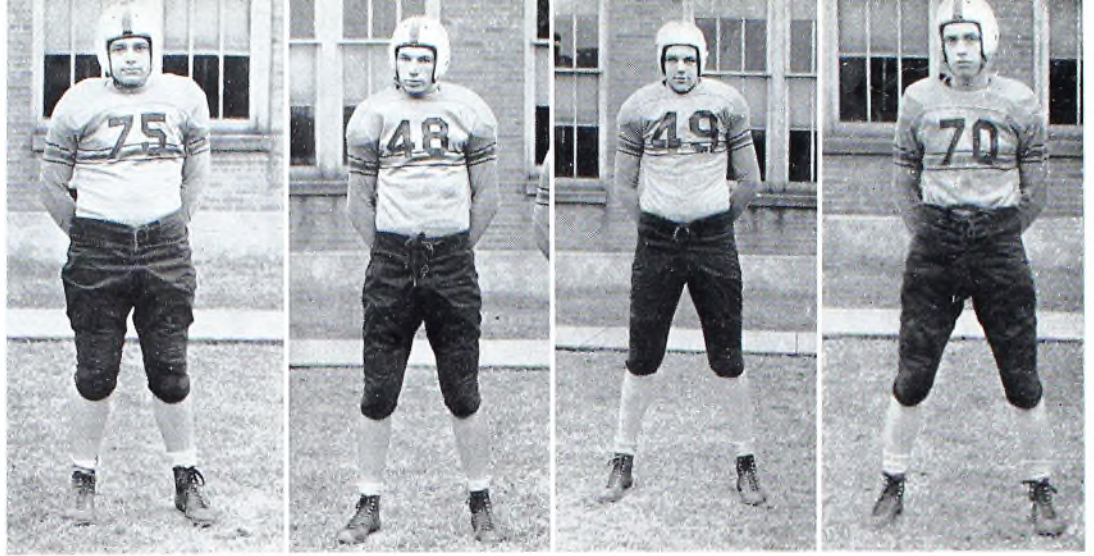
"Rich," although this was his first year on the gridiron, did a remarkable job at his end position. He is slated for a first string position next year.



1943



# 1943



GEORGE REIP - - - - - *Tackle*

George was another one of the squad of seniors who gave much toward our successful season. We regret that this is his last season with the Quakers.

ANDREW CHESLOCK - - - - - *Tackle*

"Andy" was one of our most reliable substitutes this year, and he deserves much credit for his fighting spirit.

NEAL BURKE - - - - - *End*

"Stretch" threw mortal terror into opponents' elevens. Snaring lofty aerials and punting were his specialties, and he was responsible for long gains.

PAUL MILLER - - - - - *Halfback*

"Mike" was one of the fastest backfield men on the squad. He was a spunky gridder who gave his best toward our victories.

HOMER HARRIS - - - - - *Guard*

Although Homer saw little action this year, his fighting spirit on the practice field inspired his teammates to victories on the gridiron.

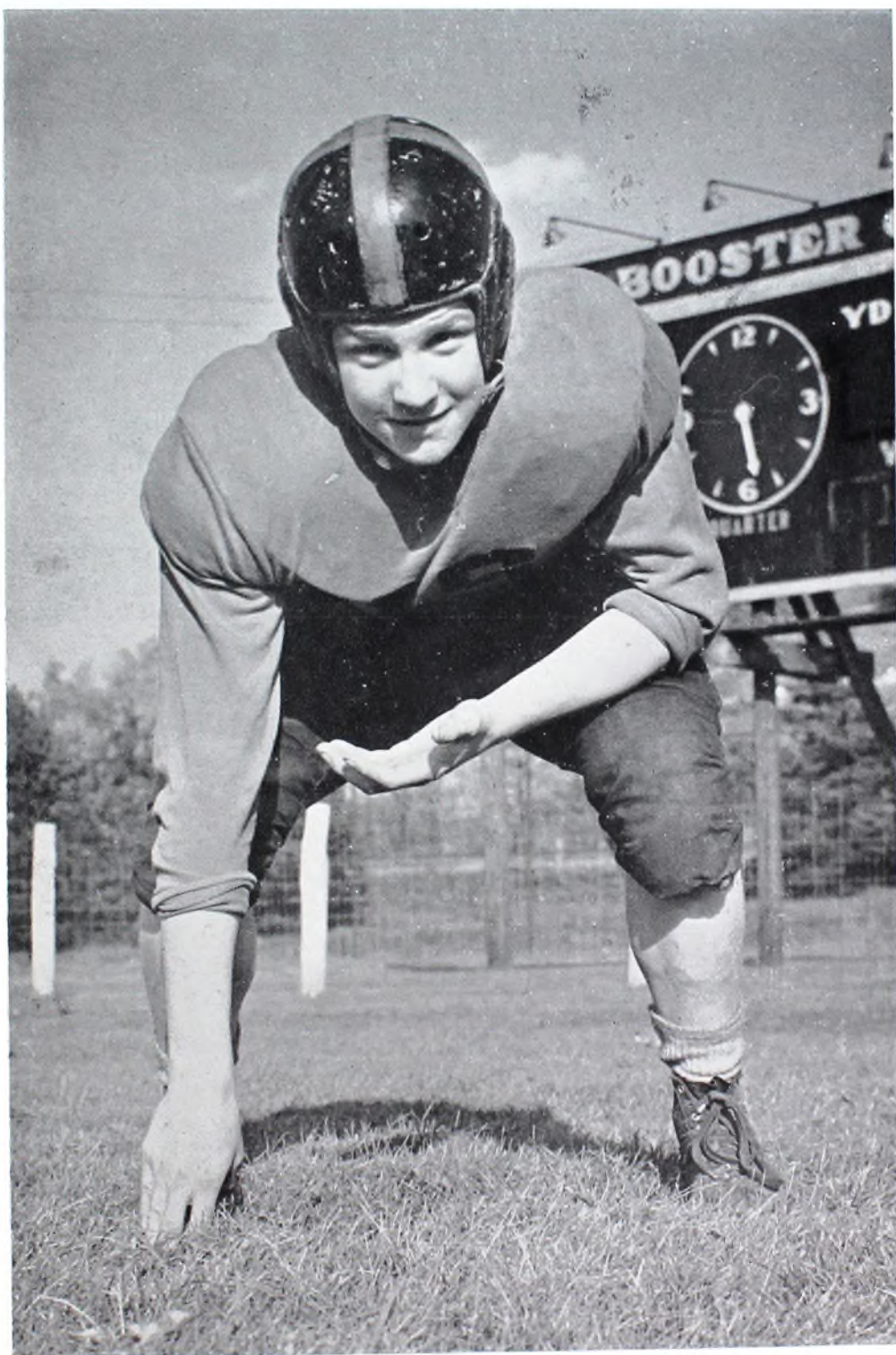
WILLIAM BEABER - - - - - *Halfback*

"Bill" had tough luck at the start of the season when he suffered a leg injury, and as a result of this, he saw little action. The end of the season saw him again in action.

RAYMOND STRICKMAKER - - - - - *Fullback*

"Ray" was a junior this year and our hard-hitting fullback. His fine passing and running mark him as an important cog in our backfield next year.

# In Memoriam



CARL RICHTER  
MARCH 1, 1944

Carl was loved and respected by all his fellow students, and he will live in our memory forever.

# Varsity Basketball Squad



Row 1—Roland Platz, Bob Harris, Richard Geib, Neal Burke, Edward Ohliger, Tom Orr, Edward Warmack.

Row 2—Marvin Beans, Ray Strickmaker, Clarence Hanna, Stanley Fisher, Jack Stoneman, William Valentine, William Kniesner.

## The Season

Inexperienced Quakers Top Bolivar 41-30

Opening the season with a County Class "B" opponent, Quakers show promising abilities for the future.

Quakers Rout Zanesville Blue Devils 46-17

Showing great improvement over their opening performance, Phils display great defensive ability on opponents' court.

Phils Blast Dennison Five 52-31

Locals remove first obstacle on way to County title. Red and Black nab early lead and coast to third victory.

Quakers Capture Fourth Straight Victory From Newcomerstown 54-28

Phils display too much power for down-county opponents. Trojans show plenty of scrap but trail entire contest.

Huntington, W. Va., Hands Locals First Defeat 37-34

"Johnny" Brickels's team snaps Quakers' winning streak with thrilling overtime victory. Locals handicapped by loss of four starters on fouls.

Phils Romp Over Canton Lincoln 53-30

Quakers bounce back with a vengeance from initial defeat to down Lincoln Lions. Contest marred by unusually rough play.

Quakers Top Wooster Generals 34-17

Locals exhibit poorest form of year in annexing sixth victory. Listless tilt featured by inaccurate shooting of both teams.

#### Quakers Blast Dover Crimson 48-24

In a complete reversal of form Quakers put on their best performance of the year. Local zone allows the visitors few good shots, while our boys score almost at will.

#### Mansfield Tigers Blast Quakers 48-33

Quakers absorb sound drubbing from fast breaking Tigers on opponents' court. Locals badly off form, trail entire contest.

#### Massillon Powerhouse Downs Quakers 51-38

Rangy Massillon five displays too much power for locals. Red and Black battle gamely against overwhelming odds.

#### Erring Quakers Edged by East Liverpool 44-38

Quakers lose third straight to tough Potter combine. Locals' rally in list period falls short of victory.

#### Quakers Top Barnesville Five 49-36

Locals return to victory path by defeating rangy Barnesville five. Quaker offense shows surprising strength in eighth victory of season.

#### Quakers Edge Uhrichsville Tigers 25-20

Handicapped by opponents' small court, locals have a difficult time downing their traditional rivals. Quakers lead throughout contest, but score was always close.

#### Quakers Down Barnesville 50-41

Quakers notch their tenth victory of season by overcoming Barnesville Hilltoppers. Game was featured by high scoring of both quintets.

#### Quakers Down Crimson Rivals 38-29

Quakers overcome three-year jinx by downing Dover Crimson twice in succession. Locals miss numerous shots, but still pack enough power to spill Tornados.

#### Quakers Edge Newcomerstown Trojans 43-41

Locals clinch first county championship in three years by edging fighting Trojans. Opponents' rally in final period comes within two points of victory.

#### Locals Spill Highly Touted Chaney Passers 39-30

Quakers score brilliant victory over Youngstown five. Red and Black show class in second half, after trailing during first two periods.

#### Quakers Reach Perfection to Topple Undefeated Canton Timken 51-46

Quakers score greatest upset of year by downing mighty Canton Timken. Locals trail entire first half, but play inspired ball in final quarter to scale heights of victory.

#### High-powered Quakers Blast Uhrichsville 63-37

Local scoring machine burns hoops to roll up highest score of season. Red and Black second team takes over in final period to score fourteen markers in three minutes.

#### Quakers Wallop Dennison 42-17 for Eighth Straight Victory

Red and Black quintet notch sixteenth victory in final game, with unimpressive win over Railroaders. Local zone limits opposition to six action buckets.

### THE TOURNAMENT

#### Quakers Edge Cambridge 48-46 in Thrilling Battle

Locals reach semi-finals by edging tough Cambridge Brownies. Quakers stave off desperate enemy rally in final two periods.

#### Locals Top Uhrichsville Tigers 43-36 in Semi-finals

Quakers again snare early lead and fight off opponents' last period rally. Red and Black still badly off form.

#### Coshocton Indians Scalp Quakers 62-55

Fast-breaking Indians snap Quakers' ten game winning streak in District finals. Fast, exciting contest featured by sensational marksmanship of both teams. Quakers end highly successful season with eighteen victories and only five setbacks.

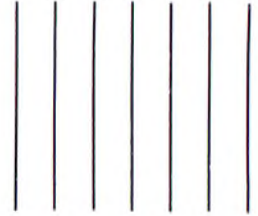
# BASKETBALL



1944



1944



NEAL BURKE

Center

"Stretch," our 6' 6" center, was our leading scorer this year, and his altitude advantage over opponents accounted for many extra goals. He was named on the International News Service All-Ohio team.

TOM ORR

Guard

Tom was captain of the team this year and well deserved this position. He was a constant and reliable player on the quintet, and his average of eleven points per game is ample proof of his offensive ability. He was chosen on the first team All-Tournament squad.

RICHARD GEIB

Forward

"Rich," another junior, did an excellent job at his forward position. His fiery temper was responsible for his excellent rebound work. We expect to hear a lot about Rich next year.

JACK STONEMAN

Forward

Jack, a junior, showed marked improvement over his last year's play. He was a dead shot from the center, and his left handed lay-ins were hard to stop.

ROBERT HARRIS

Guard

"Bob," a junior this year, showed plenty of class in his defensive playing. He was responsible for many Phila tallies; and when the going was tough, he could be relied upon. We shall see more of "Bob's" abilities next year.

---

MARVIN BEANS - - - - - *Guard*

Beans was one of the most aggressive boys on the squad. He was a reliable "sub" when the going got tough and was especially adept at stealing the ball from opponents.

CLARENCE HANNA - - - - - *Forward*

Hanna specialized in one-handed pivot shots, and frequently came through for baskets in critical moments. His gridiron experience came in handy in recovering rebounds. He is a junior who has another year of varsity play ahead of him.

EDWARD WARMACK - - - - - *Guard*

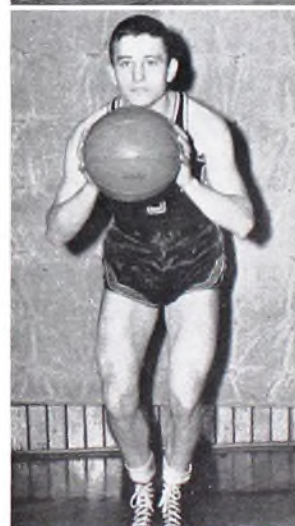
"Eddie" was the fastest boy on the squad. He constantly intercepted enemy passes and turned them into easy baskets. His defensive work in the Canton Timken game is worthy of special mention.

STANLEY FISHER - - - - - *Center*

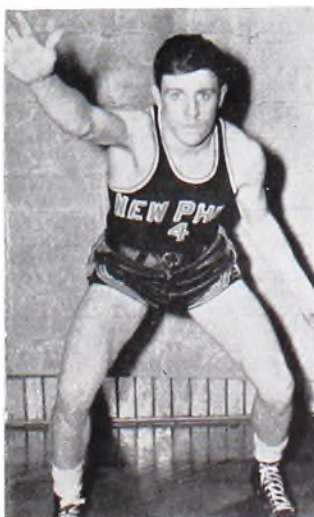
"Stan" was Burke's understudy and as a result, didn't see much action this year. But when he was in there, he showed great promise for the future.

WILLIAM VALENTINE - - - - - *Forward*

"Bill" was one of our most consistent scorers. His steady improvement gained him a starting position towards the end of the season, and his playing in the District Tournament was especially commendable.



1944



# Reserve Basketball Squad



Row 1—Bill Yaggi, Jack Singerman, Roland Platz, Bob Woods.

Row 2—William Kniesner, Leon Yarnell, Bob Harris, Howard Schneider, Raymond Strickmaker, Jack Mason.

## Season Record

NPHS	OPPONENTS
33	Bolivar 26
22	Dennison 23
42	Newcomerstown 13
29	St. Joseph 19
16	Midvale 23
28	Dover 21
41	Massillon 42
17	Uhrichsville 20
24	Dover 18
22	Midvale 32
17	Newcomerstown 24
20	Canton Timken 32
32	Uhrichsville 18
26	Dennison 27

## *Cheerleaders*



Pauline Tolotti, Mary Dessecker, Kathryn Marsh, and Ann Kirk.



Let's give a big cheer for our cheerleaders. They were on the job at all of the games, and added pep and color to the events. The snappy four have led us for three years. As they are all seniors, we shall certainly miss them next year.



## SPORT SCOPE



1—Weary spectators . . . 2—Who's got the ball? . . . 3—Having a victory feast . . . 4—Whatta defense! . . . 5—Jump ball . . . 6—Ready for action . . . 7—Expecting something . . . 8—Rear view! . . . 9—Warming up . . . 10—Where's the ball? . . . 11—Tooters and strutters . . . 12—Interesting bunch? . . . 13—Just before the battle . . . 14—Tense second . . . 15—The afternoon begins . . . 16—Get it, Phila . . . 17—Step it up, kids . . . 18—Boring, isn't it?







