

DELPHIAN

19

63

Look to
the



FUTURE





The Delphian 1963

FOREWORD



This year the Delphian Staff has looked to the future for their ideas for this year's Annual.

We sincerely hope you will enjoy this new experience in yearbook journalism as much as we of the staff have enjoyed doing it.

JOHN A. MORRIS

Editor-in-Chief

DEDICATION

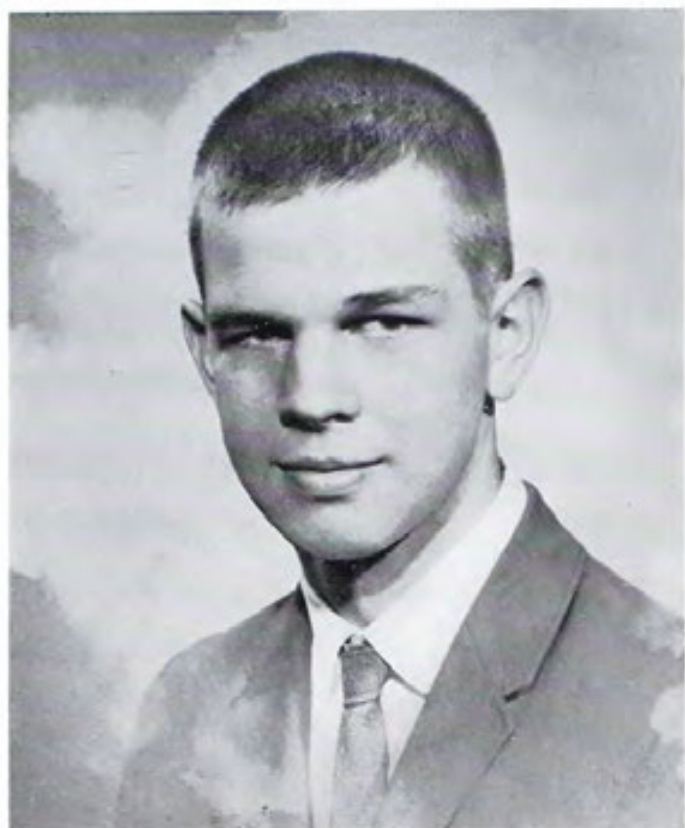


The 1963 Delphian is dedicated to

MR. J. FOREST TUCKER

in appreciation of his devotion to his profession and his assistance with the publication of the Delphian from 1913 until his retirement in 1961. Even though Mr. Tucker has retired, the Delphian is still printed by the Tucker Printing Company, now operated by his two sons.

In this way, we recognize him for his contribution to the school, the community and the public.



In Memoriam

FORREST GANO

1945 — 1963

Death be not proud, though some have called thee
Mighty and dreadful, for thou art not so;
For those whom thou think'st thou dost overthrow
Die not, poor Death; nor yet canst thou kill me.
From Rest and Sleep, which but thy picture be,
Much pleasure; then from thee much more must flow;
And soonest our best men with thee do go - -
Rest of their bones and souls' delivered!
Thou'rt slave to Fate, chance, kings, and desperate men,
And dost with poison, war, and sickness dwell;
And poppy or charms can make sleep as well
And better than thy stroke. Why swell'st thou then?
One short sleep past, we wake eternally,
And Death shall be no more; Death, thou shalt die!
- - John Donne - -

MR. ELMER PFISTER

1903 — 1963

Thou know'st 'tis common; all that live must die,
Passing through nature to eternity.
- - William Shakespeare - -

CONTENTS



Title Page	1 — 3
Forward	4
Dedication	5
Memoriam	6
Table of Contents	7
Faculty	8
Classes	16
Activities	50
Athletics	92
Quaker Corners	114
Advertising	122

FACULTY





BOARD OF EDUCATION AND ADMINISTRATION



STANDING—John R. LaFontaine Jr., James Pritz, Earl P. Olmstead.

SEATED—Donald R. Wagner, clerk-treasurer; Joseph Richards, President; William H. Gowan, Vice-President.



Mrs. Thelma Busby



Mrs. Ruth Peoples



Mrs. Evelyn Smith



Mr. Force
Superintendent of schools

Mr. Steffen
Asst. Superintendent



Frank B.
Fuerst
Superinten-
dent of
buildings and
grounds



Harold
Bartholow
Attendance
officer



Kenneth Shear, Ronald Bevan, Daniel Casebeer, Harry Nusbaaur

FACULTY



Wanda Acheson
Paul Bliss
Susan Dummermuth

Frank Bartholow
Albert Christopher
Albert Dunn

Leo Benjamin
Jeannette Dawes
Theodore Fait

FACULTY



Robert Funk
Syl Harmon
William Kidd

Ralph Gartrell
Mary Jane Hodder
Mary Jane Korn

Jane Gibbs
Ross Hoy
John LaFontaine

FACULTY



John Light
Sherril Peters
George Polce

Barbara Makee
Kelbert Phillips
Rodman Ralston

Mary Moffitt
Alfred Pocock
Jane Reiser

FACULTY



Fred Russell
Leola Williams

Frances Taylor
Murial Zimmerman

Carl Williams
John Zion

not pictured

Ingraham Smith
Ronald Meese
Helen Wilson



Mr. Howey
Principal



Sue Keener
Secretary

CLAS



55





Michael Adams
Nancy Angel
Sherryl Barnes

Jamae Amick
Ester Arter
Joanne Beaber

Barry Anderson
Sandra Bair
Edward Bean

Connie Anderson
Carol Ball
Vondalene Bear

CLASS





Kathryn Bober
William Byers
Jean Ann Clendenin

Richard Bradley
Dan Caldwell
Nancy Clum

Muriel Burch
Donald Calhoun
Alice Cochran

John Burtcher
Jack Cargnel
Carol Conconi

OF 1963





Joanne Creager



Jerry Dehl



Dale Denham

LeRoy Cope
Michael Davis
Judith DeMattio

Steven Coutts
Lois Dawson
Patricia DeMichael

CLASS



Daniel DeVecka



Jill Duve



John Eichel



Robert Dummermuth
Karen Dyer
Sharon Eklund

Gloria Duper
James Edie
Juanita Elliott

DF 1963





Elizabeth Ellwood
Shirley Fish
Forrest Gano

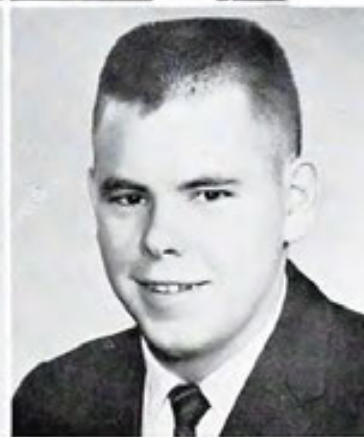
John Evans
Charles Fisher
Melinda Gibbs

Thomas Farbizo
David Fockler
Carole Graham

Dale Fincher
Jane Fontana
Joseph Grasselli

CLASS





William Graves
Beverly Haver
Jerry Horn

Patricia Haakinson
Tom Heidenreich
Helen Huff

Lynda Halter
Kenneth Hill
John Hurst

Mary Harding
Robert Hixson
Darla Johnson

OF 1963





Carol Kinsey



Sharon Landes



Diana Lawrence

Elaine Kaserman
Gloria Kinsey
Norman Lanzer

Lars King
Sandra Knapp
Ben Lawrence

CLASS



Betty Libertore



Bonita Maple



Charlene Martin



Jacqueline Lorenz
Louis Marinelli
Judith Massarelli

James Mangon
Lynn Marsh
Fredrick Maurer

DF 1963





Thomas May
Jerry Mercer
Alice Mitchel

Richard McConnell
Carol Miller
John Morris

Susan McMasters
Charles Mills
Richard Murphy

Richard Meek
Marold Mills
William Murphy

CLASS





Carol Mutti
JoAnn Rausch
William Ricker

Rebecca Numan
Steve Reese
Andrea Rummell

Terry Pennington
Chris Rice
John Russell

Shirley Pishner
Ellen Rich
Karen Sanders

OF 1963





Linda Shaffer



Diana Sloe



Robert Smith

George Schwartz

Garry Shores

John Smith

Dave Shaffer

Sandra Sims

Rebecca Smith

CLASS



Robert Stein



Rebecca Stocksdaile



Sharon Taylor



Mary Stempfly
Darrell Stokey
Susan Taylor

Steve Stephan
Jane Sullivan
James Tilkey

OF 1963





Marjorie Tolbert
Merrie VanSickle
Eric Waltz

William Tufford
Joe Vaughn
Steve White

Rosemary Turrin
Shirley Walker
Barbara Williams

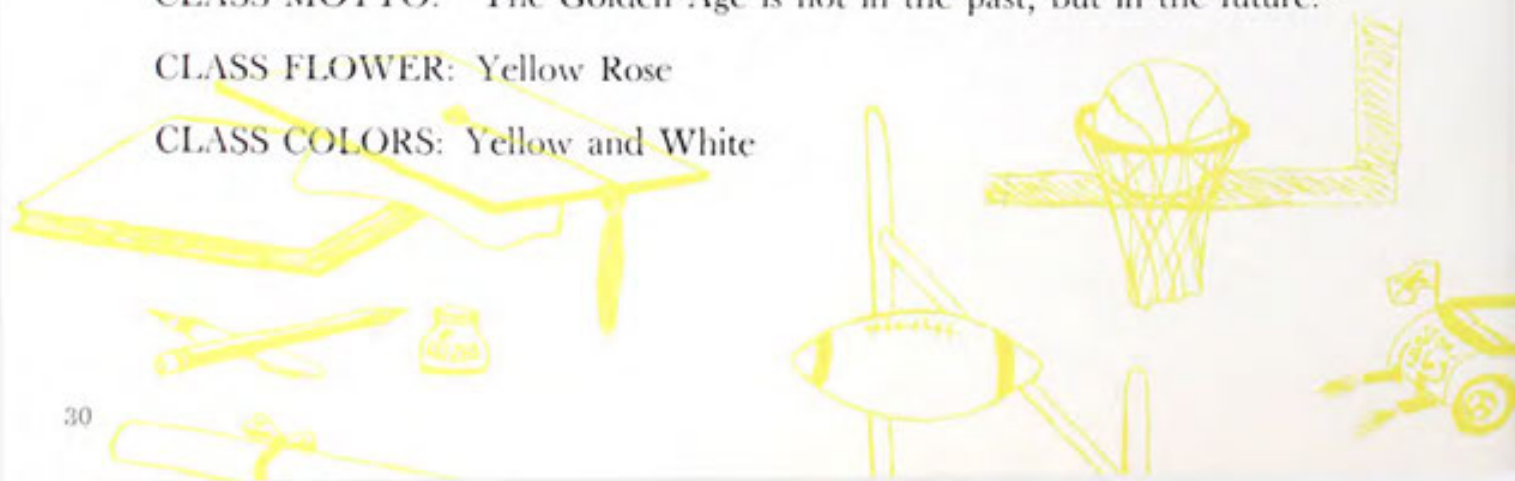
William Uptegraph
Terry Walton

1963 CLASS

CLASS MOTTO: "The Golden Age is not in the past, but in the future."

CLASS FLOWER: Yellow Rose

CLASS COLORS: Yellow and White



SENIOR DIRECTORY

Adams, Michael L. — Spanish Club 10; Acappella Choir 10, 11; Philadelphians 11; Football 10; Boys Ensemble 10.

Amick, James E. — Track 10; Football 10; V.I.C. 11, 12.

Anderson, Barry A.

Anderson, Connie L. — Spanish Club 11, 12.

Angel, Nancy J. — Senior Scholarship Team 10; Office Personnel 10; Central News Typist 12; Future Teachers 11, 12; Acappella Choir 10, 11, 12; Philadelphians 11; Junior Jamboree 11; Young Business Leaders 12; Pep Club 12; Scholarship Tests 11.

Arter, Ester F. — Senior National Honor Society 10.

Bair, Sandra K. — Senior Student Council 10, 11; Senior Scholarship Team 11; Y-Teens 10, 11, 12; Future Teachers 11, 12; Future Nurses 12; French Club 10; Acappella Choir 10, 11, 12; Philadelphians 11; Senior Orchestra 10, 11; Junior Jamboree 11; Pep Club 12.

Ball, Carol A. — Senior National Honor Society 10; Senior Scholarship Team 10; Y-Teens 10, 11; Office Personnel 12; Central News Typist 12; Future Teachers 11, 12; Future Nurses 11, 12; Acappella Choir 10; Junior Jamboree 11; Young Business Leaders 11; Pep Club 12; Scholarship Tests 10, 12.

Barnes, Sherryl L. — Y-Teens 10, 12; Spanish Club 10, 11; Future Nurses 11, 12; Future Teachers 11, 12; Pep Club 12; Young Business Leaders 12.

Beaber, Joanne — Spanish Club 11, 12.

Bean, Edward E. — Future Teachers 12; Spanish Club 10; Dance Band 10; Senior Orchestra 10; Football 11; Basketball 10, 11; Track 10.

Bear, Vondalene R. — Senior Scholarship Team 10, 11; Library Staff 11; Future Teachers 11; Spanish Club 11, 12; Scholarship Tests 11.

Bober, Katherine M. — Y-Teens 10, 11; Future Nurses 11, 12; Junior Jamboree 11; Pep Club 12.

Bradley, Richard R. — Hi-Y 12; Acappella Choir 10, 11, 12; Philadelphians 11; Track 10, 11, 12.

Burch, Muriel J. — Pep Club 12.

Burtscher, John E. — Senior Student Council 10; Future Teachers 11, 12; Spanish Club 12; Dramatic Club 11; Audio Visual 10, 11, 12; Hi-Y 12; Acappella Choir 10, 11, 12; Forestry Club 12; Junior Jamboree 11; Scholarship Tests 11, 12; Boys State Representative 11; Track Manager 10.

Byers, William R. — V.I.C. 11, 12; Junior Jamboree 11.

Caldwell, Dan G. — V.I.C. 11, 12.

Catheun, Donald K. — Spanish Club 11, 12; Junior Jamboree 11; Senior Student Council.

Cargnel, Jack L. — Delphian Staff 10, 11, 12; Future Teachers 12; Spanish Club 10; Hi-Y 12; Class Officer 10; Football 10, 11, 12; Baseball 10; Basketball 10, 11, 12.

Cendenin, Jean A. — Senior Student Council 12; Senior National Honor Society 11, 12; Senior Scholarship Team 10, 11; Central News 10, 11, 12; Future Nurses 11; French Club 12; Senior Orchestra 10; Junior Jamboree 11; Scholarship Tests 10, 11.

Cum, Nancy A. — Y-Teens 10; Future Teachers 10.

Cochran, Alice R. — Pep Club 12.

Conconi, Carol A. — Senior National Honor Society 11, 12; Senior Scholarship Team 10, 11; Future Teachers 11, 12; French Club 11; Acappella Choir 12; Senior Orchestra 10, 11; Junior Jamboree 11; Scholarship Tests 10, 11.

Cope, LeRoy D. — V.I.C. 11, 12; Hi-Y 11, 12.

Coutts, Steven D. — Acappella Choir 10, 11.

Creager, Joanne E. — Senior Scholarship Team 10, 11; Y-Teens 10, 11; Future Nurses 11, 12; French Club 11; Junior Jamboree 11; Pep Club 12; Scholarship Tests 11.

Davis, Micheal J. — Future Teachers 11, 12; Hi-Y 11, 12; Senior Band 10, 11, 12; Drum Major 10, 11, 12; Dance Band 10, 11, 12; Senior Orchestra 10, 11, 12; Junior Jamboree Director 11.

Dawson, Lois J.

Dehl, Jerry A. — Spanish Club 10; Football 10; Junior Jamboree 11; Future Teachers 12; Track 10, 11, 12.

DeMattio, Judith A. — Future Nurses 12.

DeMichael, Patricia A. — Y-Teens 12; Future Teachers 12; Young Business Leaders 12.

Denham, Dale F. — Future Teachers 11, 12; Audio-Visual 10, 11, 12; Boys State Representative 11.

DeVecka, Daniel — Track Manager 11.

Dummermuth, Robert — Acappella Choir 10, 11, 12.

Duper, Gloria G. — Library Staff 12; Senior Band 12; Young Business Leaders 12.

Duve, Jill L. — Y-Teens 10; Acappella Choir 11.

Dyer, Karen J. — Junior Jamboree 11.

Edie, James R. — Future Teachers 12; Audio-Visual 12; Acappella Choir 11; Scholarship Tests 11; Chess Club 10.

Eichel, John E. — Junior Jamboree 11; Baseball 10, 11, 12; Basketball 10, 11, 12.

Eklund, Sraron A. — Y-Teens 12; Senior Band 10, 11, 12.

Elliott, Juanita M. — Y-Teens 10; Library Staff 11.

Ellwood, Elizabeth A. — Y-Teens 10; Central News 12; Young Business Leaders 12.

Evans, John L. — Future Teachers 11; Audio-Visual 10, 11, 12; Hi-Y 10, 11, 12; Senior Band 10, 11, 12; Dance Band 10, 11, 12; Senior Orchestra 10, 11, 12; Junior Jamboree 11; Scholarship Tests 10, 11, 12; Chess Club 10; Pep Band 10, 11, 12.

Farbizo, Thomas M. — Future Teachers 12; Hi-Y 12; Class Officer 11; Acappella Choir 10; Junior Jamboree 11; Scholarship Tests 10; Football 10, 11, 12; Baseball 10; Basketball 10; Track 10, 11, 12.

Finicher, Dale D. — V.I.C. 11, 12.

Fish, Shirley — Y-Teens 10, 11; Junior Jamboree 11; Pep Club.

Fisher, Charles T. — Acappella Choir 10, 11; Junior Jamboree 11; Young Business Leaders 12; Football Manager 10, 11; Track Manager 10, 11.

Fockler, David J. — Acappella Choir 11; Junior Jamboree 11; Track 11, 12; Stadium Usher 11.

Fontana, Jane A. — Y-Teens 10, 11; French Club 11, 12; Acappella Choir 10, 11, 12; Junior Jamboree 11; Scholarship Tests 11.

Gano, Forrest R.

Gibbs, Melinda — Y-Teens 11, 12; Future Teachers 11, 12; Future Nurses 11, 12; French Club 10; Auditorium Usher 10, 11, 12; Junior Jamboree 11; Pep Club 12.

Graham, Carole A. — Future Teachers 12; Young Business Leaders 12; Pep Club 12.

Grasselli, Joseph B.

Graves, William

Haakinson, Patricia A. — Senior Scholarship Team 10, 11, 12; Y-Teens 10, 11, 12; Future Teachers 11, 12; Future Nurses 11, 12; Acappella Choir 10, 11, 12; Philadelphians 11; Junior Jamboree 11; Pep Club 12; Scholarship Tests 10, 11.

Halter, Lynda S. — Y-Teens 11, 12; Future Teachers 11, 12; French Club 10; Dramatic Club 11, 12; Senior Orchestra 10, 11; Junior Jamboree 11; Pep Club 12.

SENIOR DIRECTORY

Harding, Mary J. — Senior Scholarship Team 10; Y-Teens 11; Office Personnel 10; Central News 10, 11, 12; Future Teachers 11, 12; French Club 10; Class Officer 10; Auditorium Usher 10, 11, 12; Acappella Choir 10, 11, 12; Philadelphians 11; Junior Jamboree 11; Young Business Leaders 12; Pep Club 12.

Haver, Beverly A. — Senior Scholarship Team 10, 11; Y-Teens 11; Future Teachers 11, 12; Spanish Club 10, 11; Junior Jamboree 11; Pep Club 12; Scholarship Tests 10, 11.

Heidenreich, Tom A. — Senior Student Council 10, 11; Spanish Club 10; Track 10, 11, 12.

Hill, Kenneth F. — French Club 10; Debate Team 12; Junior Jamboree 11; Boys State Representative 11; Track 10, 11, 12.

Hixon, Robert F. — Senior Scholarship Team 10; Audio-Visual 10, 11, 12; Dance Band 10, 11, 12; Acappella Choir 10, 11, 12; Philadelphians 11; Senior Orchestra 10, 11; Junior Jamboree 11; Scholarship Tests 10; Boys State Representative 11; Football 10, 11, 12; Track 10, 11, 12; Wrestling 11, 12; Boys Ensemble 11.

Horn, Jerry L. — Senior Scholarship Team 10; Senior National Honor Society 10; Audio-Visual 11; Forestry Club 11; Scholarship Tests 11.

Huff, Helen J. — French Club 10; Acappella Choir 10, 11, 12; Young Business Leaders 11.

Hurst, John W. — Senior Student Council 10; Future Teachers 11, 12; French Club 10; Acappella Choir 10, 11, 12; Junior Jamboree 11; Track 10.

Johnson, Darla A. — Y-Teens 11, 12; Future Teachers 11, 12; Acappella Choir 10; Junior Jamboree 11; Young Business Leaders 11, 12; Pep Club; Scholarship Tests 10, 11.

Kaserman, Elaine L. — Senior National Honor Society 10, 11, 12; Senior Scholarship Team 10, 11; Homecoming Court 12; Senior Band 10, 11; Acappella Choir 10, 11; Senior Orchestra 10; Junior Jamboree 11; Young Business Leaders 11, 12; Pep Club 12; Scholarship Tests 10, 11.

King, Lars E. — Debate Team 12; Junior Jamboree 11; Football Manager 11, 12.

Kinsey, Carol L. — Senior Scholarship Team 10, 11; Y-Teens 10, 11, 12; Del-

phian Staff 10, 11, 12; Future Teachers 11, 12; French Club 10; Dramatic Club 11; Junior Jamboree 11; Scholarship Tests 10, 11.

Kinsey, Gloria J. — French Club 10; Dramatic Club 12; Senior Band 10, 11, 12; Majorette 10, 11, 12; Acappella Choir 10, 11, 12; Junior Jamboree 11; Young Business Leaders 11.

Knapp, Sandra L. — Y-Teens 11; Future Nurses 11, 12; French Club 11, 12; Senior Band 10, 11, 12; Acappella Choir 10, 11, 12; Pep Club 12; Scholarship Tests 11.

Landes, Sharon J. — Senior Student Council 10, 11, 12; Y-Teens 11, 12; Future Teachers 11, 12; French Club 10; Dramatic Club 11, 12; Junior Jamboree 11; Pep Club 12; Scholarship Tests 10, 11.

Lanzer, Noran R. — Scholarship Tests 10, 11; Wrestling 11, 12.

Lawrence, Ben L. — V.I.C. 12; Football 11.

Lawrence, Diana L. — Y-Teens 11, 12; Future Nurses 12; Young Business Leaders 12.

Libertore, Betty J. — Senior Scholarship Team 10, 11; Y-Teens 10, 11; Central News Typist 12; Future Teachers 10, 11, 12; Dramatic Club 11; Varsity Cheerleader 10, 11, 12; Acappella Choir 10, 11, 12; Philadelphians 11; Junior Jamboree 11; Pep Club 12; Scholarship Tests 10, 11.

Lorenz, Jacqueline Jo — Senior Scholarship Team 10, 11; Y-Teens 11, 12; Future Teachers 11, 12; French Club 10; Dramatic Club 11, 12; Senior Band 10, 11, 12; Senior Orchestra 10, 11, 12; Junior Jamboree 11; Scholarship Tests 10, 11; Girls State Representative 11; Pep Band 10.

Mangon, James R. — V.I.C. 11, 12.

Maple, Bonita — Senior Student Council 10; Homecoming Court 11; Y-Teens 10; Future Teachers 12; Future Nurses 11, 12; Senior Band 10; Acappella Choir 11; Junior Jamboree 11; Pep Club.

Marinelli, Louis J. — Senior Student Council 12; V.I.C. 11, 12; Acappella Choir 10; Junior Jamboree 11; Basketball 10.

Marsh, Rae C. — Senior Student Council 10; Y-Teens 10, 11, 12; Future Teachers 11, 12; Future Nurses 11, 12; French Club 11; Senior Band 10; Ac-

appella Choir 10, 11; Junior Jamboree 11; Pep Club 12.

Martin, Charlene B. — Senior Orchestra 10.

Massarelli, Judith A. — Y-Teens 10, 11; Office Personnel 10; Future Teachers 11, 12; Future Nurses 11; Acappella Choir 10, 11, 12; Junior Jamboree 11; Pep Club 12.

Maurer, Fredrick R. — Delphian Staff 10, 11, 12; Future Teachers 12; French Club 10, 12; Audio-Visual 11; Hi-Y 10, 11, 12; Senior Band 10, 11, 12; Dance Band 10, 11, 12; World Affairs Institute Representative 11; Senior Orchestra 10, 11, 12; Junior Jamboree 11; Chess Club 10; Pep Band 10, 11, 12.

May, Thomas J. — Senior Scholarship Team 11; Spanish Club 10, 11, 12; Hi-Y 12; Junior Jamboree 11; Football 11, 12; Baseball 10, 11, 12; Wrestling 11.

McConnell, Richard A. — V.I.C. 11, 12.

McMasters, Susan K. — Senior National Honor Society 10, 11, 12; Senior Scholarship Team 10, 11; Y-Teens 10, 11, 12; Delphian Staff 10, 11, 12; Future Teachers 11, 12; French Club 11, 12; Spanish Club 10; Pep Club 12; Scholarship Tests 10, 11.

Meek, Richard — V.I.C. 11, 12; Track 11.

Mercer, Jerry — Spanish Club 10; Audio-Visual 10, 11, 12.

Müller, Carol J. — Y-Teens 10, 11, 12; Office Personnel 10; Library Staff 11, 12; Future Teachers 11, 12; Future Nurses 11, 12; Young Business Leaders 12; Junior Jamboree 11; Pep Club 12.

Mills, Charles E.

Mills, Harold D.

Mitchell, Alice E.

Morris, John A. — Delphian Staff 10, 11, 12; Audio-Visual 11, 12; Senior Band 10; Dance Band 10, 11; Senior Orchestra 10; Boys State Representative 11; Chess Club 10.

Murphy, Richard F. — Spanish Club 11; Hi-Y 12; Junior Jamboree 11; Track 10, 11, 12.

Murphy, William M. — V.I.C. 11, 12; Junior Jamboree 11; Track 10, 11.

Mutti, Carol E. — Senior Scholarship Team 11; Y-Teens 12; Delphian Staff 10, 11, 12; Future Teachers 11, 12; Dramatic Club 12; Class Officer 11; Senior Band 10; Acappella Choir 10, 11; Junior Jamboree 11; Scholarship Tests 10, 11.

SENIOR DIRECTORY

Nieman, Rebecca B. — Senior National Honor Society 11; Senior Scholarship Team 10, 11, 12; Homecoming Court 11; Y-Teens 10; Central News 10, 11, 12; Future Teachers 11, 12; French Club 11, 12; Class Officer 10, 11; Reserve Cheerleader 11; Varsity Cheerleader 12; Acappella Choir 11; Junior Jamboree 11; Pep Club 12; Scholarship Tests 10, 11.

Pennington, Terry A. — Hi-Y 12; Junior Jamboree 11; Basketball 10, 11; Track 10.

Pishner, Shirley A.

Rausch, JoAnn — Senior Student Council 11, 12; Y-Teens 11, 12; Central News Typist 12; Future Teachers 12; Future Nurses 12; Junior Jamboree 11; Pep Club 12; Scholarship Tests 11.

Reese, Steve — Spanish Club 11, 12; Class Officer 10; Football 10, 11, 12; Baseball 10, 11, 12; Wrestling 11.

Rice, Chris — Senior Student Council 10, 11; Senior Scholarship Team 10, 11; Central News 10, 11, 12; Audio-Visual 12; Hi-Y 10, 11, 12; Class Officer 11, 12; Senior Band 10, 11, 12; Dance Band 10, 11; Senior Orchestra 10; Junior Jamboree 11; Scholarship Tests 10, 11; Boys State Representative 11; Pep Band 10, 11, 12; Golf 10.

Rich, Ellen B. — Senior National Honor Society 11; Senior Scholarship Team 10, 11; Homecoming Court 10; Homecoming Queen 12; Central News 10, 11, 12; Future Teachers 11, 12; Dramatic Club 11, 12; Class Officer 10; Reserve Cheerleader 11; Acappella Choir 10, 11, 12; Junior Jamboree 11; Pep Club 12; Scholarship Tests 10, 11.

Ricker, William — V.I.C. 11, 11; Senior Band 10; Junior Jamboree 11; Pep Band 10.

Rummell, Andrea K. — Senior National Honor Society 11; Senior Scholarship Team 10, 11; Future Teachers 11, 12; Spanish Club 11; Junior Jamboree 11; Pep Club 12; Scholarship Tests 10, 11, 12.

Russell, John C. — Future Teachers 11, 12; Spanish Club 10; Audio-Visual 12; Forestry Club 11, 12; Scholarship Tests 11.

Sanders, Karen L. — Y-Teens 11; Future Teachers 12; French Club 10; Auditorium Usher 10, 11, 12; Senior Band 10, 11, 12; Acappella Choir 10, 11, 12; Junior Jamboree 11; Young Business Leaders 11.

Schwartz, George W. — Acappella Choir 10, 11; Football 10, 11, 12; Baseball 10, 11, 12; Basketball 10, 11, 12; Track 10, 11, 12.

Shaffer, Dave A. — V.I.C. 11, 12.

Shaffer, Linda K. — Y-Teens 11, 12; Future Nurses 11, 12; Spanish Club 10; Junior Jamboree 11; Pep Club 12.

Shores, Gary L. — Senior Student Council 12; Senior Scholarship Team 10; Delphian Staff 10, 11, 12; Future Teachers 12; Hi-Y 12; Class Officer 10; Scholarship Tests 10, 11; Football 10, 11; Track 10, 11, 12; Wrestling 11, 12; Chess Club 10.

Sims, Sandra A. — Y-Teens 11; Junior Jamboree 11; Young Business Leaders 11; Pep Club 12.

Sloe, Diana K. — Y-Teens 10, 11, 12; Future Nurses 10, 11; Spanish Club 10; Senior Band 10, 11, 12; Junior Jamboree 11; Young Business Leaders 12.

Smith, John — V.I.C. 11, 12; Acappella Choir 10.

Smith, Rebecca J. — Senior National Honor Society 10, 11, 12; Senior Scholarship Team 10, 11; Central News 10, 11, 12; Future Teachers 11, 12; Spanish Club 10; Pep Club 12; Scholarship Tests 10, 11, 12.

Smith, Robert H. — Football 10, 11, 12; Track 10, 11, 12.

Stein, Robert L. — Senior Student Council 10, 11, 12; Senior Scholarship Team 11; Future Teachers 11, 12; Hi-Y 12; Class Officer 12; Junior Jamboree 11; Scholarship Tests 10, 11; Boys State Representative 11; Basketball 10; Track 10, 12.

Stempfly, Mary A. — Y-Teens 10, 11, 12; Office Personnel 10; Future Teachers 11, 12; Future Nurses 11, 12; French Club 10; Dramatic Club 11, 12; Debate Team 12; Varsity Cheerleader 10, 11, 12; Acappella Choir 11; Junior Jamboree 11; Pep Club 12.

Stephan, Steve D. — V.I.C. 11, 12.

Stocksdale, Rebecca J. — Senior Scholarship Team 10, 11; Homecoming Court 12; Y-Teens 10, 11, 12; Future Teachers 11, 12; Future Nurses 11, 12; French Club 10, 11; Dramatic Club 12; Reserve Cheerleader 11; World Affairs Institute Representative 11; Junior Jamboree 11; Pep Club 12.

Stokey, Darrell L. — Junior Jamboree 11.

Sullivan, Jane E. — Future Teachers 12.

Taylor, Sharon K. — Senior Student Council 10, 11; Senior Scholarship Team 10, 11; Y-Teens 11; Future Teachers 11, 12; Dramatic Club 11, 12; Class Officer 12; Auditorium Usher 10, 11, 12; Junior Jamboree 11; Pep Club 12; Scholarship Tests 10; Girls State Representative 11.

Taylor, Susan — Senior Student Council 11, 12; Y-Teens 11, 12; Future Teachers 11, 12; Future Nurses 11, 12; Spanish Club 10, 11; Auditorium Usher 10, 11, 12; Junior Jamboree 11; Pep Club 12.

Tilkey, James M. — V.I.C. 12.

Tolbert, Marjorie A. — Y-Teens 10, 11, 12; Future Teachers 11, 12; Future Nurses 11, 12; Spanish Club 10; Senior Orchestra 10, 11, 12; Junior Jamboree 11; Pep Club 12.

Tufford, William R. — Senior Student Council 10; Senior Scholarship Team 10, 11; Central News 10, 11, 12; Future Teachers 12; Hi-Y 11, 12; Junior Jamboree 11; Scholarship Tests 10, 11; Track 11, 12.

Turpin, Rosemary — Y-Teens 11; Office Personnel 12; Future Teachers 11, 12; Future Nurses 11, 12; Junior Jamboree 11; Pep Club 12; Scholarship Tests 10, 11.

Uptegraph, William G. — Junior Jamboree 11; Basketball 10; Track 10, 11, 12.

VanSickle, Merrie E. — Senior Student Council 10, 11; Y-Teens 10, 11, 12; Office Personnel 12; Future Teachers 12; Future Nurses 12; Junior Jamboree 11; Pep Club 12; Scholarship Tests 11, 12.

Vaughn Joe T. — Junior Jamboree 11; Football 11, 12; Track 10, 11, 12; Wrestling 11, 12.

Walker, Shirley J. — Senior National Honor Society 11, 12; Senior Scholarship team 10, 11; Future Teachers 12; French Club 10; Dramatic Club 12; Senior Band 10, 11, 12; Majorette 10, 11, 12; Acappella Choir 11, 12; Junior Jamboree 11; Scholarship Tests 10, 11.

Walton, Terry A.

Waltz, Eric P. — V.I.C. 11, 12.

White, Steve W. — V.I.C. 11, 12; Football 11; Baseball 12.

Williams, Barbara E. — Future Teachers 12.

CLASS OF 1964



JUNIOR CLASS OFFICERS

Treasurer: Jeanne Ballantine, Vice President: Pete Alpeter, Mrs. Sherril Peters, Advisor, Mr. Ross Hoy, Advisor, Secretary: Linda Doidge, President: Joe Moesta.

Marcia Ricker, Jim Mason, Larry Krauss, Rick Frantz, Cherryl Atkinson.



Standing: Becky Mercer, Deanna Belden, Ellen Seabrook, Dave Dessecker.

Seated: Jim Russel, Paul Sheperd.



Standing: Carol Bigler, Christine Schwark, Jane Hidey.

Seated: Peggy Scott, Phil Cole, John Glazer, Barbara Foutz

Standing: Cyler Trachsel, Charles Shambarger, Jim Kimmel.

Seated: Marcia Painter, Judy Miller.



Jim Swisher, Marthasue Kidd, Shirley Burns,
Brenda Smallwood, Doris Welfley, Carol
Hensley, Carolyn Sickles.



Dick McDade, Gerald
Spring, Milton Wheeler,
Mary Ann Haney, Barbara
Walker, Jim Sweasy.



Joe Maesta, Allen Crane, Tom Corwin, Jean
Ann Gartrell, Bobbie Burns.



Virginia Clymans, Tim Sch-
losser, Arther Siber II, Dave
Walton, Bob Mizer.



Leland Echleberry, Davetta Rap-
port, Bill Mizer, Gloria Cookson,
Rick Moffitt, Jackie Krockner.



Bob Eckert, Rick Fox, Judi Bah-
r, Marilyn Breehl, Lael Nuss-
baum, Connie Dye, George Mar-
n.



Dann Johnston, Ronnie
Swinderman, Dan Mamula,
Reba Clutz, Glenn Medley.

Bob McCollough, Jean Kay Lew-
is, Bob Celce, Jeff Marshall, Kay
Felgenhauer, Tom Fragassa.





Dale "Pooch" Tate, Dorthy Herman, Stan Tate, Mary Ann Patterson, Judy Rennicker.

Carol Strimbu, Dave Kintner, John Johnson, Tom Colvin, Christine Abel.



Caroiyn Campo, Sam Dessecher, Cind Retzler, John Coldwell, Patty Maurer, Earl Menges.



Paul Knisley, Dalores Frenzel, Peggy Mackey, Becky Devore, Anne Galbraith.

Alan Shull, Lowell Burrier, Becky Young, Glenn Beaber.



Donna Tilkey, Junior May, Terry Wade, Cheryl Watson, Bonnie Page, Fred Paris.



Pam Day, Debbie Phillips, Bill Richeson, Ronnie Murphy.



Seated: Alvin Draher.
Standing: Chuck Sullivan, Charold Morris, Dianne Zingery, Priscilla Sciarrini.





Standing: Tim Llewellyn, Herbert Wilkerson,
Jim Tanner, Larry Stutz.

Kneeling: Barry Jackson, Fred Kaserman
Richard Linard.

Larry Angel, Marla Riley,
Gary Fisher, Jim Ross,
Joyce Belden.



Carolyn Rennicker, Carol
Ballard, Sharon Miller, Di-
anne Managhese, Nancy
Arter.



Max Lahmers, Larry Roth, Dale Dindo



Standing: Tom Alpeter,
Ralph Lawrence, Bill Ayers,

Seated: Susy Gardner,
Elaine Swinderman, Jeanne
Cardonni.

Standing: Dick Huff, Larry
Perkins, Mike Beitzel.

Seated: Dianna Ladrach,
Jeanne Balentine, Jill Stotts.



Barbara Eichel, Scherri Shultz, Dana
Baker, Donna Campbell, Jim Ramsey,
Karen Page, Faye Polka.





Pete Alpeter, Lynn Rutledge, Terry Keiser,
Mary Lee Warner, Eric Gribble, Pam Craw-
ley.



Standing: Jackie Taylor,
Pat Korn, Sara Bigler.
Seated: Irene Stokey.



Mike Erwin, Nick Gray, Chuck Haupt,
Jennifer Jones, John Nee, Sunday Murphy.



Colleen McMillian, Jeff Ar-
nold, Ruth Ann Fulmer,
David Fawcett, Sandy Hy-
kes.

Dwight Boor, Sue Noble,
George Santee, Sue Hoffman,
Maurine Henninger, Jim Creal.
Seated: Tom McIntosh.



Jackie Polen, Cindy Stemple, Lin-
da Urfer, Rich Walton, Jim
Niesinger.



Cheryl Swaldo, David Ladrach,
Jo Ann Debevec, Linda Meese,
Barb Schlafly, Tom Parson.

Rick Everett, Skip Erickson, John
Wheeler, Sally Hency, Linda
Doidge, Linda Duzini.





Standing: Stella Roach,
Sandy Widdows, Patty O-
linger, Steve Eckert.

Seated: Jim Penrod, Ruth
Ann Gordon.



Allen Sickafoose, Jim Wel-
ch, Sue Espenschied, Patty
Wardell, George Johnston,
Sue Bean, Edna Mutti.



CLASS OF 1965

President Gary Leatherman
Vice-President Shirley Taylor
Secretary Mary Lee Richards
Treasurer Sue Wherley
Advisors Mrs. Acheson, Mr. Kidd

ROW 1—John Thomas, Cheryl Warner, Jeanie Pompy, Judy Hinig, Dave Kutscher.

ROW 2—Bertha Westhafer, Sandra Stewart, Mollie Peach, Sherryl Tygard, Cinda Godfrey, Jane Sankey, Chan Keiser, Stan McIlvane.

ROW 3—Bob Walters, Jeff Eklund, Jill Frownfelter, Sharon Dennis, Patty Edwards, Bonnie Caldwell, Gene Amick.

ROW 4—Danny Johnson, Alvin Specht, John Wise, Chuck Newell, Kent Myers, Tom Milligan.





ROW 1—Rena Taylor, Elizabeth Snyder, Larry Lenarz, Beth Grimm, Judy Walton.
 ROW 2—JoEllen Scott, Sherly Burkhart, Linda Dummermuth, Mike Cherry, Marla Clatterbuck, Susan Gintz, Becky Korn, Dawn Hicks.
 ROW 3—Terry Cook, Terry Smith, Becky Lyons, Karen Thomas, Ivajane Englehart, Angela Fischio, Karen Bear, Dan Gopp, Dan Metzger.
 ROW 4—Francis Staley, Greg Wassem, Raymond Henderson, Robert McMillan, Mike Limbaugh, Robert Nadeau, John Kee, Steve Arnold, Steve Halchuck, Dale Waltz, Stanley Myers.



ROW 1—Laura Snyder, William Welch, Don Avon, Kenny Sablar, Paula Heaton.
 ROW 2—Dan Pompey, Rich Miller, Carla Long, Becky Englemann, Larry Fisher, Tom Raiff, Sue Swihart, Jerry Heidenreich.
 ROW 3—Dave Farrow, Susann Erwin, Karen Beltzel, Kathy Burkey, Bill Celce, Jim Glass, Louise App, Carol Bucher.
 ROW 4—Carolyn Korn, Kathy Goulder, Doug Coutts, John Strazisar, Richard Hobart, Sam Nepsa, Steve Fisher, Gary Leatherman, Jack Mathias.



ROW 1—Jim Stemple, Sharon Menapase, Patty Bevan, Debbie Kunze, John Shot.
 ROW 2—Sue Flemming, Patty Elco, Mary Angel, Jim Hartsock, Carol Burson, Jim Davis, Dalton Renner.
 ROW 3—Diane Huff, Lew Winston, Shirley Taylor, Janet Border, Cathie Ross, Dee Dee Thomas, Joette Burtcher, Diane Destefani, Eddie Russell.
 ROW 4—Mark Watson, John Miller, Dan Gibbs, Larry Bente, Tom Smith, Jody Millward, Rus Atkinson.



ROW 1—Patsy McIntosh, Phyllis Yosick, Barbara Mushrush, Sharline Edwards, Kathy Gleitsman.
 ROW 2—Chery Fahner, Cherly Burson, Ruth Ann Gintz, Linda Van Dyke, Nancy Roblin, Brenda Lynn, Becky Duve, Karen Palmer.
 ROW 3—Bob Watkins, Lynne Tschudy, Suzanne Marvin, Connie Loveday, Linda Reiser, Eileen Burke, Karen Lahmers, Bonnie Dindo, Linda Corder, Shirley Galbraith, Mary DeStephanie, Lloyd May.
 ROW 4—Dave Roll, Rick Linard, Rick Ellis, Bernard Archer, Floyd Thomas, Pat Crea-ger, George Bliss.



ROW 1—Gloria Richards, Becky Crawshaw, Jill Jackson, Barbara Metzger, Linda McKerrihan.

ROW 2—Sue Haver, Jane Shaffer, Patty Stropky, Kandy Robinson, Sandy Caswell, Dianne Shear, Lillian Everett.

ROW 3—Jane Montero, Nanry Lorenz, Judy Schlafly, Jim Harmon, Richard Wright, Joyce Fox, Sharon Perkins, Victor Walters.

ROW 4—Grace Simmers, Candy Hanni, Dan Trepin, Ted Heck, Mike Pierce, Richard Bible, Ralph Wemple, Jerry Deardorff.



ROW 1—Carol Gribble, Dave Harrison, Jack Everett, Rick Beavers, Susie Wherley, Judy Kron.

ROW 2—Linda Meek, Sandy Fenton, Peggy Rufenaucht, Steve Gibbs, Rick Kennedy, Susan Rummel, Vicki Paris, Ruth Schaar.

ROW 3—Kenny Waytts, John Burlison, Dave Borga, Ronnie Destefani, Joan Wells, Terrie Lang, Esther Riggle.

ROW 4—Maurice Boland, Terry Hewitt, Pat Ashbaugh, John Santee, Ed Evans, Jan Fait, John Senhauser.



ROW 1—Barbara Tatlick, Marian Sinkovich, Sharon Rapport, Karla Steiner, Diana Telk
 ROW 2—Libby Wilson, Mary Gano, Phyllis Peoples, Doug Russell, John Davis, Cheryl Weber, Linda Swegheimer, Gary Swaldo
 ROW 3—Kay O'Donnell, Cheryl Dean, Sandy Page, Nancy Hoffman, Chuck Briggs, Linda Kern, Sharon Palmer, Dianne Brick
 ROW 4—Louie Rybarezyk, Dave Belknap, Larry Denmon, Rick Hodder, Vearl Specht, Jim McMasters, John MacEachen, Dave Wigfield, Craig Steward



ROW 1—Carole Kies, Dianne Snyder, Jill Shawver, Nellie Morrison, Judi Gribble, Rita Edmond
 ROW 2—Susie Fawcett, Millie Benco, Gale Morgan, Pat Stropky, Linda Reiser, Chris Hauptert, Sheryl Wassen, Mary Lee Richards, Karen Sowers
 ROW 3—Bill Decker, Bill Stephon, Joyce Clymans, Stan Zimmerman, Duane Belknap, Bill Mote, Steve Morris, Bob Davidson, Don Owens
 ROW 4—Bob Mathias, Mark Francis, Bill Shook, Eileen Walters, Keith Abel, Gary Rees Frank Smith, Vic Fantin, Jeff Coleman



ACTIV



ATIES



John Morris, Editor
Mr. LaFontaine, Advisor



Gary Shores
Auditor



Rick Maurer
Business Circulation
Manager



Sue McMasters
Classes Editor



Upper right—Carol Kinsey
Senior and Faculty Editor

Left—Carol Mutti
Activities Editor

Lower right—Jac Cargnel
Athletics Editor



The 1963 Delphian

Staff steps
into the . . .



JUNIOR STAFF MEMBERS

Larry Angel

Dan Johnston

John Nee

Lael Nussbaum

Cheryl Atkinson

Jean Lewis

Doris Welfley

FUTURE

A school yearbook to adequately fulfill its purpose must do two things: It must be a report to the community on school activities and to the students it must be a comprehensive report on the many facets of school life.

The Delphian Staff of 1963 has stepped into the future to do these things. Under the supervision of Mr. LaFontaine, along with team and individual work, this book has become a reality. We have tried to correlate a modern magazine style to a modern yearbook.

SOPHOMORE APPRENTICES

Marilyn Pizzini, Richard Hobart, Terry Hewett, Gary Leatherman, Louise App, Eileen Burke.





OFFICERS

Dawn Hicks	Assistant Secreary and Treasurer
Jo Ann Rausch	Vice-President
Sue Hoffman	Secretary and Treasurer
Garry Shores	President
Mr. Williams	Advisor



Bob Steine, Susie Hoffman, and Rick Kennedy plan another project for the Council.



ROW 4—Tcm Corwin, Jim Harmon, Cheri Schultz, Jackie Taylor, Garry Shores, Louis Martinelli, John Nee, Jack Mathias, Joe Campbell, Mr. Williams

ROW 3—Susan Erwin, Sue Fleming, Sandy Page, Ivajane Englehart, Dawn Hicks, Mary Richards, Linda Corder, Pam Crawley, Shirley Taylor, John Glazer

ROW 2—Susan Hoffman, Marthasue Kidd, Doris Welfly, Susan Taylor, Jo Ann Rausch, John Davis, Sharon Landes, Faye Polka, Linda Doidge

ROW 1—Sue Gardner, Jo Ann Debevec, Rick Kennedy, Cheryl Wassem, Barbara Mushrush, Judy Hinig

Student Council links

Faculty with students

As representative of the student body, the Student Council governs the school activities. These students learn and practice the great principles of democracy.

The council, this year, conducted the annual homecoming election for the queen and her court, and took charge of her crowning during halftime at the Wellsville football game, followed by a dance in her honor in the school gym.

The magazine drive was assisted by the council for money needed in the student's activity fund. At Christmas time, a collection of canned goods was sponsored to give aid to the needy.

1962 HOMECOMING QUEEN



Miss Ellen Rich



SENIORS:

Rebecca Stocksdale

Elaine Kaserman

JUNIORS:

Doris Welfley

Mary Warner



SOPHOMORES:

Chris Haupt

Mary Richards



ROW 1—Shirley Walker, Sue McMasters, Marcia Painter, Jean Ann Clendenin, George Johnston
 ROW 2—Sue Espenschied, Virginia Clymans, Donna Campbell, Carol Conconi, Christine Schwark,
 Maurine Henninger, Nancy Angel
 ROW 3—Ellen Rich, Becky Smith, Andrea Rummell, Jackie Taylor, Anne Galbraith, Jeff Arnold,
 Charles Shambarger, Lael Nussbaum
 ROW 4—Advisors: Mr. Williams, Mrs. Dawes, Mr. Gartrell



SENIOR SCHOLARSHIP TEAM

ROW 3—Jim Mangon, Eric Waltz, Steve Stephan, Bob Hixon, Bill Tufford
 ROW 2—Jackie Lorenz, Becky Smith, Jean Clendenin, Carol Conconi, Becky Niumann, Ellen Rich,
 Andrea Rummell
 ROW 1—Karen Dyer, Nancy Angel, Elaine Kaserman, Carol Kinsey, Sue McMasters, Shirley Walker,
 Vondalene Bear

Grades lead
 the way . .



JUNIOR SCHOLARSHIP TEAM

ROW 4—Marthasue Kidd, Jean Gartrell, Carolyn Campo, Charles Shambarger, Jeff Arnold, Jackie Taylor, Ann Galbraith, Lael Nussbaum, Dave Davis
 ROW 3—Virginia Clymans, Chris Schwark, Sue Espenschied, Ellen Seabrook, Jennifer Jones, Cheri Schlutz, Cheryl Atkinson, Sue Noble, Cluad Tachsel, Debbie Phillips
 ROW 2—Patty Maurer, Jeannie Ballentine, Jo Debevec, Marcia Painter, Doris Welfley, Maureen Henninger, Pat Korn, Ethelyn Eichel
 ROW 1—Marsha Ricker, Sue Gardner, Sunday Murphy, George Johnston, Barry Jackson, Delores Frenzel, Patty Olinger, Elaine Swinderman



SOPHOMORE SCHOLARSHIP TEAM

ROW 4—Eileen Burke, John Senhauser, John Wise, Jim Harmon, Bill Shook, Eileen Walters, Karen Lahmers, Louise App, Shirley Taylor, Cinda Godfrey
 ROW 3—Mary Richards, Linda Kern, Connie Loveday, Suzanne Marvin, Jeff Eklund, Gale Morgan, Sue Fleming, Sandy Steward, Jane Schaffer, Kay O'Donnell
 ROW 2—Dianne Brick, Sue Wherley, Mary Angel, Marilyn Pizzini, Sharon Perkins, Diana Telc, Vicki Paris, Sandy Fenton, Karen Palmer
 ROW 1—Grace Simmers, Ruthann Gintz, Cheryl Dean, Cheryl Fahmer, Steve Morris, Rena Taylor, Dave Kutcher, Rita Edmon



TOP ROW —Becky Numan, Ellen Rich, Becky Smith
BOTTOM ROW —Jean Ann Clendenin, Charles Shambarger



Paul Knisely and Maurine Henninger selling "Central News."

The Central News Staff, a member of the Columbus Scholastic Press Association, is one of the busiest and hardest working organizations in our school.

The bi-weekly paper comes into being through teamwork. After the assignments are given to the staff members and returned, the articles are read and corrected. Then the typists type the articles individually so the write-ups and artists' assignments can be arranged on the correct pages.



Betty Liberatore and Elaine Kaserman mimeograph the "Central News."



ROW 3—Chris Rice, Paul Knisely, Rebecca Smith, Bob Walters, Charles Shambarger, John Senhauser

ROW 2—Maurine Henninger, Gail Morgan, Jean Ann Gartrell, Mary Harding, Becky Niuman, Ellen Rich, Mrs. Dummermuth

ROW 1—Phyllis Yosick, Susan Hoffman, Bill Tufford, Jean Ann Clendenin, George Johnson

The paper is proof read by all the members on the staff before it is sent to the typists to be mimeographed. The day before the paper is sold, the members assemble the paper and this completes another successful issue.

The News Staff's activities include a joint Christmas party and a picnic with the Delphian Staff.

TYPISTS

ROW 2—Nancy Angel, Jo Ann Rausch, Mrs. Hodder, Mary Harding, Elizabeth Ellwood
ROW 1—Elaine Kaserman, Carol Ball, Betty Libertore





SENIORS

ROW 2—Jac Cargnel, John Burtcher, Dick Bradley, Terry Pennington, Jack Evans, LeRoy Cope, Jim May

ROW 1—Bob Stein, Garry Shores, Bill Tufford, Chris Rice, Rich Murphy

The Hi-Y is affiliated with the Y.M.C.A. This year the new members were welcomed with a banquet held at Bonvechio's. Besides their regular meetings, the club held several swimming parties. At many of its meetings the Hi-Y was honored with guest ministers as speakers.

Jack Evans and Rick Maurer attended the conference of "Youth in Government Council" at Columbus. At the home basketball games the club members operated

JUNIORS

ROW 4—Mike Beltzel, Skip Erickson, Joe Campbell, John Wheeler, Eric Gribble, Mr. Funk

ROW 3—James Ramsey, Pete Alpeter, Earl Menges, Lael Nussbaum, Dan Mamula, Dave Ladrach, Tom Alpeter, Lowell Burrier, Dick Huff

ROW 2—Glen Medley, Tom Parsons, Chuck Hauptert, Butch Lawrence, Larry Krauss, Bill Mizer, Fred Kaserman

ROW 1—Jim Swisher, Tom McIntosh, Junior May, John Glazer, Dan Johnston



OFFICERS

Chris Rice	Vice-President
Pete Alpeter	Secretary-Treasurer
Jack Evans	President
Bill Mizer	Chaplain
Mr. Funk	Advisor



the concessions stand. They participated in the half-time ceremonies of the Dover-Philly football game. A fine set of religious books were bought and donated to the school library by the group. The club sponsored the annual "Roaring Twenties Ball." In honor of the seniors, a farewell banquet was given at the end of the school year.



SOPHOMORES

- ROW 4—Bob McMillan, Rick Ellis, John McCreary, Rich Hobart, Jan Falt, Gary Leatherman
- ROW 3—Jim Harmon, Maurice Boland, Ted Heck, Sam Nepsa, Jeff Coleman, Ed Simpson, Kent Myers, Steve Fisher
- ROW 2—Greg Wasseem, Russ Atkinson, Steve Gibbs, John Senhauser, Rick Hodder, Doug Coutts, George Bliss
- ROW 1—Dave Harrison, Rick Kennedy, Dan Trepin, Terry Smith, Jerry Heidenreich

Tri-Hi-Y Sponsors

JUNIORS

- ROW 3—Jean Ann Gartrell, Marthasue Kidd, Jennifer Jones, Cheri Shultz, Mary Lee Warner, Debbie Phillips, Ellen Seabrook, Sue Noble
 ROW 2—Pam Day, Delores Frenzel, Marcia Painter, Ruth Ann Fulmer, Barbara Eichel, Ethylen Eichel, Carolyn Campo
 ROW 1—Susie Gardner, Davetta Rapport, Pam Beaber, Elaine Swinderman, Jo Ann Debevec



SOPHOMORES

- ROW 4—Ivajane Englehart, Karen Beitzel, Diane Brick, Diane Thomas, Mary Richards, Linda Corder, Cinda Godfrey, Terri Lang
 ROW 3—Lillian Everett, Lynn Tschudy, Sandra Stewart, Susan Gintz, Susan Fleming, Susan Erwin, Cheri Burson, Cathy Ross, Dawn Hicks
 ROW 2—Sheryl Wasseem, Debby Kunze, Linda McKerrihan, Becky Engleman, Carol Burson, Jane Shaffer, Sue Wherley, Judy Kron
 ROW 1—Beth Grimm, Dianne Snyder, Sharon Rapport, Paula Heaton, Delores Snyder

Sweater Hop"



SENIORS

ROW 3—Mary Ann Stempfley, Becky Niuman, Melinde Gibbs, Mary Harding, Ellen Rich, Sharon Taylor, Mrs. Peters
 ROW 2—Patsy Haakinson, Susan Taylor, Judy Massarelli, Rebecca Stocksdale, Marge Tolbert, JoAnn Rausch, Carol Miller
 ROW 1—Elaine Kaserman, Linda Shaffer, Sherryl Barns, Lynn Marsh, Betty Libertore

OFFICERS

Elaine Kaserman	Secretary
Carol Miller	Treasurer
Mrs. Peters	Advisor
Becky Niuman	President
Jean Ann Gartrell	Chaplain



The Tri-Hi-Y is a religious organization of girls from the towns of Dover and New Philadelphia. The girls shown here represent New Philadelphia.

This year the club sponsored the annual Sweater Hop and the Spring Formal. They also operated a booth at the Halloween parade. At Christmas, money was given to the County Welfare Department for needy families.

In the spring, a joint meeting of this club and the Hi-Y club was held and a senior farewell was given at Padula's.

The Sweater Hop of 1962





OFFICERS

Davetta Rapport	Assistant Treasurer
Darla Johnson	Vice-President
Sharon Landes	President
Diana Ladrach	Secretary
Marge Tolbert	Treasurer

Y-Teens boast 69 members . . .

This club is a student organization of the Ohio District Young Women's Christian Association. Its members grow as persons uniting in fellowship with people of all races, religions and nationalities through which they gain the knowledge of God.



SOPHOMORES

- ROW 4—Jill Frownfelter, Linda Meek, Becky Lyons, Jill Shauver, Diane Brick, Bonnie West, Eileen Burke, Cathy Goulder, Cinda Godfrey, Shirley Taylor, Carol Burcher, Sharon Palmer
- ROW 3—Karla Steiner, Kathy Gleitsman, Peggy Rufenacht, Becky Korn, Gail Morgan, Karen Palmer, Chris Haupt, Sue Gintz, Iva Jane Englehart, Dawn Hicks, Lynn Tschundy
- ROW 2—Judy Hinig, Jane Montero, Barbara Mushrush, Elizabeth Fawcett, Susie Wherley, Susanne Erwin, Sue Fleming, Bertha Westhafer, Sandy Page
- ROW 1—Rita Edmond, Judi Gribble, Dianne Snyder, Sharon Rapport, Carol Gribble, Barbara Tatliak



ROW 5—George Santee, Steve Stephan, Jim Amick, Mike Detorio, Dave Shaffer, Jim Creal, Dave Fawcett, Dwight Boor, Jim Tilkey, Gary Fisher, Max Lahmers, Mr. Light
 ROW 4—Dana Baker, Dave Walton, Arthur Siber, Leland Echelberry, John Smith, Dick Huff, LeRoy Cope, Rich McConnell, Rich Meek, Terry Wade, Ben Lawrence, Rick Waltz
 ROW 3—Jeff Marshall, Sam Dessecker, Dale Dindo, Bill Byers, Bill Murphy, Dan Caldwell, Steve White, Chuck Sullivan, Jim Mangon
 ROW 2—John Johnson, Bob Eckert, Fred Parris, Jim Niscinger, Rick Moffitt, Jim Mason, Rick Fox, Glen Medley, Gary Snyder, George Martin
 ROW 1—Rich Walton, Rick Linard, Glen Beaber, Larry Roth, Dave Dessecker, Dale Fincher, John Maistrelli, Louis Martinelli

The Vocational Industrial Club, a state-wide organization, is made up of Vocational Machine Shop and Vocational Auto Shop students. This club provides opportunities for its members to develop leadership in social and educational projects and promotes the standards of workmanship.

OFFICERS

Mr. Light, standing	Advisor
George Santee	Reporter
Bill Murphy	President
Dale Fincher, sitting	Vice-President
Benny Lawrence	Sergeant-at-Arms
Jim Tilky	Treasurer
LeRoy Cope	Secretary



V. I. C. Seniors' bonfire for the "Beat Dover Rally."





ROW 5—Sue Espenschied, Mary Harding, Dianne Lawrence, Kay Bober, Debbie Phillips, Pat Korn, Faye Polka, Miss Moffit
 ROW 4—Sandra Knapp, Reby Stocksdaie, Mary Ann Stempfly, Judy Massarelli, Carol Miller, Rosemary Turrin, Melinda Gibbs, Becky Mercer
 ROW 3—Doris Welfley, Maurine Henninger, Diana Ladrach, Charold Morris, Marge Tolbert, Jo Ann Rausch, Pam Crawley, Joanne Creager, Peggy Mackey
 ROW 2—Linda Shaffer, Sandy Bair, Pat Haakinson, Judy DeMattio, Mèrrie Ellen VanSickle, Carol Ball, Susan Taylor, Jo Ann Debevec
 ROW 1—Lynn Marsh, Ruth Ann Fulmer, Sherryl Barnes, Bonnie Maple, Peggy Scott

The Future Nurses Club enables girls interested in nursing or another medical field to become acquainted with the techniques and requirements involved in a medical career.

The members of the club observed actual work in the hospitals through field trips. Some members gained experience through volunteering their services as candy strippers at Union Hospital.

OFFICERS

Sitting—Jo Ann Rausch Secretary
 Jo Ann Debevec Correspondence
 Sandy Bair Treasurer
 Miss Moffit Advisor
 Standing—Maurine Henninger .. V-Pres.
 Pat Haakinson

Pat Haakinson examines a students eyes.





Sharon Landes prepares as a teacher by teaching an English class.

F. T. A. Members

prepare to teach . . .

The Future Teachers Association enables its members to receive a better understanding of the requirements it takes to become a teacher. By observing the teaching methods and discipline in various grade schools, members gained first-hand information about teaching. The students also substituted for grade and high school teachers when it was necessary.

At monthly meetings the members of the club heard various speakers about the teaching profession and films were shown which were followed by interesting discussions.

It was made possible this year for members to purchase a club pin. A picnic in the fall and a dinner in the spring were the main social activities of the club.

- ROW 5—John Burtcher, Dale Denham, John, Russell, Rick Maurer, Garry Shores, Jack Hurst, Bill Tufford, Bob Hixon, Ed Bean, Jac Cargnel, Bob Stein
- ROW 4—Marge Tolbert, Mary Ann Stempfily, Carol Mutti, Jo Ann Rausch, Nancy Angel, Judy Massarelli, Mary Harding, Reby Stocksdaile, Becky Numan, Beverly Haver, Andrea Rummell, Cheri Schultz, Carol Graham, Linda Urfer, Debbie Phillips, Sharon Taylor, Carol Miller, Carol Conconi, Ellen Rich, Melinda Gibbs, Darla Johnson
- ROW 3—Charold Morris, Delores Frenzel, Susie Hoffman, Diana Ladrach, Ethelyn Eichel, Donna Campbell, Linda Doidge, Pam Day, Becky Smith, Jackie Lorenz, Sharon Landes, Patsy DeMichael, Jean Gartrell, Barbara Eichel, Jennifer Jones, Pam Crawley, Linda Meese, Mary Warner, Sue Espenschied
- ROW 2—Miss Reiser, Becky Young, Chris Schwark, Jeanne Ballentine, Pam Beaber, Sue Hardesty, Sunday Murphy, Bobbie Burns, Jean Cardani, Lynn Rutledge, Angela Nichols, Carol Ball, Elaine Swinderman, Sally Hency, Sandy Bair, Pat Haakinson, Jean Lewis, Ruth Ann Fulmer, Cheryl Swaldo, Jo Ann Debevec, Cheryl Atkinson, Barbara Williams, Jackie Polen
- ROW 1—Sue McMasters, Merrie VanSickle, Carol Kinsey, Elaine Kaserman, Mary Patterson, Barbara Foutz, Peggy Scott, Davetta Rapport, Sue Gardner, Sherryl Barnes, Bonnie Maple Lynn Marsh, Sue Halter, Karen Sanders, Shirley Walker, Sue Taylor, Marcia Painter





The members of the French club, this year, wrote to pen pals in France. Letters were written in English and French to help the members know and understand the people of France.

For the first time this year, the club was able to order pins with the French Club emblem on them.

OFFICERS

Mr. Funk, standing Advisor
 Sitting—Tom Parsons President
 Jane Shaffer Treasurer
 Judi Gribble Secretary
 Terri Lang Vice-President



- ROW 4—Dave Kutscher, Rick Kennedy, Bill Mote, Russ Atkinson, George Bliss, Terry Hewitt, Tom Parsons, Rick Maurer, Dan Johnson, Don Avon, Mr. Funk
- ROW 3—Mary Angel, Jane Sankey, Cheryl Dean, Terri Lang, Linda Corder, Cheri Schultz, Sandra Knapp, Cheryl Atkinson, Faye Polka, Suzanne Marvin, Sue McMasters
- ROW 2—Davetta Rapport, Susie Gardner, Judy Hinig, Cheryl Fahner, Jane Shaffer, Judy Koon, Bertha Westhafer, Linda Swegheimer, Marsha Ricker
- ROW 1—Gloria Richards, Judi Gribble, Diana Snyder, Dianne Edie, Jane Fontana



ROW 4—Alan Sickafoose, Barry Jackson, Don Owens, Tom Corwin, John Burtcher, Jim May, Keith Calhoun, Rich Frantz, Bill Shook, John Strazisar, Steve Reese, Jim Ramsey
 ROW 3—Carolyn Campo, Jo Ann Beaber, Connie Anderson, Diane Telk, Virginia Clymans, Sharon Dennis, Karen Page, Brenda Smallwood, Mrs. Taylor
 ROW 2—Jackie Taylor, Deanna Belden, Becky Engleman, Diana Ladrach, Sandra Page, Vondalene Bear, Diana Thomas, Carol Bucher, Linda Kern, Joette Burtcher
 ROW 1—Sharon Rapport, Jane Montero, Angela Nichols, Peggy Mackey, Elizabeth Snyder, Sharon Menapace, Carol Kies

A hayride and wiener roast started the year's activities for the busy Spanish Club. At Christmas the club members enjoyed a Christmas dinner and gift exchange at the "Chicken Manor" in Strasburg.

The club meetings included various speakers, who showed movies of the customs of the Spanish-speaking countries. Among these speakers was Senorita Carmen Castro Blanco, a resident of Honduras, Central Amreica.

Members of the club ordered pins, rings, and bracelet charms with the club insignia.

In the spring, a dinner and program was held at the Hotel Reeves where gifts were presented to the senior members.



OFFICERS

Standing—Connie Anderson	Asst' Secretary
Mrs. Taylor	Advisor
Diane Thomas	Asst' Treasurer
Sitting—Diane Telk	President
Becky Engleman	Vice-President
Elizabeth Snyder	Secretary
Sandy Page	Treasurer

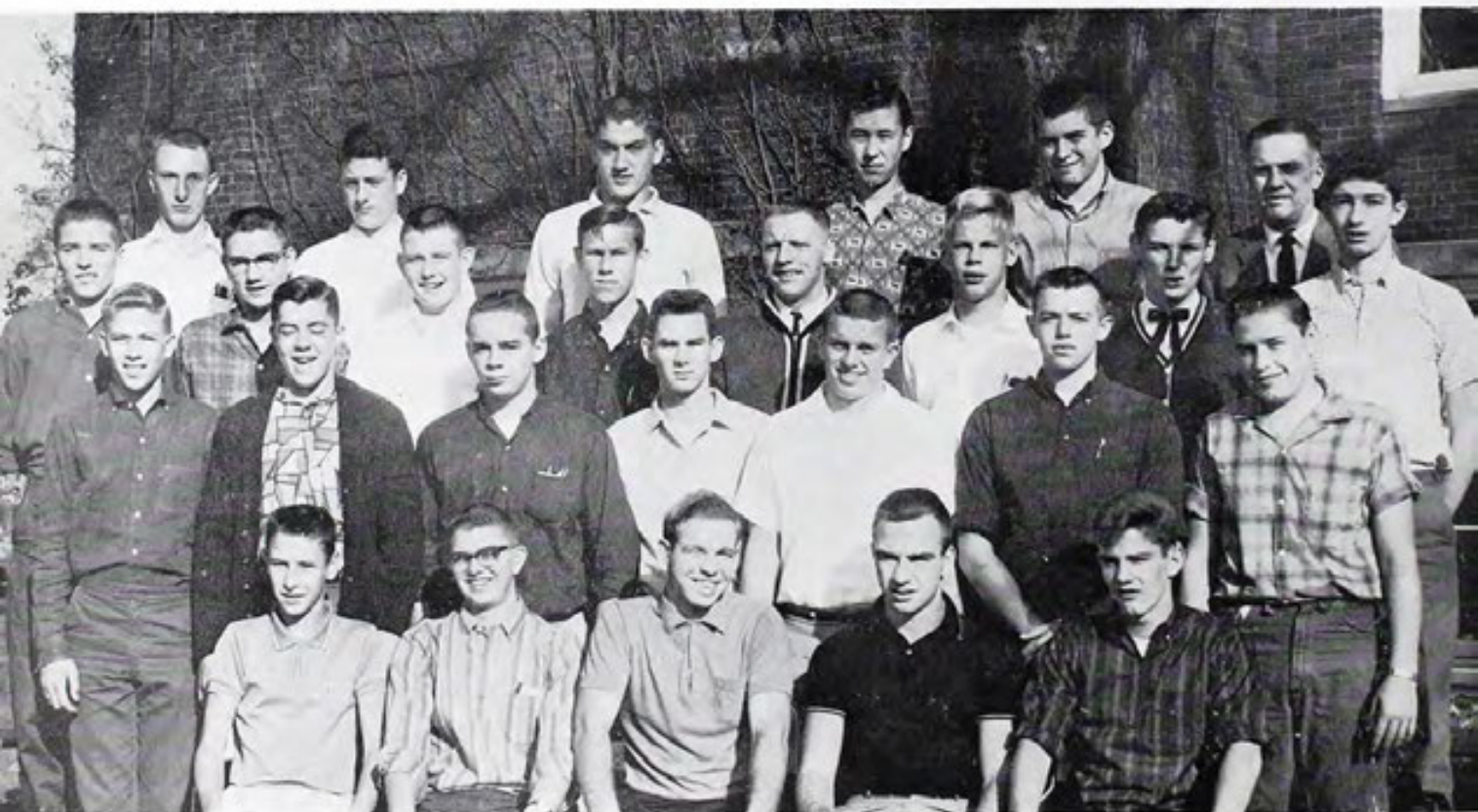


New equipment aids Audio Visual Club . . .

Two new movie projectors, four projection stands and one film strip machine was purchased this year to make the Audio Visual members' jobs easier.

This group of boys, with their advisor, are responsible for the running of all movies in the high school. These members not only learn what to do, but they each receive a chance to use their knowledge in classrooms.

Bob Mizer threadss one of the new "Victor" projectors.



ROW 4—Bob McMillan, Rick Ellis, Dan Mamula, Jack Evans, Dale Denham, Mr. Phillips

ROW 3—Lael Nussbaum, Ted Heck, John MacEachen, Jeff Coleman, Bob Hixen, John Senhauser, John Butcher, Tom Smith

ROW 2—Jody Millard, Ralph Lawrence, Bob Mizer, Pete Alpeter, Bob Mathias, Dave Ladrach, Steve Halchuck

ROW 1—Rick Kennedy, John Russell, Jerry Mercer, Dan Metzger



This way
please . . .

The Senior Class Play, Baccalureate, and Commencement services were the main events for the Auditorium Ushers this year.

The ushers issued programs, took tickets and seated the audience making the public feel welcome to our school.

SENIORS

Standing—Mary Harding, Sharon Taylor, Melinda Gibbs
Sitting—Susan Taylor, Karen, Sanders



JUNIORS

Standing—Jeanne Balentine, Ethelyn Eichel, Faye Polka
Sitting—Marsha Ricker, Patty Wardell

SOPHOMORES

Karen Beitzel, Dawn Hicks, Cheryl Tigard, Dede Thomas, Sharlene Edwards





OFFICE PERSONELL

ROW 3—Mrs. Keener, Carol Bureker, Diane Thomas,
Rosemary Turner, Merrie VanSickle
ROW 2—Paula Heaton, Sue Whereley, Diane Snyder, Sheryl
Wassem
ROW 1—Ethelyn Eichel, Pam Crawley, Jane Montero

Their jobs are
books and
files

The office girls and library staff help to file and sort the many routine assignments which come into the office and the library each day.

If it were not for these students many of the records and books taken for granted around NPHS would not be in their specified places.



LIBRARY STAFF

ROW 3—Linda Van Dyke, Karen Page, Carol Miller, Jackie Polen, Mike Pierce, Angela
Fischio, Karen Bear, Mrs. Gibbs
ROW 2—Delores Frenzel, Cheryl Morris, Sharon Menepace, Rena Taylor, Sandy Stover,
Joyce Clymans, Becky Korns
ROW 1—Gloria Richards, Susan Rummell, Cheryl Fanner, Diane Eddie, Gloria Duper



ROW 1— David Kutcher, Cheri Shultz, Cheryl Atkinson, Charles Shamgarger,
Advisor: Mr. Russell

ROW 2—Doris Welfly, Jo Anne Creager, Allen Sickafosse, Anne Galbraith, Kenny Hill

Theory and operation taught to Radio Club

The qualifications for the Radio Club consist of passing a code test in sending and receiving International Morse Code at the rate of five words per minute and a written examination on the elementary aspects of amateur regulations and radio theory.

In the winter the club strived to get all members qualified for a Novice License. When a sufficient number of members qualified as "Novices", equipment was purchased to establish a station and qualified members began broadcasting.



DEBATE TEAM

Standing—Cheryl Atkinson, Lars King, Mr. Peacock, Diana Ladrach

Sitting—Gloria Richards, Nancy Hoffman, Davetta Rapport

The Speech Activities Group, a member of the Ohio High School Speech League, consists of the Debate Team, Dramatics Groups and the Individual Speaking Events Group.

This group sponsored exchange assembly programs with the Dover and the Uhrichsville Thespian Troups. The club also sponsored the school Christmas Dance the "Snowflake Frolic."

In February the Debate Team met with other schools debating in the District Speech Tournament.

The Dramatics Groups prepared two one-act plays which were used as the exchange program with Dover and Uhrichsville and given for the public. The Senior members of this group assisted with the production of the Senior Class Play.



MAKE UP !! Tom Farbizo gets "made up" for Sr. Class Play.



ROW 4—Pam Crawley, Doris McMurray, Cheryl Atkinson, Jackie Lorenz, Ellen Rich, Milton Wheeler, Sharon Taylor, Jeff Arnold, Lars King, Jackie Polen, Cheri Schultz, Becky Niuman, Mr. Pocock
 ROW 3—Jean Ann Gartrell, Nancy Hoffman, Diana Ladrach, Carol Mutti, Rebecca Stocksdaie, Mary Ann Stemply, Judi Swisshelm, Sharon Landes, Marthasue Kidd, Mary Lee Warner, Lynn Rutledge
 ROW 2—Elaine Swinderman, Jane Montero, Carol Gribble, Elizabeth Fawcett, Sue Hoffman, Marcia Painter, Ruth Fullmer, Jean Kay Lewis, Nancy Lorenz, Sharon Palmer, Joyce Fox
 ROW 1—Carol Richards, Becky Crawshaw, Davetta Rapport, Susie Gardner, Shirley Walker, Paula Heaton, Gloria Kinsey

DRAMATICS CLUB

The members of the Individual Speaking Events Group prepared speeches and humorous and dramatic readings to use in competition in the District Speech Tournaments in February.

Dancing, entertainment and refreshments were enjoyed by all at the "Snowflake Frolic."





ROW 4—Brenda Smallwood, Mary Harding, Carol Miller, Diane Manghese, Judy Renicker, Sonya Bellrose, Diana Sloe, Donna Tilkey, Virginia Clymans, Carolyn Campo, Jackie Taylor

ROW 3—Diane Lawrence, Nancy Angel, Ellen Seabrook, Jennifer Jones, Pat Korn, Carol Weber, Christine Abel, Patsy DeMichle, Carol Graham, Mrs. Williams

ROW 2—Ruth Ann Gerden, Jo Ann Debevec, Carol Strimbu, Connie Dye, Patty Wardell, Becky Young, Susan Bean, Linda Withers, Ruth Ann Fulner, Ethylene Ann Eichel

ROW 1—Elaine Kaserman, Sheryl Barnes, Darla Johnson, Gloria Duper, Sandy Widows, Pam Beaber, Pat Maurer

Business essentials are practiced by the young bussiness leaders

The Young Business Leaders Club helps to promote interest in the business world by familiarizing the students with modern progressive business methods and offering opportunities for social contact.

This organization held its meetings every second Thursday of each month, highlighted with guest speakers. The club had a Christmas party and toured Marsh Wall Tile Company. Later in the spring the Senior members were honored by a banquet.

OFFICERS

Mrs. Williams, standing Advisor
Sitting—Nancy Angel Vice-President
Elaine Kaserman Secretary, Treasurer
Darla Johnson President





ROW 3—Steve Fisher, Gary Leatherman, Bernard Archer, Rick Ellis, Mr. Ralston, John Burtcher, John Russel

ROW 2—Kenny Ways, Ralph Wemple, Jim Harmon, Pat Ashbaugh, John MacEachen, Chuck Newell

ROW 1—Jeff Ecklund, Bob Walters, Dan Gopp, Gerald Spring

1000 Trees Planted by Forestry Club

The main project of the Forestry Club, this year was the planting of 1000 trees in the spring in the school forest area.

This club was organized for boys interested in learning the essentials of tree farming. They learn how to plant, grow and harvest various kinds of trees.



SENIORS

- ROW 4—Mary Harding, Nancy Angel, Sharon Taylor, Ellen Rich, Melinda Gibbs, Beverly Haver, Andrea Rummel, Carole Graham, Mrs. Dummermuth
 ROW 3—Becky Numan, Rosemary Turrin, Kay Bober, Carol Miller, Reby Stocksdaile, Mary Ann Stempfly, Joanne Creager, Jo Ann Rausch, Rebecca Smith
 ROW 2—Linda Shaffer, Carol Ball, Merrie VanSickle, Darla Johnson, Patty Haakinson, Sandy Bair, Judy Massarelli, Marge Tolbert, Jo Ann Burch, Shirley Fish
 ROW 1—Elaine Kaserman, Sue Halter, Sheryl Barnes, Bonnie Maple, Lynn Marsh, Susan Taylor, Sandy Sims

The Pep Club cheers



SOPHOMORES

- ROW 4—Diane Brick, Ivajane Englehart, Dawn Hicks, Susan Gintz, Sandy Fenton, Linda McKerrihan, Judy Kron, Linda Corder, Cinda Godfrey, Shirley Taylor, Cheryl Dean, Nancy Hoffman, Terri Lang, Cathy Goulder
 ROW 3—Kay O'Donnell, Gale Morgan, Judy Schlafly, Karen Beitzel, Diane Thomas, Carol Burcher, Karen Sowers, Cheryl Burson, Ruth Ann Gintz, Eileen Walters, Jill Frownfelter, Sherryl Tygard, Susan Erwin, Jill Showver
 ROW 2—Jane Montero, Karla Steiner, Lillian Everett, Mary Angel, Carol Burson, Sue Wherley, Carla Long, Becky Engleman, Chris Hauptert, Lyan Tschundy, Sandra Stewart, Susie Fowcett
 ROW 1—Rita Edman, Marian Sinkovich, Judy Gribble, Beth Grimm, Dianne Snyder, Sharon Rapport, Sharline Edwards, Sheryl Wassem, Barbara Mushrush



JUNIORS

- ROW 4—Susie Gardner, Charold Morris, Doris Welfley, Barbara Eichel, Cheryl Atkinson Cheri Schlutz, Jean Lewis, Susie Hoffman, Jeanne Cardani, Sue Noble
- ROW 3—Dianne Ladrach, Judy Swisshelm, Carol Srimbu, Donna Campbell, Ruth Ann Fulmer, Ethylen Eichel, Pam Day, Susan Hardesty, Ellen Ann Seabrook, Debbie Phillips, Cheryl Swaldo
- ROW 2—Deloras Frenzel, Barbara Schlafly, Angela Nichols, Lynn Rutledge, Mary Lee Warner, Bobbie Burns, Jean Ann Gartrell, Pam Crawley, Marthasue Kidd
- ROW 1—Mary Ann Patterson, Davetta Rapport, Judi Bahler, Elaine Swinderman, Pam Beaver, Marcia Painter, Marilyn Breehl

They learned all the cheers for the year, took part in pep rallies, and were responsible for the flashy posters in the halls.

For the annual Dover-Phila. football game, members of the club participated in a card and flash section.

OFFICERS

- | | |
|-----------------------|----------------|
| Sandy Bair | Secretary |
| Joanne Creager | Treasurer |
| Mrs. Dummermuth | Advisor |
| Ellen Rich | Vice-President |
| Reby Stocksdale | President |





BACK TO FRONT—Joe Campbell, Milton Wheeler, Angela Fischio, Barbara Calhoun, Sandra Stuver, Linda Van Dyke, Marian Sinkovich, Jim Davis, Gloria Richards, Advisor Mr. Light

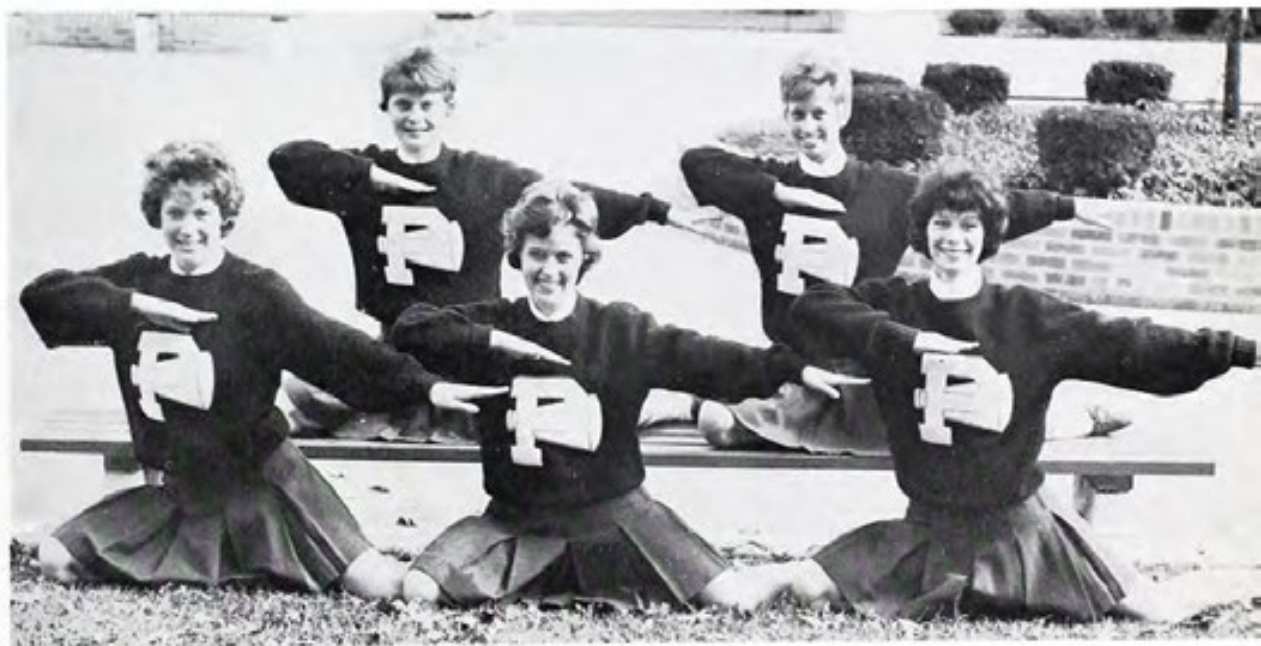
Stadium Ushers work during football season

These students volunteering their services to usher fans to their seats at all the home football games



Come rain or shine, victory or defeat . . .

the cheerleaders can be seen leading the cheering section. They are always boosting the morale of the team and the students, and promoting school spirit with their pep rallies and lively cheers.



Jean Ann Gartrell
Becky Niuman

Betty Libertore

Marthasue Kidd
Mary Ann Stempfly



Susie Gardner
Jean Kay Lewis
Judi Gribble
Susie Wherley
Elaine Swinderman



ROW 3—Mr. Zimmerman, Junior May, Phyllis Peoples, Linda Dummermuth, Terry Smith, John Glazer, Charles Shambarger, Rick Maurer, Lael Nussbaum, Byron Polen, Rick Ellis, Ted Heck, Jim Harmon, Jeff Arnold, Carol Bucher, Sharon Ecklund, Gerald Spring, Dave Harrison, Gloria Duper, Barbara Mushrush

ROW 2—Carol Kies, Barb Foutz, Candy Robinson, Becky Young, Pricilla Scarini, Kathy Goulder, Jackie Lorenz, Sandra Knapp, Coleen McMillan, Sam Nepesa, Duane Belknap, Fred Kaserman, Sonja Bellrose, Bill Mizer, Lou Winston, Janet Border, Linda Kern, Virginia Clymans, Kaye O'Donnell, Libby Wilson

ROW 1—Marsha Ricker, Karen Sanders, Lynn Tschudy, Suzanne Marvin, Joette Burtcher, Karen Thomas, George Bliss, Jack Evans, Mike Beitzel, Diane Sloe, Al Specht, Gene Amick, Sharon Miller, Karen Beitzel, Shirley Burkhart, Linda Withers, Cheryl Weber

BOTTOM—Jim Swisher, Jack Everett, Rick Everett, Dave Katscher, Jim Hartsock



Presenting
the N. P. H. S.



Mike Davis, Mr. Zimmerman, Gloria Kinsey

The members of the Senior Marching Band started practice in August. They organized the show of the week after school each evening, giving their time and efforts for an excellent, enjoyable half-time performance.

This year the band, for the first time, went to Kent State University for the annual band day representing one of the twenty-one schools participating. The band had the honor to perform at half-time.

The members of the band held a candy selling drive to earn money to help pay for their yearly expenses.

After football season, the marching band became the Senior Concert Band. In January the band played one evening at the Little Theater's production of "Music Man" and participated in the annual Patron's Concert in the spring.

Dr-u-u-u-ms Cadence!

Marching Band . . .





Quaker Girl; Shirley Walker, Shirley Taylor, Cinda Godfrey, Sunday Murphy, Phillis Yosick, Head Majorette; Gloria Kinsey, Sally Hency

Drum Majors and Majorettes lead the band

These girls spent many hours during the summer planning dances and baton routines for the football games.

The majorettes this year marched with the band to the stadium and in the Veterans and Memorial Day parades. They participated in pep rallies, the Dover-Philly Snake Dance and twirled fire batons during the Dover-Philly half-time show.

John Davis — Mike Davis

Mike Davis, this year's head drum major and his assistant, John Davis, led the band in the parades and during half-time shows. Both displayed excellent jobs of leadership.





"Two Bass Hit"



Student Directors: Suzanne Marvin, Fred Kaserman, Mike Davis; Mr. Polce, Director

The "Snowflake Frolic," P.T.A. programs and exchange and school assemblies were the main activities of the Stage Dance Band this year.

This band consists of thirty talented students, who do a fine job and also gain valuable experience. Many of these students, hope to make music their career.



ROW 4—Sam Nepsa, Jan Fait, Tom Dindo, Mike Beitzel, Bob Hixon

ROW 3—George Bliss, Al Specht, Fred Kaserman, Rick Maurer, Mike Davis, Jeff Coleman, Earl Menges, Larry Angel, Mr. Polce

ROW 2—Suzanne Marvin, Mary Richards, Doris Welfley, Janet Border, Coleen McMillan, Sharon Miller, John Davis, Gene Amick, Bill Ayers

ROW 1—Joette Burtcher, Marsha Ricker, Patty Wardell, Dave Kutscher, Lynn Tschudy, Cheryl Weber



ROW 3—Donna Campbell, Jeff Arnold, George Bliss, Jack Evans, Rick Maurer, Larry Angel, Jan Fait, Terry Smith, Shirley Burkhart, Libby Withers, Mr. Zimmerman, Mike Davis, Jim Swisher, Dave Kutscher, Jeff Coleman, Tom Dindo, Judy Bahler

ROW 2—Sandy Page, Esther Riggle, Janet Border, Fred Kaserman, Barbara Foutz, Marge Tolbert, Kathy Golder, Priscilla Sciarini, Jackie Lorenz, Suzanne Marvin, Marsha Ricker, Sharon Miller, Cheryl Weber

ROW 1—Ann Galbraith, Peggy Scott, Bob McMillan, Jane Shaffer, Joette Burtcher, Sue Swihart, Grace Simmers, Debbie Phillips, Maurine Henninger

MR. ZIMMERMAN DIRECT

The Senior Orchestra, under the direction of Mr. Zimmerman, is a talented music organization.

The orchestra participated in school assembly programs, the annual Patron's Concert and the Senior Class Play. They also provided music for Baccalaureate and Commencement exercises in June.



Jack Evans ??

SENIOR ORCHESTRA





The combined Junior and Senior choirs were privileged to attend the annual choir work shop, which was held in the Canton-McKinley High School this year. Dr. Harry Wilson, a famed choir director in the United States, directed the massed choir including Wooster, Dover, Canton South, and Canton McKinley as well as our own choir. Dr. Wilson also gave written comments on each individual choir presentation.

The choir fulfilled a busy schedule this year under the expert direction of Mr. Bliss. The Elk's memorial service and Thanksgiving and Christmas assemblies highlighted the main activities of the choir.

Plans were made for exchange assembly programs with the Garaway and Coshocton Choirs. The choir also sang at the Patron's Concert and held a parent's night program, completing a very successful and enjoyable year.

CHOIRS GO



JUNIOR CHOIR

- ROW 5—Mr. Bliss, Dave Belknap, Kenny Wayts, Dave Wigfield, John MacBachen, John Senhauser, Mike Limbaugh, Rick Ellis, Rich Hobart, Bob McMillan, Gary Reese, Terry Hewitt, Duane Belknap, George Bliss, Dick Bible
- ROW 4—Jim Stemple, Stanley Myers, Bob Walters, Ed Russel, Cathy Goulder, Esther Riggle, Cinda Godfrey, John Wise, Dan Gopp, Jerry Deardorf, Dave Roll, Mike Cherry, Bob Walters, John Elliot
- ROW 3—Sandy Page, Jane Shaffer, Linda Meek, Linda Dummermuth, Louise App, Terrie Lang, Ruth Gintz, Karen Beitzel, Ruth Schaar, Joette Burtscher, Dianne Brick, Lynn Tschudy
- ROW 2—Barbara Mushrush, Millie Benco, Becky Korn, Dawn Hicks, Cheryl Dean, Sue Fleming, Mary Richards, Candy Hanni, Judy Walton, Becky Crawshaw
- ROW 1—Debbie Kunze, Mary Angel, Karla Steiner, Karen Palmer, Sherryl Tygard, Suzanne Marvin, Cheryl Weber, Rena Taylor, Judi Gribble



SENIOR CHOIR

- ROW 5—Sally Hency, Coleen McMillan, Jeff Arnold, Jack Hurst, Terry Wade Mike Beitzel, Joe Campbell, Larry Angel, Bob Hixon, Helen Huff, Ellen Rich, Carol Conconi, Mr. Bliss
- ROW 4—Virginia Clymans, Sandra Knapp, Bill Mizer, Barry Jackson, David Ladrach, Larry Krauss, Dick Bradley, John Burtcher, Pat Wardell, Donna Campbell, Mary Harding, Sara Bigler
- ROW 3—Jackie Taylor, Pat Haakinson, Mike Erwin, Fred Kaserman, Bob Dummermuth, Jane Fontana, Jean Gartrell, Diana Ladrach, Sue Noble
- ROW 2—Nancy Angel, Judy Renicker, Doris Welfley, Judy Bahler, Jim Swisher, Junior May, Alan Shull, Marthasue Kidd, Judy Massarelli, Jeannie Ballentine
- ROW 1—Gloria Kinsey, Edna Mutti, Karen Sanders, Cheryl Swaldo, Jean Cardani Sandy Bair Peggy Scott, Ruth Fulmer, Pam Beaber, Shirley Walker, Betty Libertore

D WORKSHOP

It takes more than one to make a choir.





ATHLETICS





ROW 4—Manager Mark Watson, Don Avon, Stan Myers, Larry Bente, Tom Milligan, Larry Denmen, Doug Russell, Bill Shook, Jeff Coleman, Vic Walters, Manager Steve Eckert, Manager Lars Kink, Faculty manager John Zion, Coach Dunn

ROW 3—Bob Burnworth, Bob McCulloch, David Ladrack, Tim Llewellyn, Jon Clay, Tom Raff, Joe Moesta, Bob McMillan, Steve Arnold, Rick Linard, Doug Coutts, Dale Waltz Rich Hodder, Dan Gibbs

ROW 2—Ralph Lawrence, Bill Swartz, Bob Mathias, Stan Tate, Steve Reese, Bill Richesson, Jim May, Joe Vaughn, Jeff Marshal, Mark Francis, Bob Smith, Larry Fisher, Coach Fryman

ROW 1—Eric Gribble, Dan Mamula, Tom Farbizo, Cuyler Trachsel, Dan Johnston, Bob Hixon, Bob Celce, Jac Cargnel, Peach Fragasse, Dale Tate, Terry Keiser, Coach Christopher

VARSITY FOOTBALL

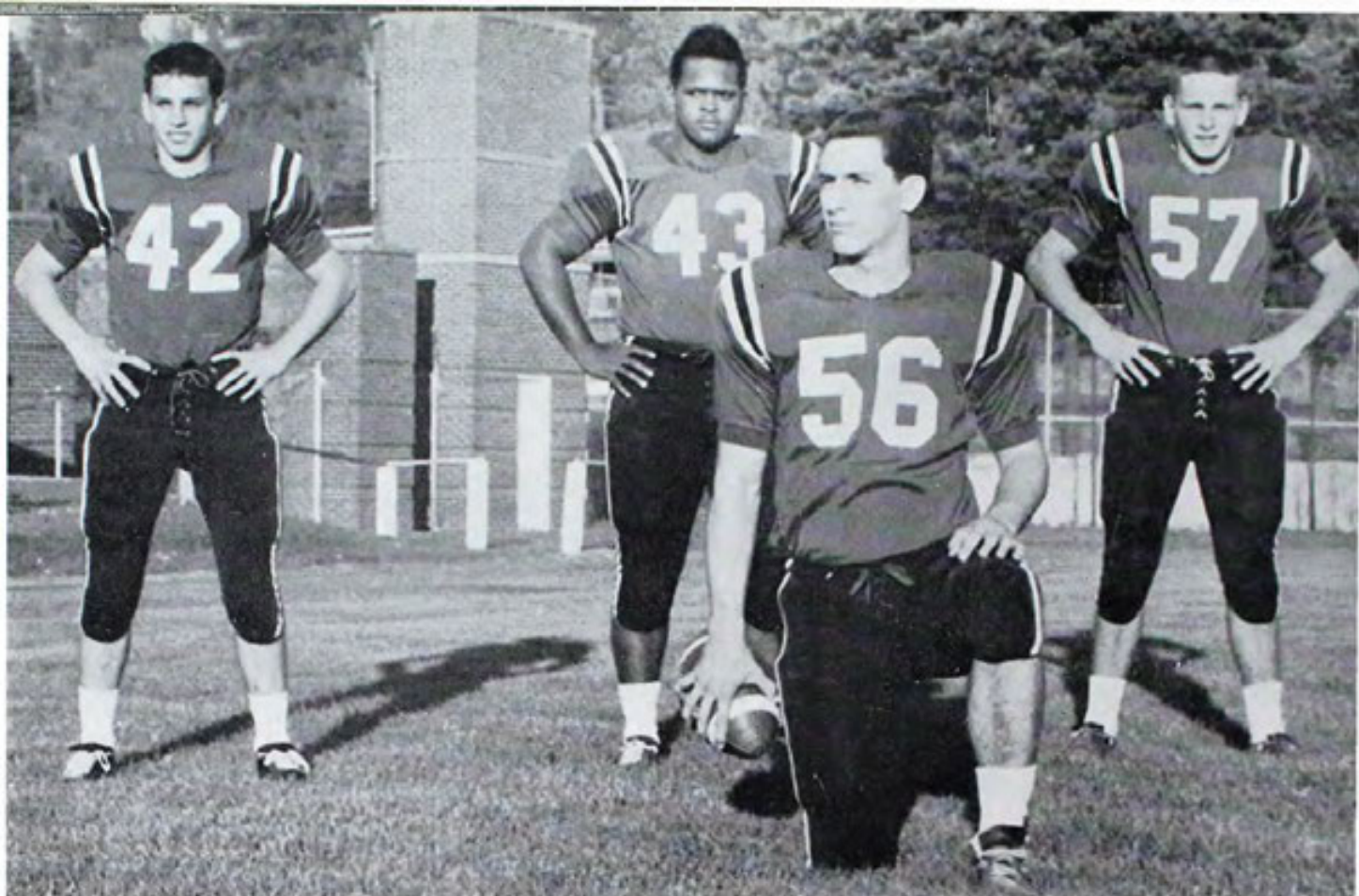
New Phila	0	..	Wooster	26
New Phila	0	Jackson Memorial	..	42
New Phila	6	Martins Ferry	14
New Phila	14	East Liverpool	32
New Phila	40	Wellsville	6
New Phila	14	Ashland	12
New Phila	14	Canton Lincoln	52
New Phila	18	Bellaire	13
Nwe Phila	38	Uhrichsville	14
New Phila	6	Canton Glenwood	..	14
New Phila	0	Dover	6



Coach Christopher, Coach Dunn, Coach Frymen and Tri-Captains Jac Cargnel, Tom Farbizo, Bill Swartz

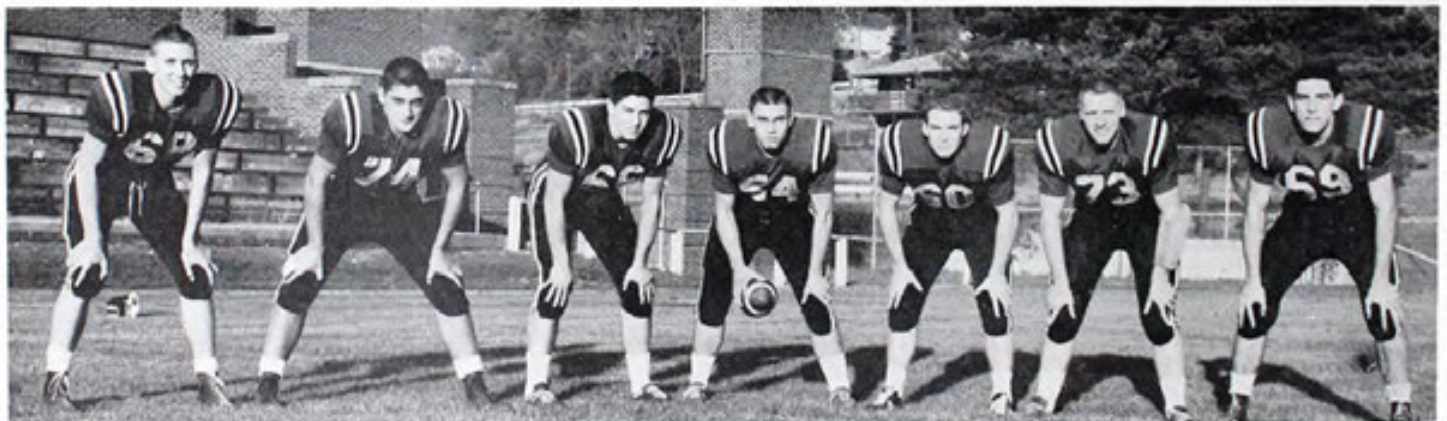
Phils have best year since 1957

All the students and fans of New Philadelphia High School can be very proud of this year's football team. After losing the first four games, the "Fighting Quakers" came back and won four of the next five games. They then lost the last two games of the season, the last one a disappointing 6-0 to the arch-rival Dover. Everyone can be proud of our team for no matter how far behind they were, they never gave up.



LEFT TO RIGHT—Tom Fragasse, Dale Tate, Jac Cargnel, Terry Keiser

FOOTBALL LETTERMEN



LEFT TO RIGHT—Eric Gribble, Dan Mamula, Tom Farbizo, Cuyler Traschel, Dan Johnston, Bob Hixson, Bob Celce



ROW 2—Bob Mathias, Bill Swartz, Mark Francis

ROW 1—Steve Reese, Bob Smith, Jim May, Bob Burnworth, Joe Vaughn



Tom Farbizo, Most Valuable Lineman; Dale Tate, Most Valuable Back; Tom Fragasæ, Most Efficient Tackler; Dan Mamula, Most Improved Player



Bob Celce stops a Bellaire defender from intercepting a pass intended for him.

Phils have best year since 57' . . .

King Football once again gave the fans of the New Phila Quakers much enjoyment. Although the Quakers played in the mud, rain, and sleet several times during the season, the fans stayed with them all the way.

In the same respects, this season was somewhat of a disappointment, but lets not forget that it takes a supreme effort for a team to come back and win the next four out of five games after losing the first four games. One victory was an 18-13 win over the Bellaire "Big Red." Another of the victories was a 38-14 trouncing of the Uhrichsville "Tigers" followed by the 40-6 blasting of Wellsville then the exciting 14-12 win over Ashland.

Bob Mathias and Bob Smith move in back stop a Dover back for no gain.





Bob Hixson helps referee, as he signals, Mark Francis has scored a vital two point conversion

The team this year was the best Quaker team since 1957. Although they averaged 13 points a game, it was the best scoring output since 1957. The team record this season, 4-7, the best since 1957.

Coach Christopher get a free ride from the players after the 40-6 victory over Wellsville.





Terry Keiser moves in as Bob Celce is stopped after a long gainer.

The most victories in the last five years was three. Next year's Quakers will have 15 of this year's lettermen, 8 from the offensive unit and 7 from the defense.



This year's reserve team posted one of the better records in recent years and are expected to help next year's campaign greatly.

Of the 142 points scored this season, only one scorer will not be back next year, Jac Cargnel. The Quakers offense rushed for 1500 yards, again Jac will be the only rusher not returning.



The rugged Quaker defense is set, anticipating the start of a play.



Dale "Poochie" Tate scores again for the Quakers as Jac Cargnel, Tom Fragasse and Eric Gribbl look on.



ROW 4—Rick Linard, Doug Coutts, Tom Dindo, Dale Waltz, Eddie Evans

ROW 3—Bill Richesson, Stan Tate, Bob McMillan, Bob Burnsworth, Tom Milligan, Jeff Marshall, Jeff Coleman, Dan Gibbs

ROW 2—Coach Dunn, Larry Denman, Joe Moesta, Dave Ladrach, Larry Perkins, Dave Belknap, Ralph Lawrence, Rick Hodder, Dick Wright

ROW 1—Manager Don Avon, Larry Fisher, Stan Myers, Russ Atkinson, Bill Shook, Tim Llewlynn, Vic Walters, Doug Russell

RESERVE FOOTBALL

Coach Al Dunn did an outstanding job in molding this squad into a fine team. These boys worked very hard and deserve much credit.

This year's team had a fairly good year. Many of these boys will make the step up to varsity next fall.

We regret that the scores of this years reserve games have been lost. These scores would have proven that the "Little Quakers" were a mighty team.



REAR—Al Crane, Eric Gribble, Mike Beitzel, John Eichel, Bob Celce, Bob McCullough,
Jan Fait
FRONT—Rick Linard, Mark Francis, Tom Corwin, Dick Huff, Jac Cargnel

BASKETBALL

New Phila . . .	57	..	Martinsferry . . .	59
New Phila . . .	52	..	Coshocton . . .	49
New Phila . . .	51	..	Canton Lehman . . .	61
New Phila . . .	56	..	Zanesville . . .	79
New Phila . . .	56	..	Cambridge . . .	50
New Phila . . .	39	..	Alliance . . .	26
New Phila . . .	58	..	Dover . . .	63
New Phila . . .	53	..	Uhrichsville . . .	78
New Phila . . .	61	..	Coshocton . . .	63
New Phila . . .	57	..	North Canton . . .	51
New Phila . . .	48	..	Bridgeport . . .	80
New Phila . . .	87	..	East Liverpool . . .	73
New Phila . . .	64	..	Ashland . . .	62
New Phila . . .	54	..	Massillon . . .	66
New Phila . . .	49	..	Uhrichsville . . .	58
New Phila . . .	50	..	Dover . . .	46
New Phila . . .	58	..	Cambridge . . .	46
New Phila . . .	78	..	Carrollton . . .	44

Although the season was started in a slow fashion, our team gained momentum towards the end of its rough schedule.

In the past years the Quakers have relied on one "big gun" but this year a balanced scoring was used.

The team finished the season with a 9-9 record.

Our sincere congratulations go to Coach Benjamin and his boys for a job well done.

Since the graduation of the main point maker and rebounder of 1962, the Quakers could no longer rely on one big man to carry the blunt of the attack.

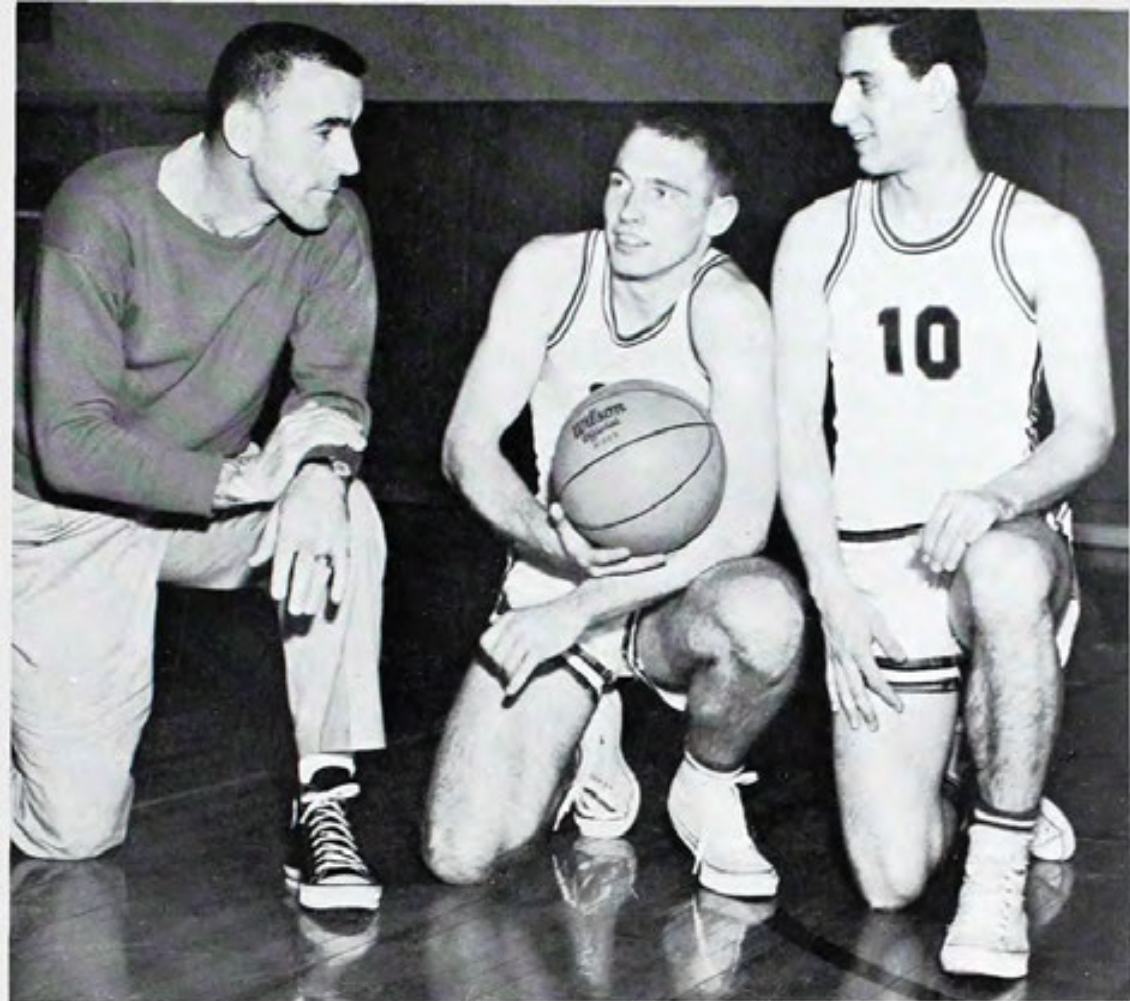


Bob Celce, Bob McCulloch, Jac Cargnel, Mark Francis

BASKETBALL LETTERMEN



Allen Crane, Mike Beitzel, Eric Gribble, John Eichel



Coach Leo Benjamin with Co-Captains John Eichel and Jac Cargnel

John Eichel and Canton Lehman player scramble for a loose ball.

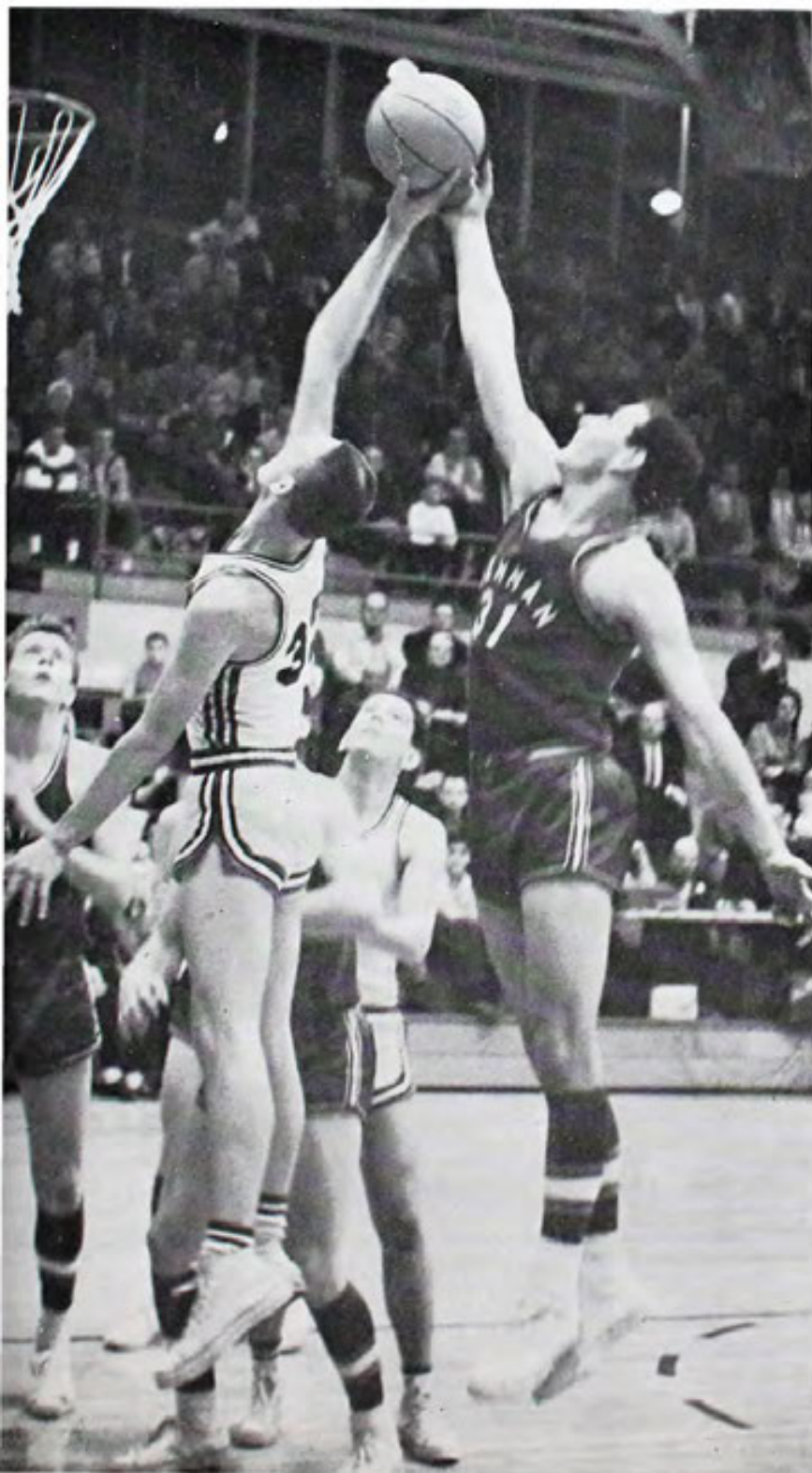




Celce drives and scores!

Perhaps the greatest surprise to Coach Benjamin was the development of Mike Beitzel. Mike, at the beginning of the season, started on the reserve team; however, after scoring 23 points in one game, he was moved to a starting position on the varsity team.

Eric "Goose" Gribble tries to tip in a missed shot.



After this change, the 6' 5" junior developed into an excellent shot and also did a yeoman's job on the boards. Mike, the leading scorer, made 218 points for a fine 12.1 average.

Eric "Goose" Gribble was another boy who developed greatly as each game passed. Eric, who rebounded 21 times in one game, also helped the scoring with 177 points for a 9.8 average.

Junior Bob Celce, who returned from last year's starting squad, was a steady performer all season long. He had a total of 205 points for a good 11.4 average. Bob also was a fine rebounder.

Jac Cargnel, the fine senior playmaker, was perhaps the team's steadyest player. Under pressure Jac was always cool. He was not far back on the scoring parade with a 11.3 average good for 203 points.

The best rebounder on the team was John Eichel. John is only 6' 1" but he could jump with the 6' 4" or with the 6' 5" boys. Just past mid-season, John was switched from forward to guard. It was feared that he could not make the change but he came thru in fine fashion. John averaged 7.5 points a game. John tied for season's high in rebounds with Eric Gribble.

John and Jac have both ended fine careers in the services of New Philadelphia.



Mark Francis starts a fast break as the Quakers clash with arch-rival Dover

Rounding out the "first six" is a "cocky" 5' 8" sophomore, Mark Francis. He is a good back court man who, with more experience, should become a fine ball-player. Mark had a 7.6 average.

A lot of credit goes to these boys and the remaining varsity squad for their hard work.

The four of the first six starters returning will form an excellent nucleus for next year's team.

John Eichel asks a Dover player if he's seen the basketball lately!

SECTIONAL

Uhrichsville
70 - 67

The Quaker victory was a stirring upset for Uhrichsville fans. The boys displayed fine rebounding and ball handling. Mike Beitzel lead the scoring with 19 points.

THREE RIVERS
70 - 58

This game was supposed to be a fairly easy victory for the Quakers. After building up a 28 point lead, the Patriots started hitting and came back; however, the "Benja-men" stopped them and held on to take a 12 point victory. Again Mike Beitzel led the Quakers scoring with 19 points.



COSHOCTON

47 - 46

The Redskins, being one of the two top teams in the sectional tournament, were edged by our fighting Quakers. With a 47-46 victory the Red and Black won their third Sectional Championship within the last five years. With this additional victory, the Quakers advanced to the district plays at New Concord.

DISTRICT

STEUBENVILLE

72 - 80

The Quakers were outclassed from the start of the game by the highly touted Big Red. The Quakers made a game of it all the way by cutting down an early lead of 11 points to 3 at the end of the first half. In the nip 'n tuck affair, in which the Quakers battled back several times but could never take the lead, the Quakers were finally beaten.



Bob Celce made a drive good for two important points.





TOP—Gribble is set to shoot a free throw.

RIGHT—Cargnel drives in for an unusual shot.

A few words from the Coach

Observers at the beginning of our basketball year commented that we were in for a rough year. Of course, I let that go in one ear and out the other. I had a lot of faith in our boys. They worked hard and kept improving. They deserve a lot of credit, especially, having a season of 6 wins 9 losses with only several weeks left. They started to believe in themselves at that time and they thought they could play basketball as well as anyone in their section. They have proved themselves!

I'm happy and grateful to them for coming through as they did. They are as fine a group of basketball players as any we have had.





RESERVE BASKETBALL TEAM

New Phila	40	Dover	54
New Phila	47	Martins Ferry	45
New Phila	39	Coshocton	35
New Phila	33	Canton Lehman	..	32
New Phila	33	Cambridge	34
New Phila	31	Zanesville	54
New Phila	38	Alliance	26
New Phila	30	Dover	41
New Phila	27	Uhrichsville	36
New Phila	30	Coshocton	38
New Phila	29	..	North Canton	35
New Phila	51	East Liverpool	46
New Phila	50	Ashland	23
New Phila	45	Massillon	49
New Phila	23	Uhrichsville	53



ROW 3—Rich Ellis, Ralph Lawrence, Garry Shores, Bob Mathias, Bob Hixon, Rick Hodder, Norm Lanzer, Coach Dick Fryman

ROW 2—Bill Shook, Peach Fragasse, Steve Eckert, Doug Coutts, Joe Vaughn, Doug Russell

ROW 1—Forrest Gano, Terry Smith, Rick Kennedy, Nick Gray, George Johnston, Terry Cook

This season was a good one for the Quakers in many respects. The "Grapplers" had two great victories over Dover. They also made a good showing in the district wrestling meet. Heavyweight Bob Hixon reaped the honor by winning the District Heavyweight Crown. In March Bob went to the state in quest of the state crown but was defeated in the first round.





Bob Hixson was our first wrestling representative in the state tournament. Bob deserves much credit for this fine accomplishment. "Higgie" won a medal for winning the District Heavyweight Crown.

This is typical of some of the action that took place during the Quaker mat season.



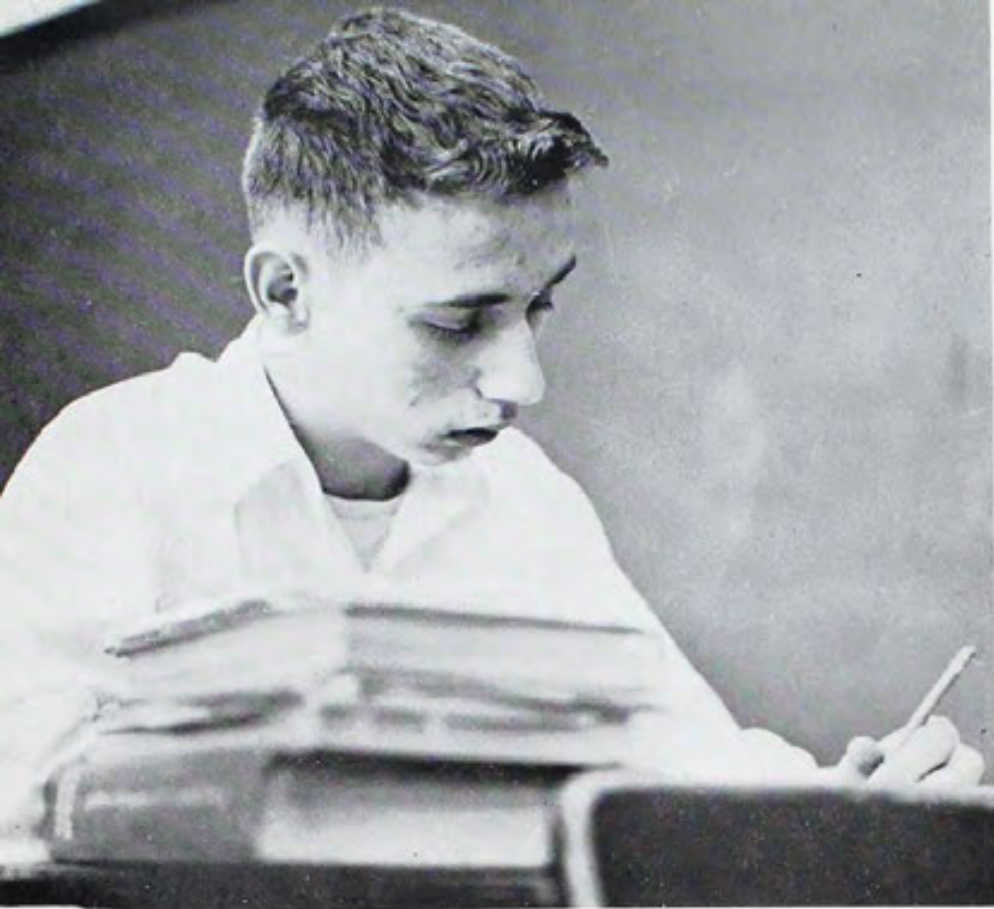


WAKE



W

WORKERS



On September 5, the Senior High Students once again trod the halls of dear Philly High. The "silly sophomores" were so glad to become a part of Senior High that they could hardly wait to get started. The not so "jolly juniors" saw nothing ahead, but a long year of school. While the "Mighty Seniors" had already started the countdown, 185 - 184 - 183 ---.

September 7, was an exciting day for all students. Our football team, the best since '57, played its first game with Wooster. The team deserves a lot of credit for an excellent season. The highlight of the evening was the capping of the 1962 Quaker Girl, Shirley Walker by Nancy Olmstead, Quaker Girl of 1961.

ABOVE—Above all, studies come first.

RIGHT—Phyllis Yosic "Limbos" at sophomore "slop hop".





STANDING—Doris Welfley, Mary Lee Richards, Chris Haupt, Mary Lee Warner
SEATED—Elaine Kaserman, Miss Ellen Rich (Queen), Reby Stocksdales

1962 HOMECOMING QUEEN AND COURT

Lovely, Ellen Rich was crowned Homecoming Queen at the Wellsville football game. Her court was composed of: Seniors, Elaine Kaserman and Rebecca Stocksdales; Juniors: Mary Lee Warner and Doris Welfley; Sophmores: Chris Haupt and Mary Richards. A gala dance was held in our gym in honor of the royalty.

Senior Quarterback Jac Cargnel, chosen by the student body as All-Quaker for the year brought the football season for 1962 to a close.

"Swinging Safari", the theme of the annual Sweater Hop, sponsored by the Tri-Hi-Y, was a fun filled evening with Bill Ridenour of WHLO spinning the platters. The dance floor soon was filled with colorful excitement as couples come wearing matching sweaters. Each couple wore sweaters of different colors, and dazzling styles.

"The Snow Flake Frolic" was an overwhelming success. There was fun, entertainment, dancing and food for all who attended. The following day, December 21, school was closed for the long awaited Christmas vacation.

Classes resumed again, January 2, along with the beginning of the new year of 1963. Fearful students roam-

ed the halls, for the month of January brought semester exams all too quickly, January 24 and 25.

For the choir the end of Januar brought another annual choir work shop at Canton McKinley.

The Speech Activities Club, meanwhile, was rehearsing the two-one act plays which the club presented on February 15, under the direction of it's advisor Mr. Pocock and Miss Diane Mathews, a student teacher from Kent University. The humorous and dramatic plays, "Did you say Mink?" and "Beyond the Door" were very affective and in turn were presented to Dover and Uhrichsville High Schools.

This year only two students received superior ratings in the annual science fair. The fair consisted of many excellent and interesting projects and exhibits.



ABOVE—Mike Davis beats out the old rythem on the drum.

RIGHT—Sue Whereley and Judi Gribble cheer for the reserves.



The Senior Class play, "My Favorite Haunts" was presented on April 5, supervised by Mr. Pocock and student director Sharon Landes. The play was a Three-act drama.

The "WHLO" All-Stars visited our school on February 26. Unfortunately the "All-Stars" were defeated by our superb faculty.

"Music to my Ears" might have been the theme when The Navy Band visited our gym, April 18.



ABOVE—The big two meet before the pep-rally.

BELOW—Exactness is a must when working in the shop. Here "Shaff" "mikes" a shaft.



RIGHT—Biting nails isn't a required subject, but it helps during a civic exam.



The Gym was jam-packed when the show began at 1:15, students from all over the county came to hear the great Navy Band.

Again senior and second semester exams provide to be the challenge to beat now, the Seniors didn't mind

Peck! Peck! goes the typewriter and clang, clang, clang, goes the echo down the halls. . . .



"Did You Say Mink?" Pam Crawley yells to Ellen Rich in play by the same title.

"They danced the night away," by Gary Shores and Sandy Page.

so much, it was their final exam in high school and in six more days they would graduate and have to face the "cold cruel world".

It seems just like yesterday when we started accross the bridge to a new world of life. The Senior High School.



ADVERT



TAKING



PATRONS

Accountants

Richard C. Rea and Associates

Appliances

Foutz Stove and Appliance

Architects

Marr, Knapp and Crawfis

Bakeries and Candies

Everrett's Bakery

Scherer's Sweet Shop

Banks and Loan Agencies

Citizen's National Bank

Ohio Savings and Trust

Batteries and Spark Plugs

(Patterson Corporation Division of)

General Battery and Ceramics

Beauty Salons

Cathy's Beauty Salon

Flora Beauty Shoppe

Shirley's Beauty Shoppe

Building and Supply

Gundy Construction

Glass Lumber and Builder Supply

Union Lumber

Burial Supplies

Click Burial Vaults

Clothing and Shoe Stores

Boston Inc.

Jack and Jill

Marlinn's Shoe Store

Richman's Clothing

Dairies

Palmer's Dari Bar

Goshen Dairy

Department Stores

LaFountain's

Drug Stores

Heller Drug

Dry Cleaners

Bente Dry Cleaning

Puritan Laundry and Dry Cleaning

Electric Sales

Fenton Brother's Electric

Funeral Homes

Evan's Funeral Home

Furniture Cleaners

Charles N. Beringer Furniture Cleaning

Furniture Stores

Linn-Hert Co.

Maurer Furniture

Groceries

F. B. Maurer's Market

Riggle Finer Foods

Hotels and Motels

Haskett's Motel

Reeve's Hotel

Insurance Agencies

Gibson Insurance Agency

Schreiner Insurance Agency

Jazz-Dance Bands

The Staccato's

Jewelers

Baker's Jewelry

Watch Shop

Machine Tools

Buckeye Supply

Paint Supplies

Ladrach's Paint

Photographer

Chris Rice

Physicians

Dr. Crawley M.D.

Publication

The Daily Times

Realtors

Becker Real Estate

Tusco Realty

Restaurants

Bassetti's

Irene's Deli-Con

Service Stations

Cotterman's Service

Packer Inc.

Penn Gas and Oil Co.

Waltz Auto Service

Transportation

Dover-Phila Transit

Truck Sales and Service

T.V. Cables

T.V. Antenna System

Utilities

Ohio Power Company

Welders

Riverview Welding

ACKNOWLEDGMENTS

TO

THE NORTHERN ENGRAVING AND
ELECTROTYPE CO.

Canton, Ohio

THE TUCKER PRINTING CO.

New Philadelphia, Ohio

THE MUELLER ART COVER AND
BINDING CO.

Cleveland, Ohio

RICHARD STROCK PHOTOGRAPHY

New Philadelphia, Ohio

THE TIMKEN ROLLER BEARING CO.

AUTOGRAPHS

To Butch,

To a real swell guy that I really think a lot of. (And love a lot to.) Remember me always as Josephine, as you call me. I hope we go together for a long time, 'cause I don't ever think I could forget you and all the fun we've had together. All the "kuck" in the world, 'cause you'll need it with me around.

I.h.Y. Love ya always,
Cathy

AUTOGRAPHS



The End.....

